

Installation Guide

Swedish Maritime Administration

Security Certificate

- Internet Explorer
- Google Chrome
- MacOS (Safari/Chrome)
- Mozilla Firefox
- Microsoft Edge

Reference

Reference	2
Introduction	3
Installation in Internet Explorer	4
Installation in Google Chrome	17
Installation in MacOS (Safari/Chrome)	28
Installation in Mozilla Firefox.....	35
Installation in Microsoft Edge	43

Introduction

The following instructions describe how to install the Swedish Maritime Administration Security Certificate on your computer.

The web browsers supported by the Swedish Maritime Administration are Microsoft Internet Explorer, Google Chrome, and Safari. Some slight differences might exist between different versions of web browsers, but these differences are of a smaller nature.

If you experience problems or have any questions, please contact the Swedish Maritime Administration's Port Call support:

Phone: +46 (0)10-478 58 00

E-mail: portcall@sjofartsverket.se

Installation in Internet Explorer

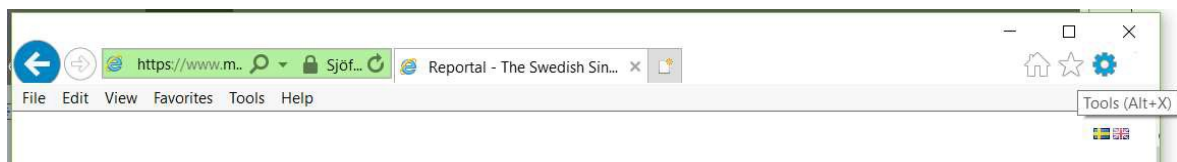
Step1: Perform the following before you start the installation

- Save the certificate <filename.pfx> which you have received from Swedish Maritime Administration by e-mail, to your computer, for example to you desktop.
- Make sure that you have the password for the certificate file, which you have received from Swedish Maritime Administration by Text Message (SMS), available.

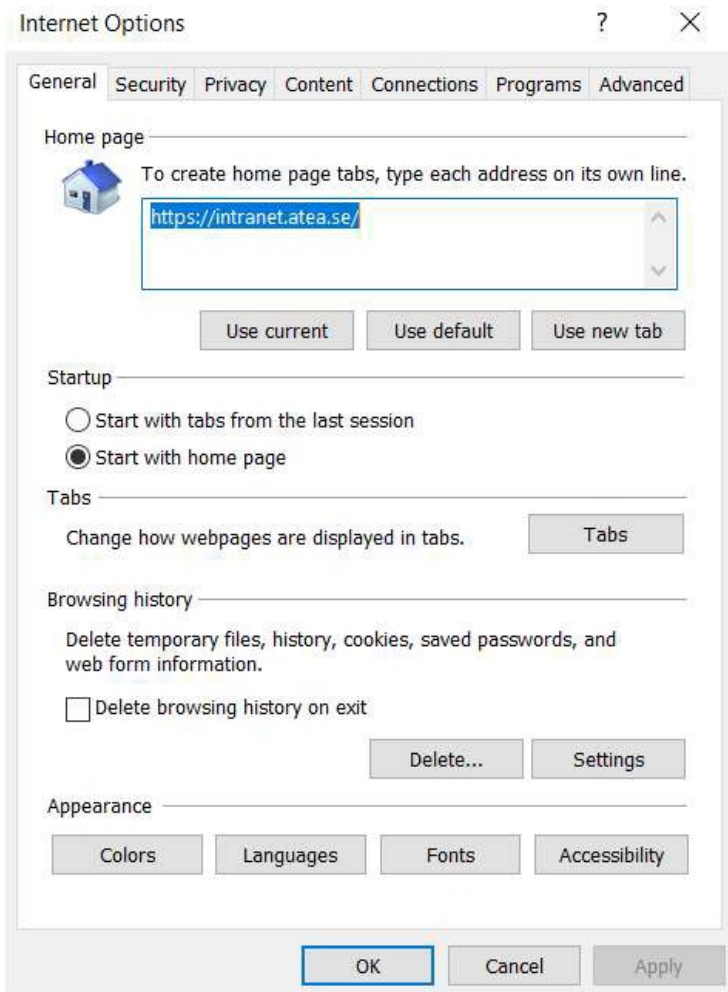
Step2: Remove the old certificate

Before you install the Swedish Maritime Administration security certificate you need to remove previously installed certificates from this issuer.

- Start Internet Explorer and select Tools – Internet Options in the menu bar.

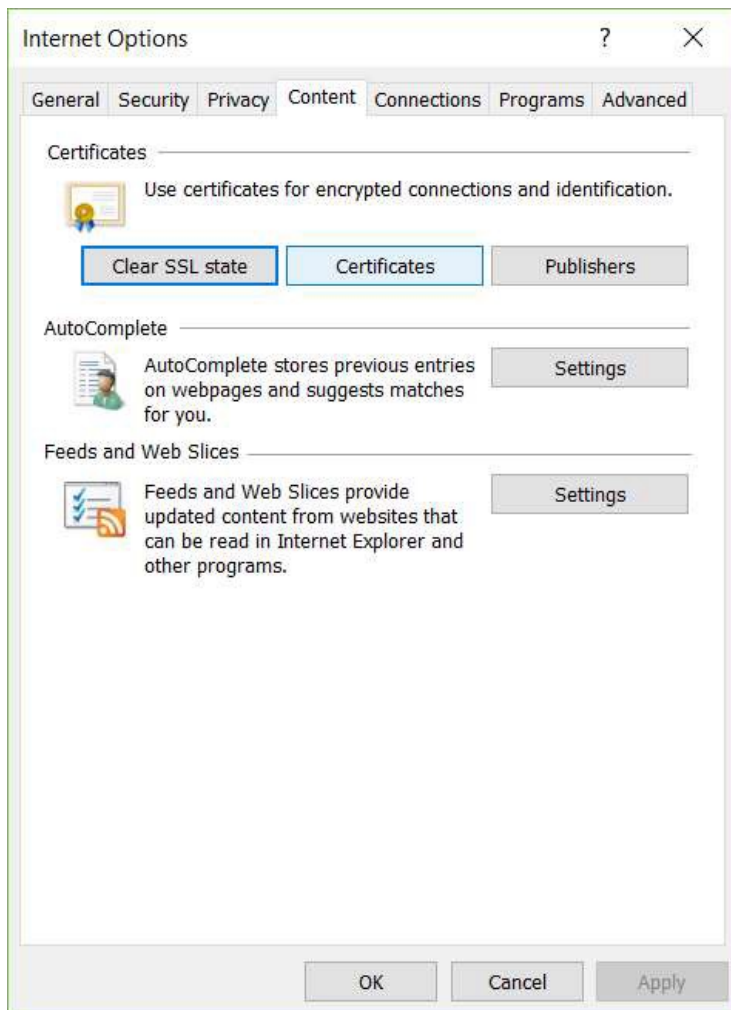


The following window appears:



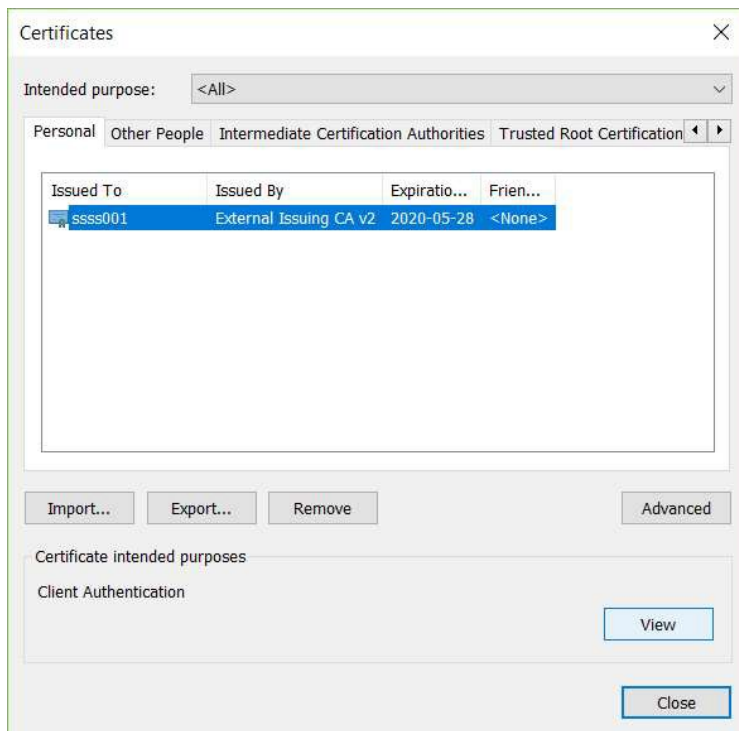
- Select the tab Content.

The following window appears:



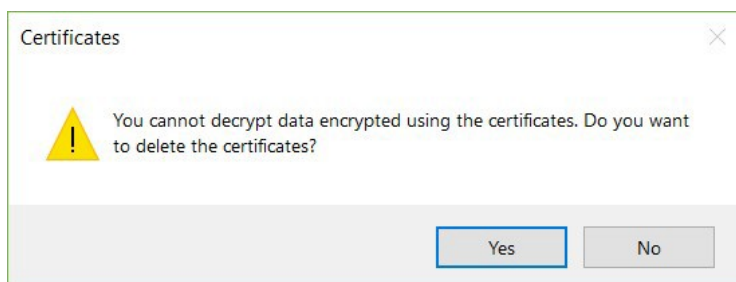
- Click on the button Certificates.

The following windows appears:



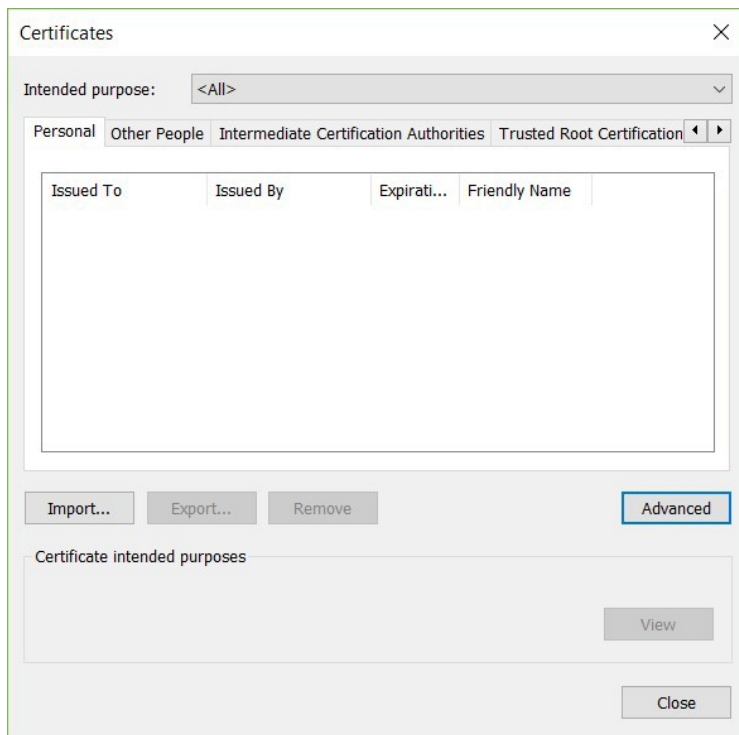
- The tab Personal should be active. If not, select this tab.
- Remove all previously installed certificates from Swedish Maritime Administration in the certificate store by selecting the certificate and click Remove. You know that the certificate is from Swedish Maritime Administration if the Issuer is **“External Issuing CA v2”** or **“SMA External CA G2”**

The following window appears.



- Click Yes.

The certificate store should now be cleared from any certificates issued by the Swedish Maritime Administration.

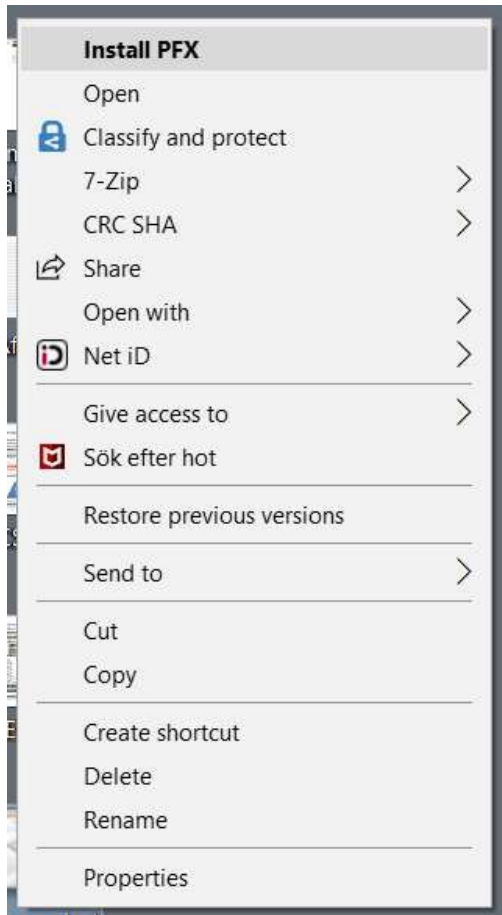


- Click Close

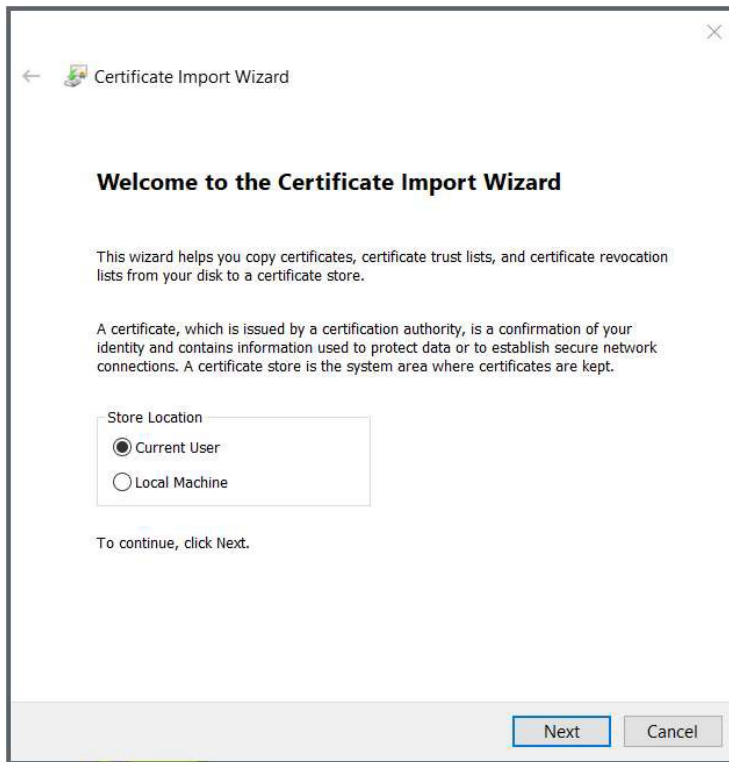
Step3: Install the new certificate

Perform the following steps to install the Swedish Maritime Administration security certificate:

- Locate the certificate file <filename.pfx> that you received by mail from Swedish Maritime Administration and saved to your computer in the previous step.
- Right click the certificate file <filename.pfx> that you have received by mail from Swedish Maritime Administration and select Install PFX.

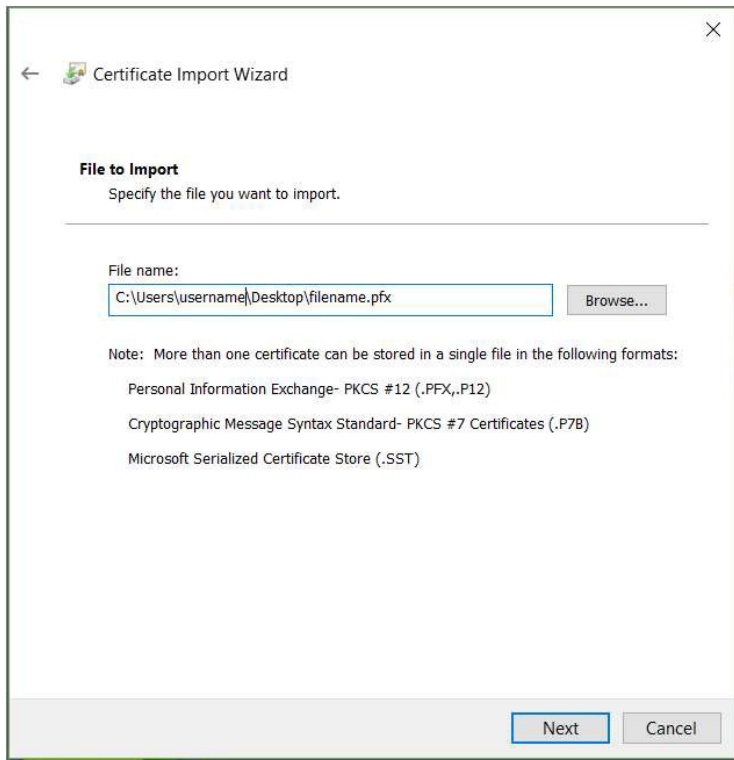


The following window appears:



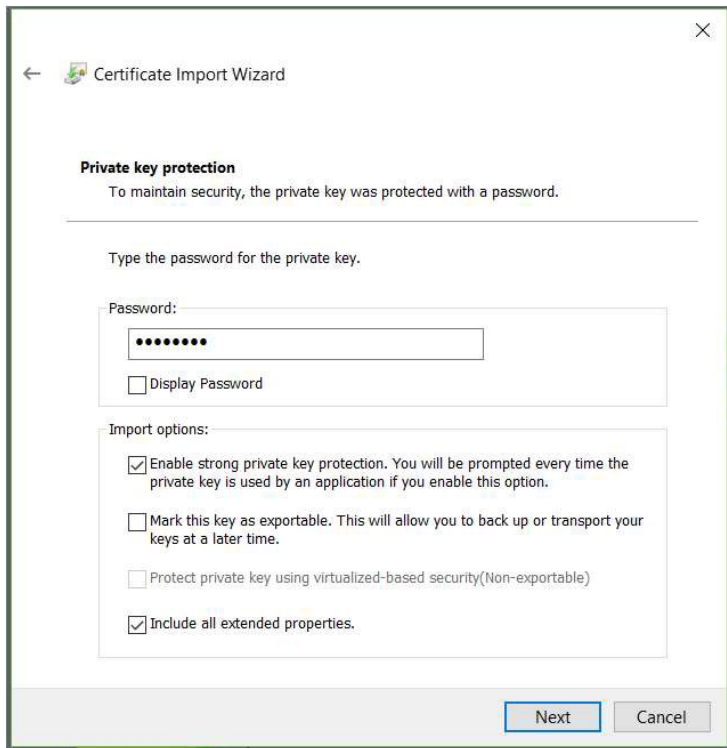
- Select Current User and then Next

The following window will appear:

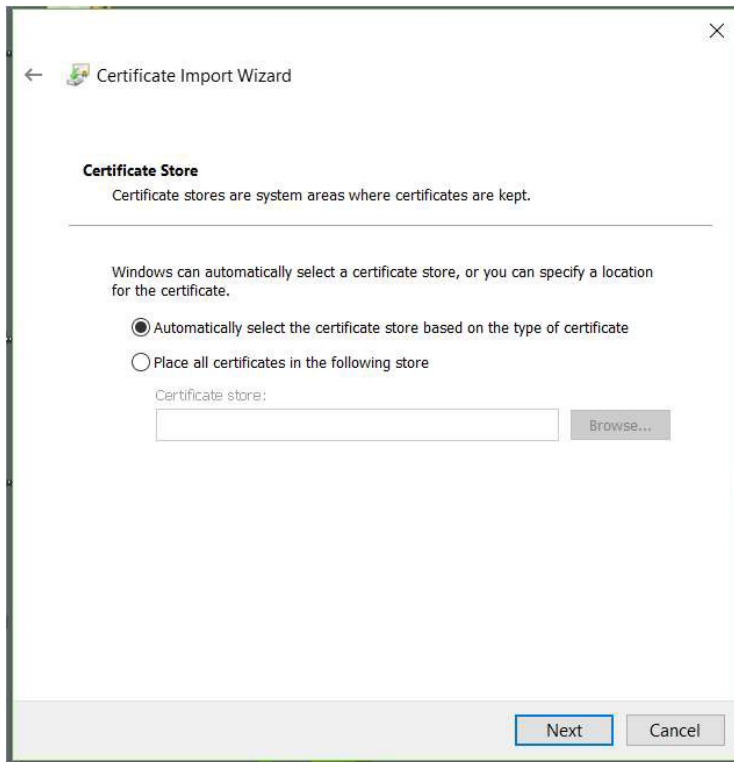


- Click Next

The following window will appear:

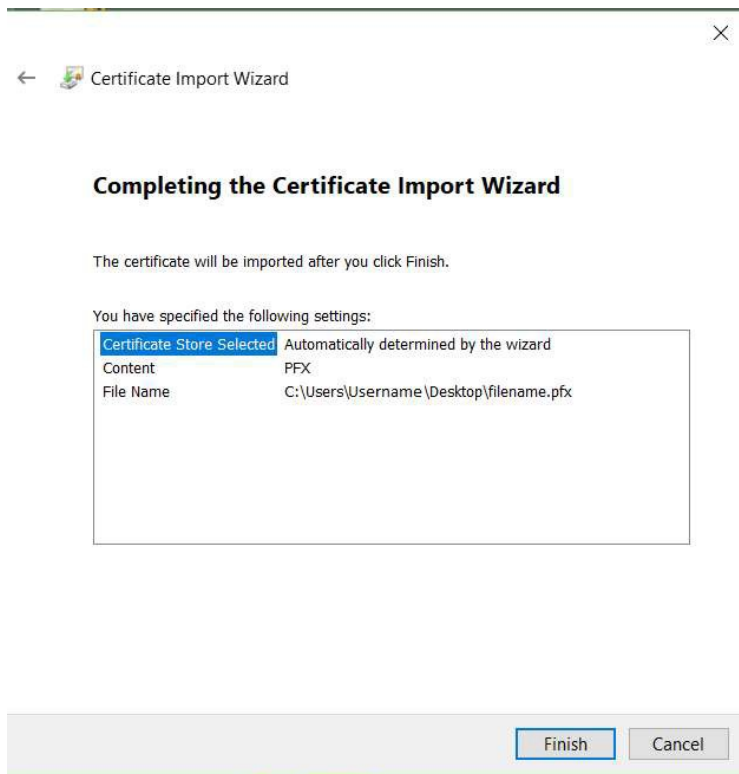


- Enter the password you received by Text Message (SMS) from Swedish Maritime Administration.
- Check **“Enable strong private key protection. You will be prompted every time the private key is used by an application if you enable this option”**, according to the window above.
- Click Next.



- Leave the preselected option “**Automatically select the certificate store based on the type of certificate**”. This will allow your browser to find the correct certificate when visiting Swedish Maritime Administration’s e-services.
- Click Next.

The following window will appear:



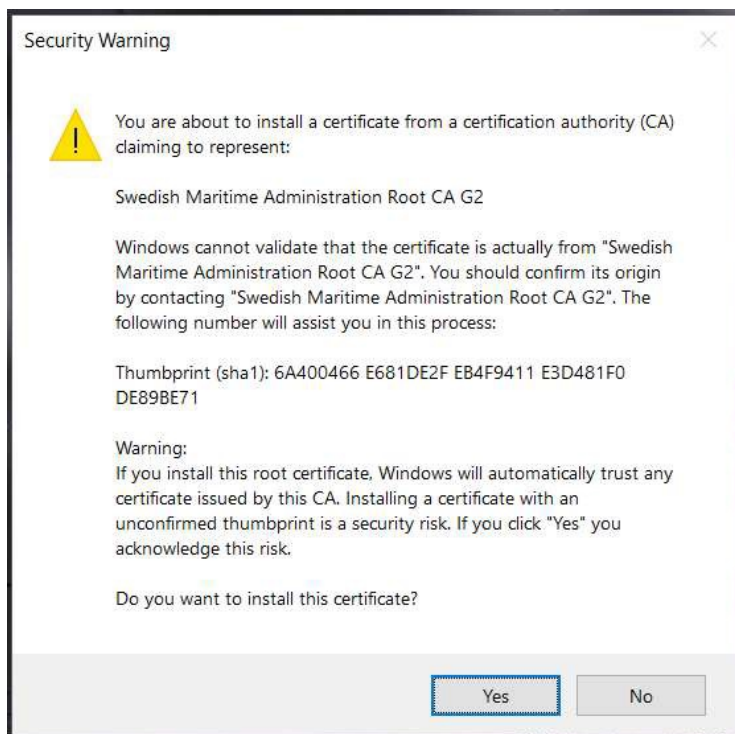
- Click Finish.

The following window will appear:



- Click OK.

After clicking OK in the above message box, Internet Explorer will ask for the private key for this certificate every time the certificate is to be used. You might experience the following security warning when finishing the certificate installation:

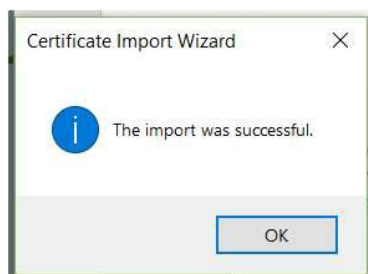


Verify that your new security certificate is issued from a Swedish Maritime Administration Certificate Authority. The thumbprint (Sha1) stated in the warning above should be as follows:

6A400466 E681DE2F EB4F9411 E3D481F0 DE89BE71

- If the thumbprint is correct, press Yes

The following confirmation will appear:



- Click OK

You have now completed the installation of your Swedish Maritime Administration security certificate.

- Make sure to save the certificate file that you received from Swedish Maritime Administration to a secure location for future use. I.e. for backup reasons and for installation on other devices. Keep the certificate and the password separated.
- Done!

Installation in Google Chrome

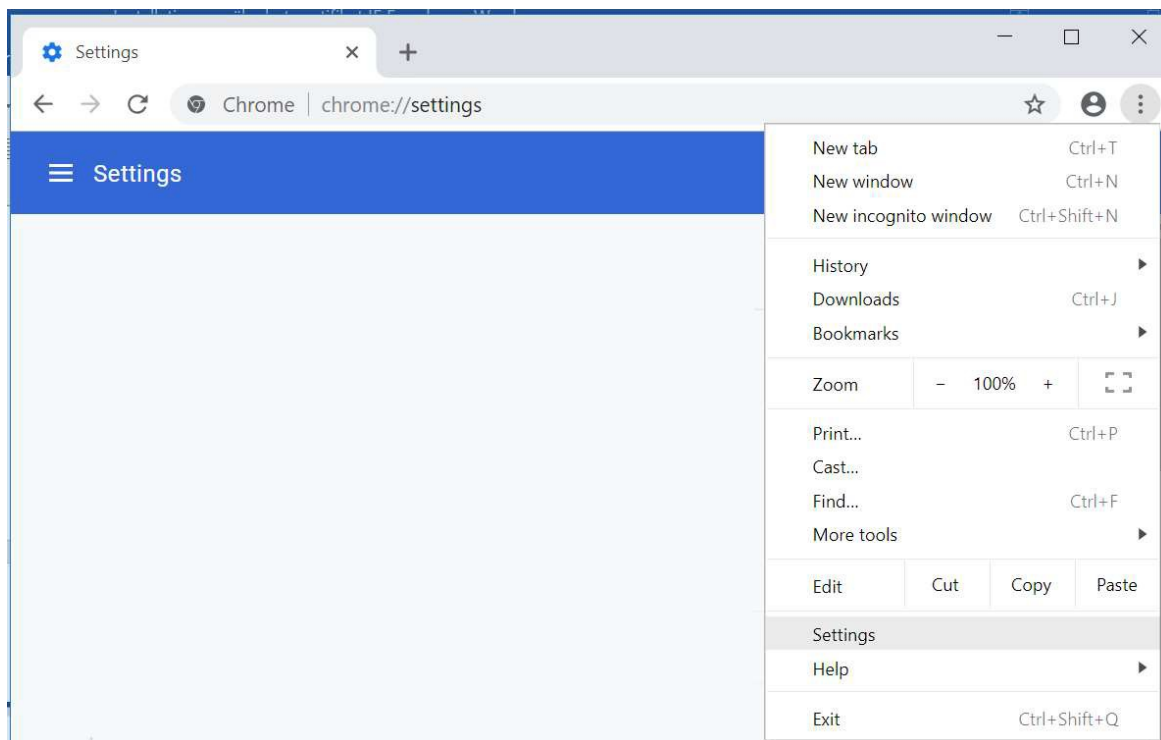
Step1: Perform the following before you start the installation

- Save the certificate <filename.pfx> which you have received from Swedish Maritime Administration by e-mail, to your computer, for example to you desktop.
- Make sure that you have the password for the certificate file, which you have received from Swedish Maritime Administration by Text Message (SMS), available.

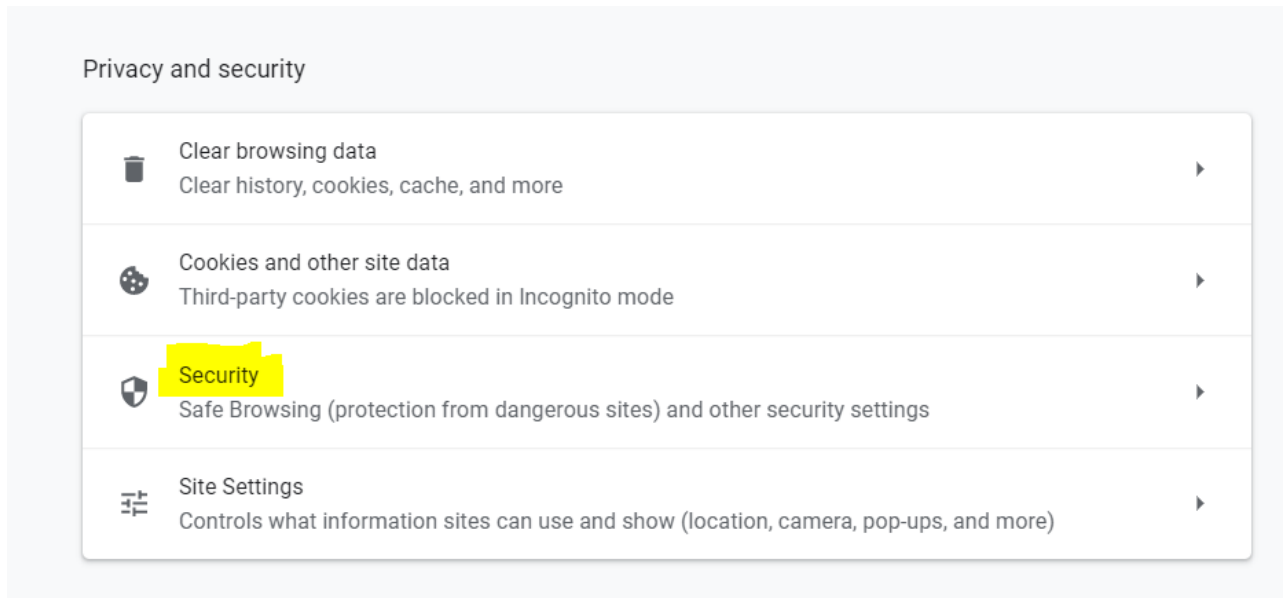
Step2: Remove the old certificate

Before you install the Swedish Maritime Administration security certificate you need to remove previously installed certificates from this issuer.

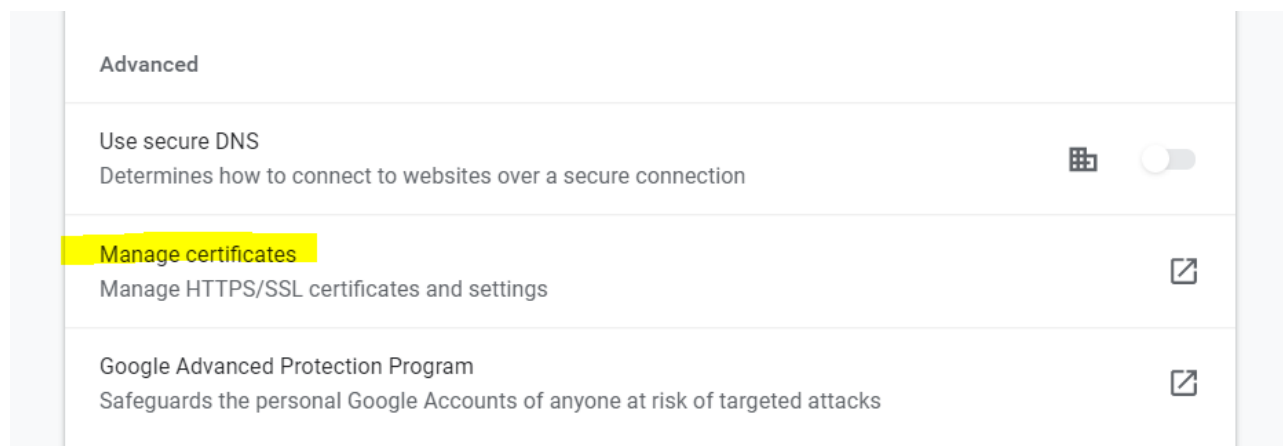
- Start Google Chrome and select “Customize and control Google Chrome”
- Select Settings



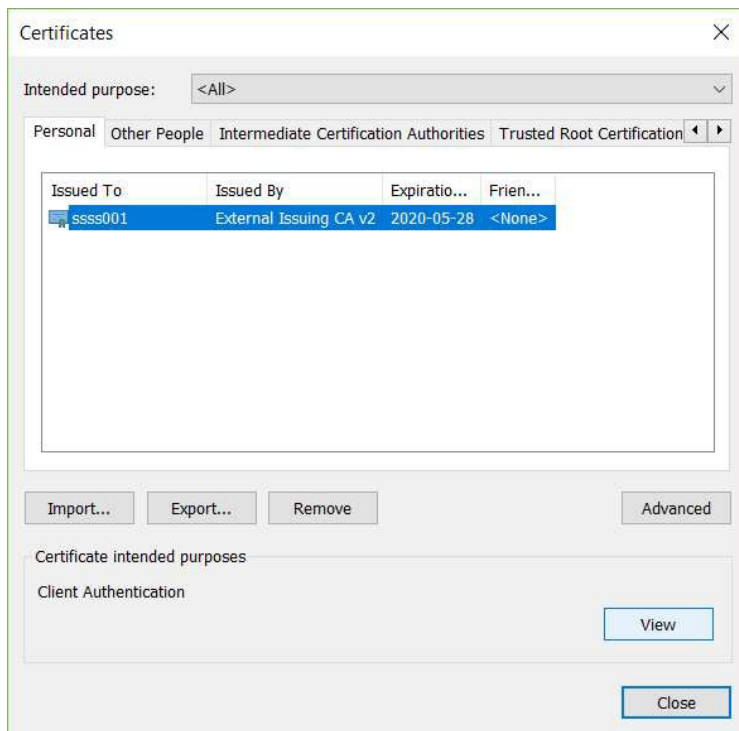
- Under the Privacy and Security section, click Security



- Scroll down to “Manage Certificates” and click on “Manage HTTPS/SSL certificates and settings”.

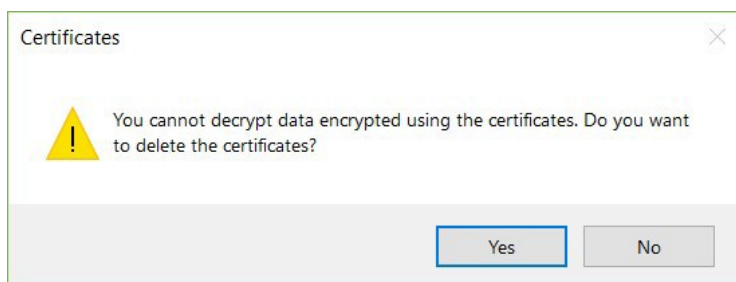


The following window will appear:



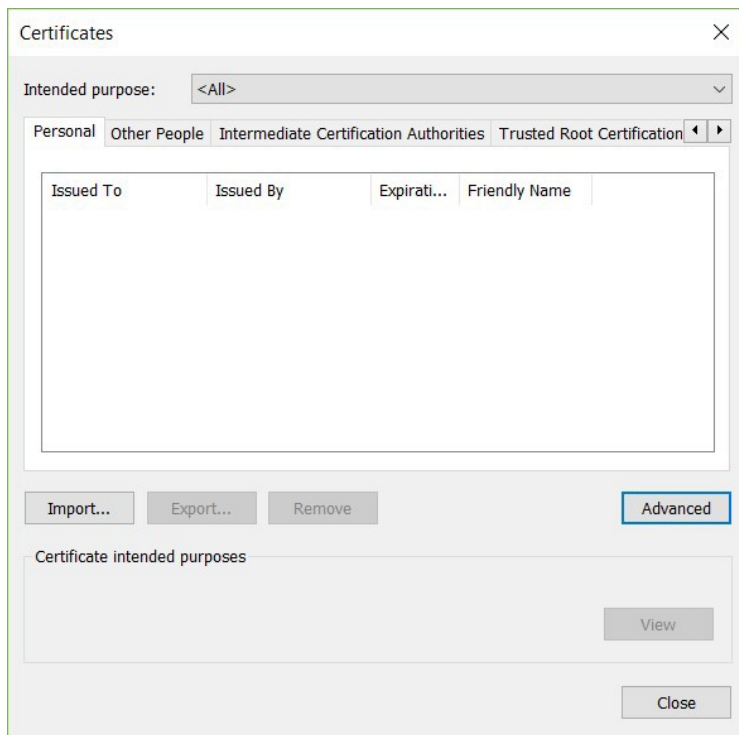
- The tab Personal should be active at this point. If not, select it.
- Remove all previously installed certificates from Swedish Maritime Administration in the certificate store by selecting the certificate and click Remove. You know that the certificate is from Swedish Maritime Administration if the Issuer is “External Issuing CA v2” or “SMA External CA G2”

The following window appears.



- Click Yes.

The certificate store should now be cleared from any certificates issued by the Swedish Maritime Administration.

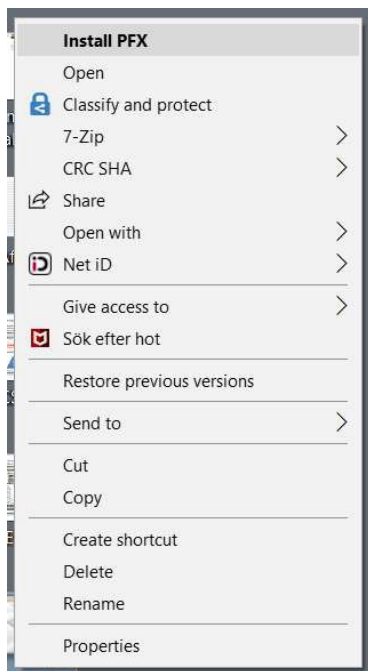


- Click Close

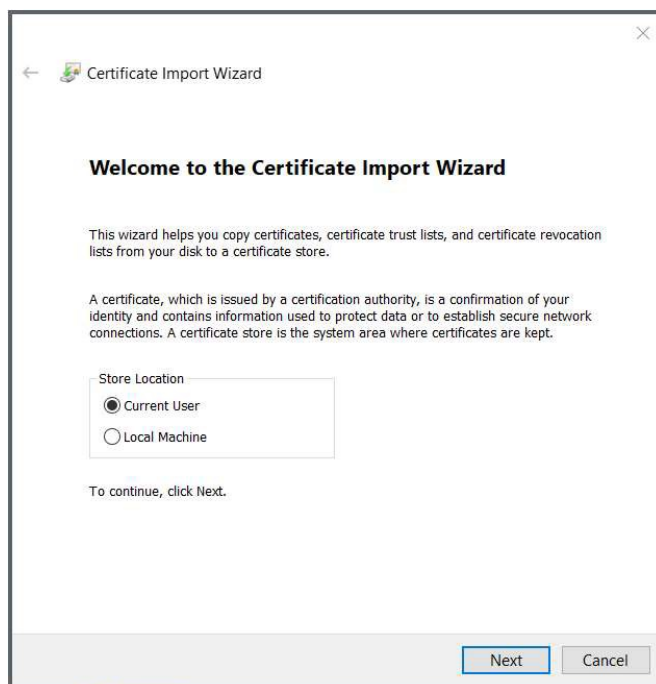
Step3: Install the new certificate

Perform the following steps to install the Swedish Maritime Administration security certificate:

- Locate the certificate file <filename.pfx> that you received by mail from Swedish Maritime Administration and saved to your computer in the previous step.
- Right click the certificate file <filename.pfx> that you have received by mail from Swedish Maritime Administration and select Install PFX.

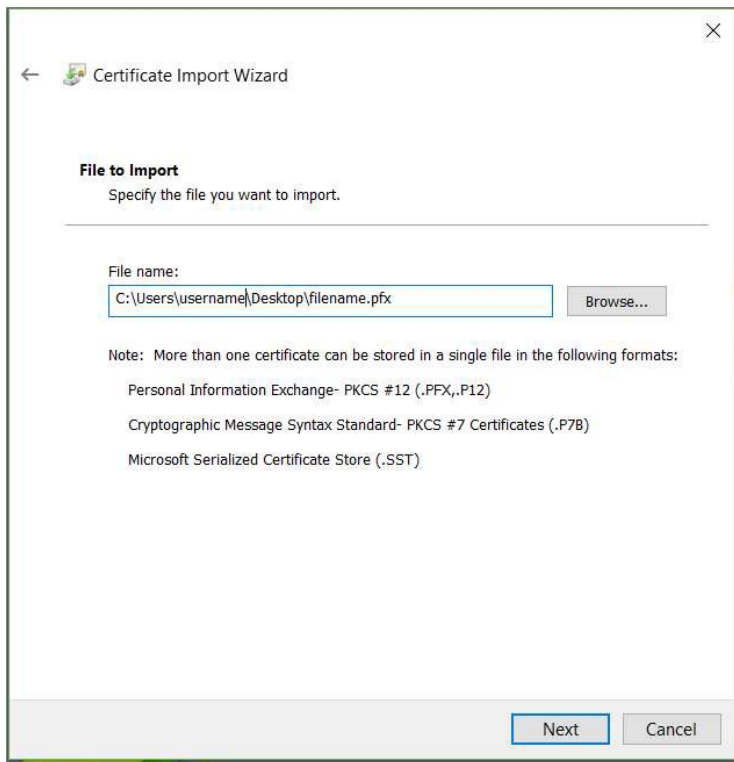


The following window appears:



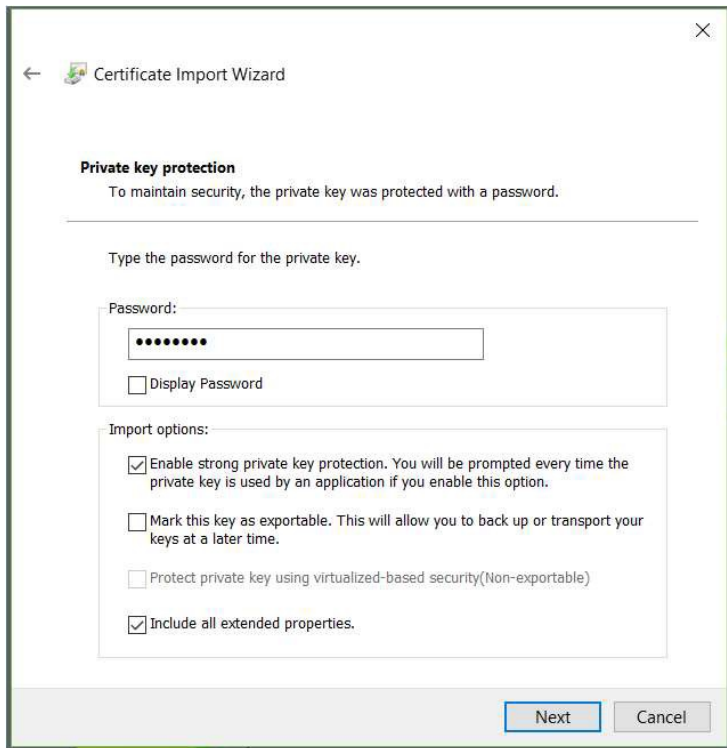
- Select Current User and then Next

The following window will appear:

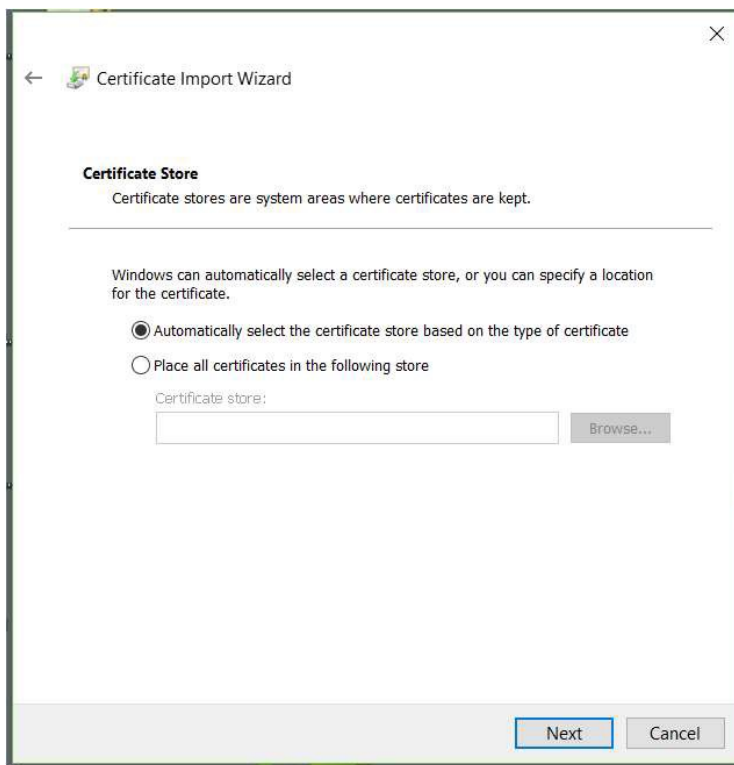


- Click Next

The following window will appear:

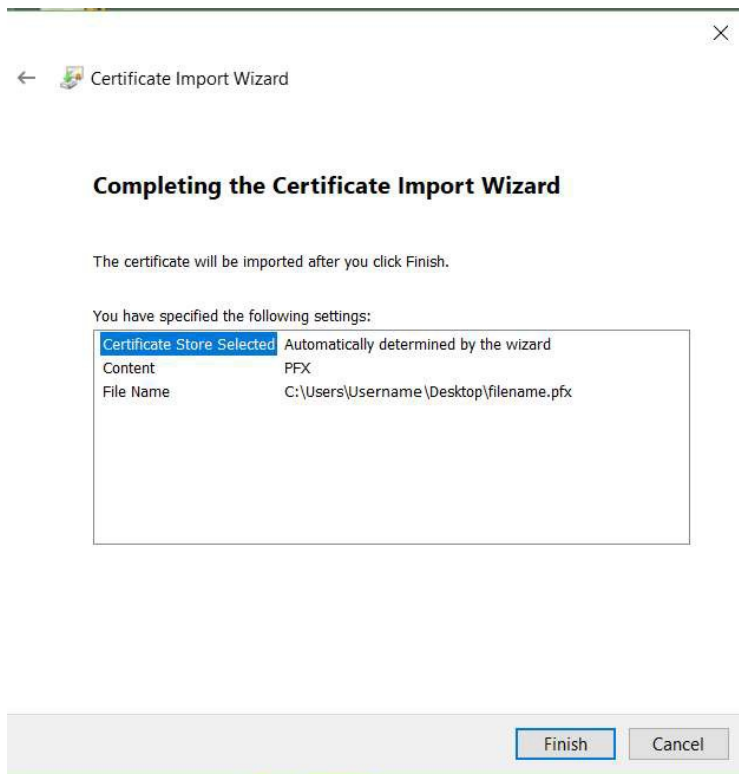


- Enter the password you received by Text Message (SMS) from Swedish Maritime Administration.
- Check “Enable strong private key protection. You will be prompted every time the private key is used by an application if you enable this option”, according to the window above.
- Click Next.



- Leave the preselected option “Automatically select the certificate store based on the type of certificate”. This will allow your browser to find the correct certificate when visiting Swedish Maritime Administration’s e-services.
- Click Next.

The following window will appear:



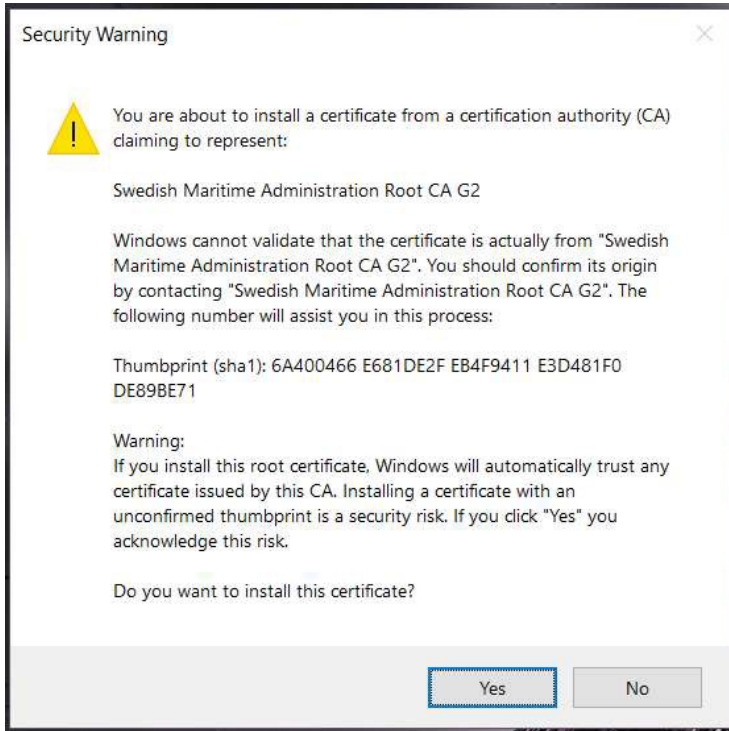
- Click Finish.

The following window will appear:



- Click OK.

After clicking OK in the above message box, Google Chrome will ask for the private key for this certificate every time the certificate is to be used. You might experience the following security warning when finishing the certificate installation:

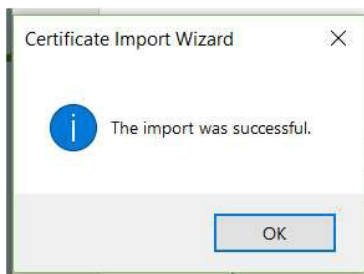


To be sure that your new security certificate is issued from a Swedish Maritime Administration Certificates Authority, the Thumbprint (sha1) in the message box above should be as follows:

6A400466 E681DE2F EB4F9411 E3D481F0 DE89BE71

- If the thumbprint is correct, press Yes

The following confirmation will appear:



- Click OK

You have now completed the installation of your Swedish Maritime Administration security certificate.

- Make sure to save the certificate file the you received from Swedish Maritime Administration to a secure location for future use (i.e. for backup reasons and for installation on other devices). Keep the certificate and the password separated.
- Done!

Installation in MacOS (Safari/Chrome)

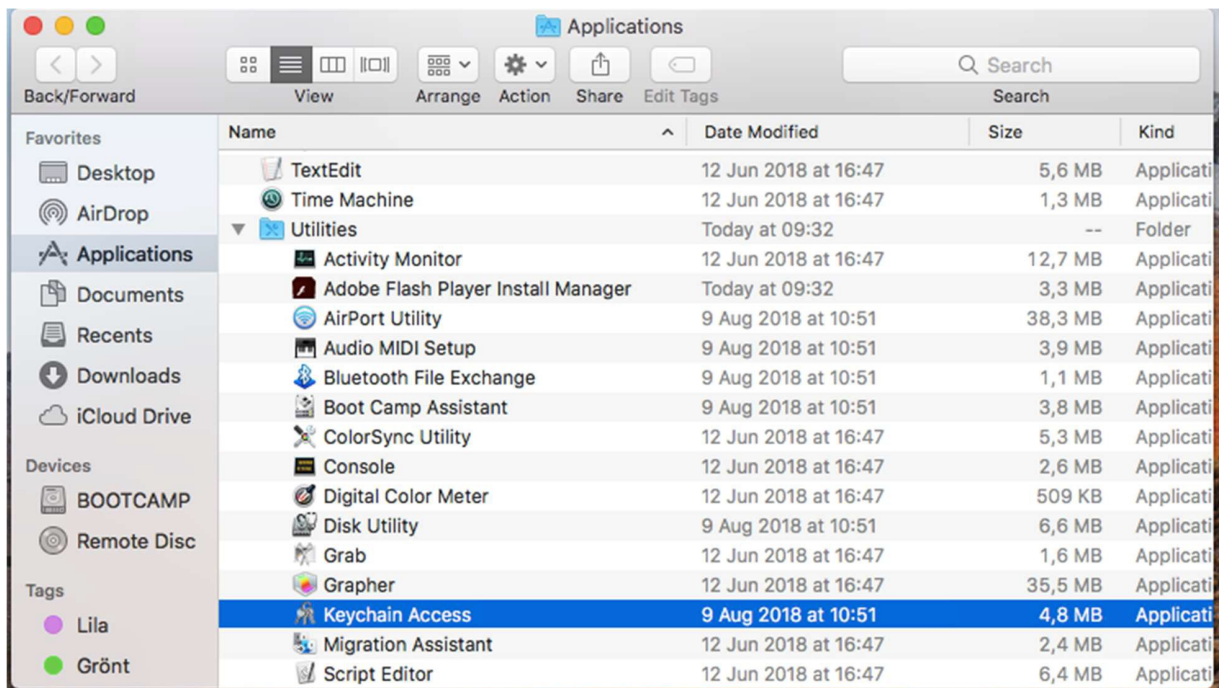
Step1: Perform the following before you start the installation

- Save the certificate <filename.pfx> which you have received from Swedish Maritime Administration by e-mail, to your computer, for example to you desktop.
- Make sure that you have the password for the certificate file, which you have received from Swedish Maritime Administration by Text Message (SMS), available.

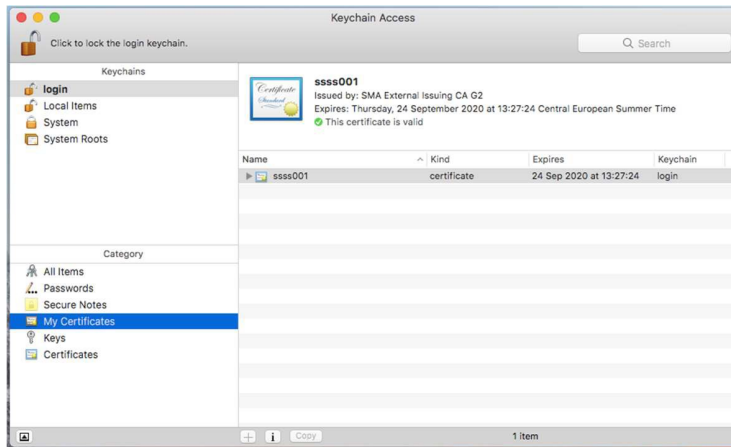
Step2: Remove the old certificate

Before you install the Swedish Maritime Administration security certificate you need to remove previously installed certificates from this issuer.

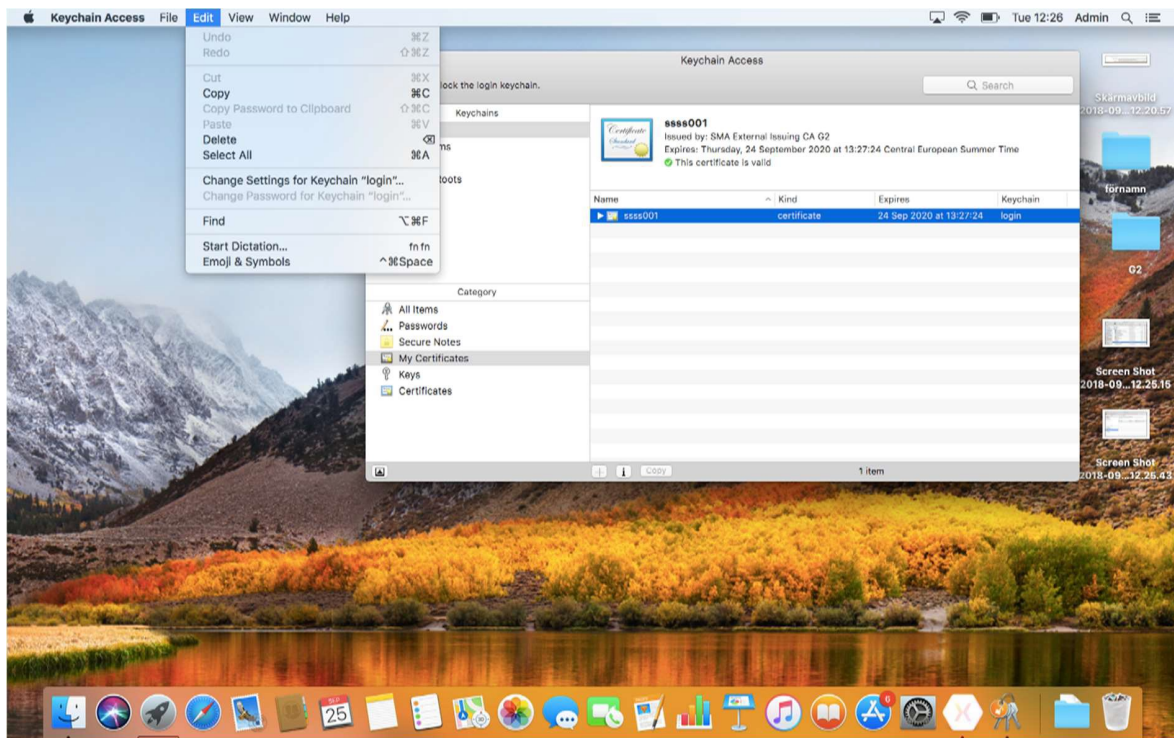
- Start Internet Applications and navigate to Key Chain Access.



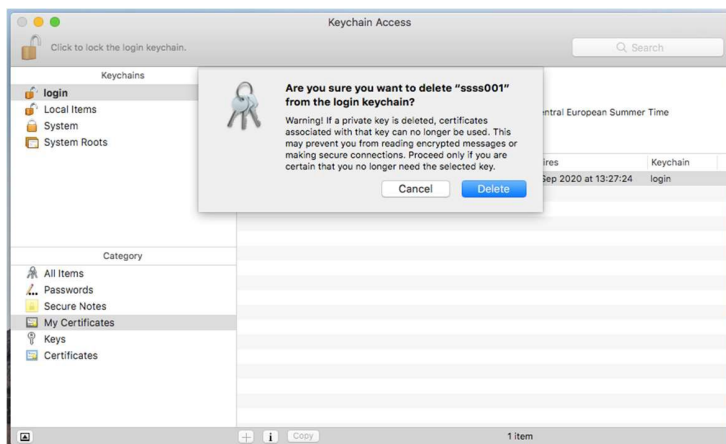
The following window will appear:



- Select **My Certificates** in all Keychains, and check if there are any previously installed certificates from Swedish Maritime Administration in any of them.
- If there are any certificates from Swedish Maritime Administration (**Issued by: External Issuing CA v2**, or **SMA External Issuing CA G2**) these certificates should be removed before installing the new certificate, in order to avoid future problems.
- Select the certificate, go to Edit in the Menu Bar, and choose Delete.

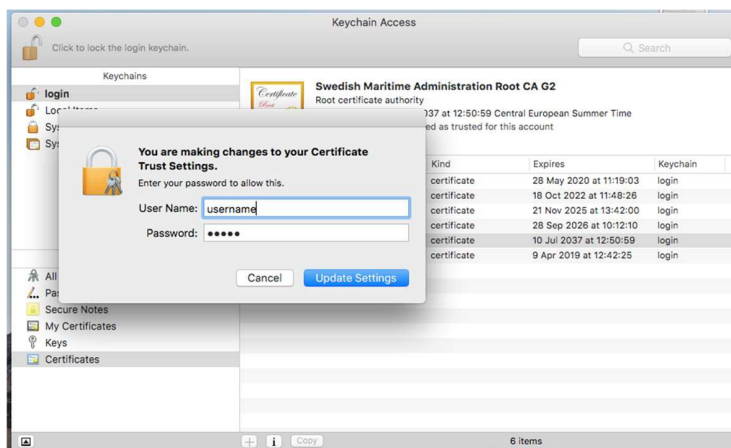


The following message box will appear:



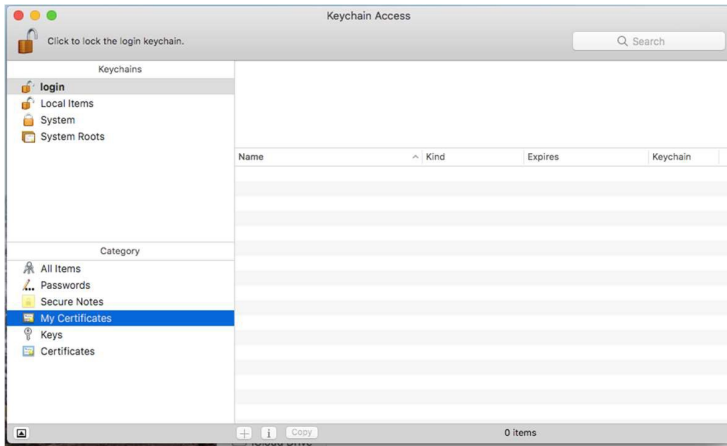
- Click Delete

The following login window might appear:



- Enter your username and password to remove the certificate from the Keychain Access.

The certificate should now be removed from all the Keychains in the Keychain Access window.

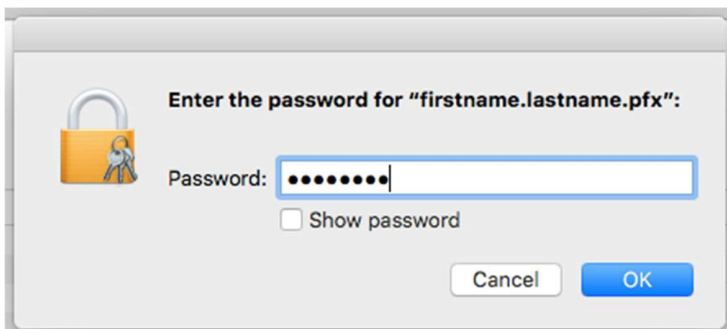


Step3: Install the new certificate

Perform the following steps to install the Swedish Maritime Administration security certificate:

- Locate the certificate file <filename.pfx> that you received by mail from Swedish Maritime Administration and saved to your computer in the previous step.
- Double click the certificate file <filename.pfx> that you have received by mail from Swedish Maritime Administration and select Install PFX.

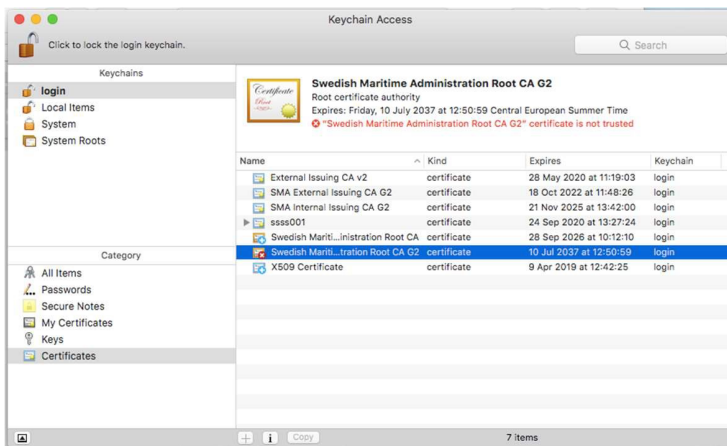
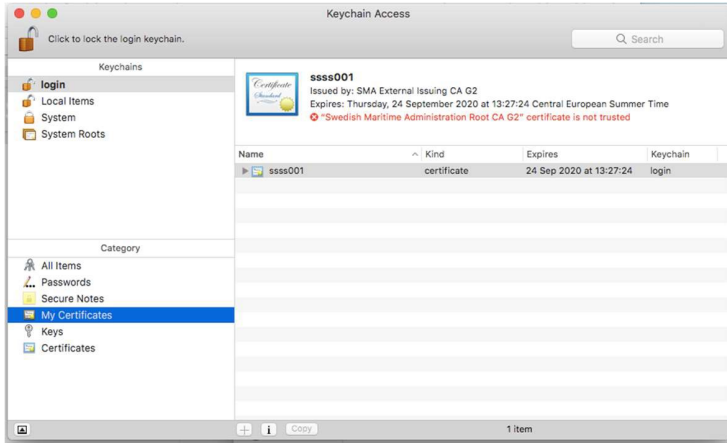
The following message box will appear:



- Enter the password that you have received by Text Message (SMS) from Swedish Maritime Administration and click OK.

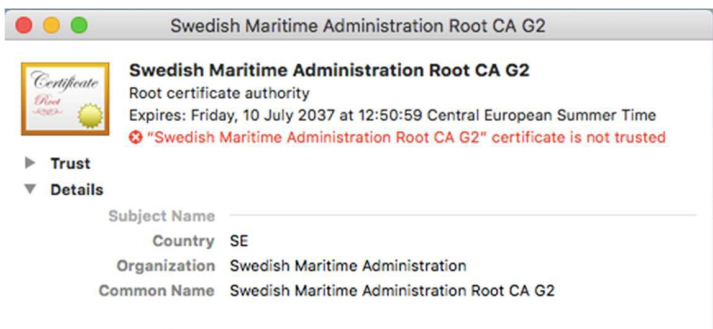
Your certificate should now be visible in the Keychain Access window as in the window below.

NOTE: You might receive a warning if your computer does not trust the Swedish Maritime Administration Root CA as shown in the below picture. If you receive this warning, you need to trust the Swedish Maritime Administration Root CA certificate on your computer.

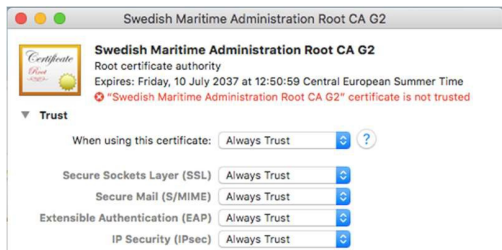


- If you receive a warning saying that Swedish Maritime Administration Root CA G2 is not trusted, navigate to **Certificates** and select **Swedish Maritime Administration Root CA G2** and double click on it.

The following window appears:

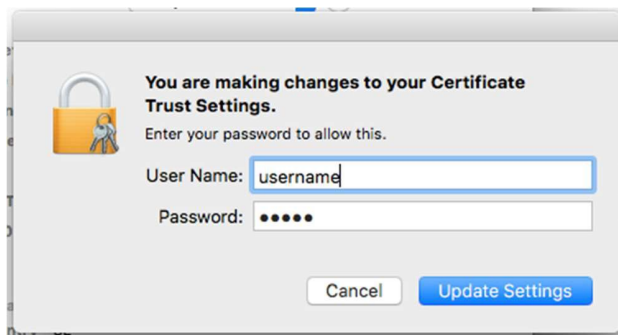


- Expand **Trust**, and in the top dropdown menu “When using this certificate:” select “**Always Trust**”.



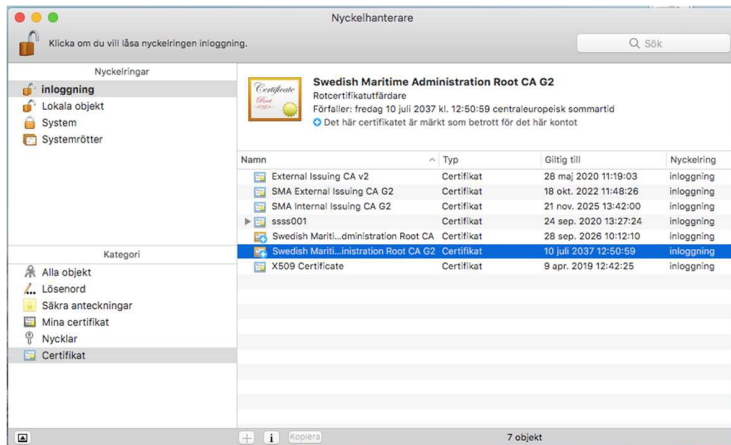
- Close the window.

The following login box might appear at this point of the installation.



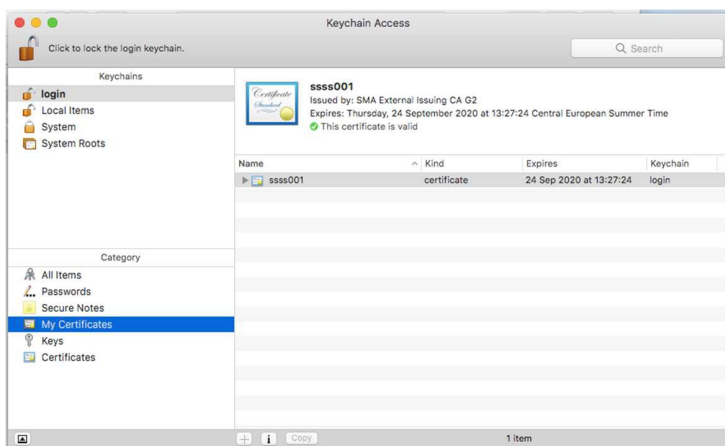
- If you receive a login box, enter **username** and **password** for **your computer**. This might be necessary, since the installation of a RootCA certificate is considered a system change.

*The warning in the Keychain Access - **Certificates** window should now have disappeared.*



- Select **My Certificates**

*No warnings should appear in Keychain Access – **My Certificates** window either:*



- The installation of your Swedish Maritime Administration security certificate is now completed.

Installation in Mozilla Firefox

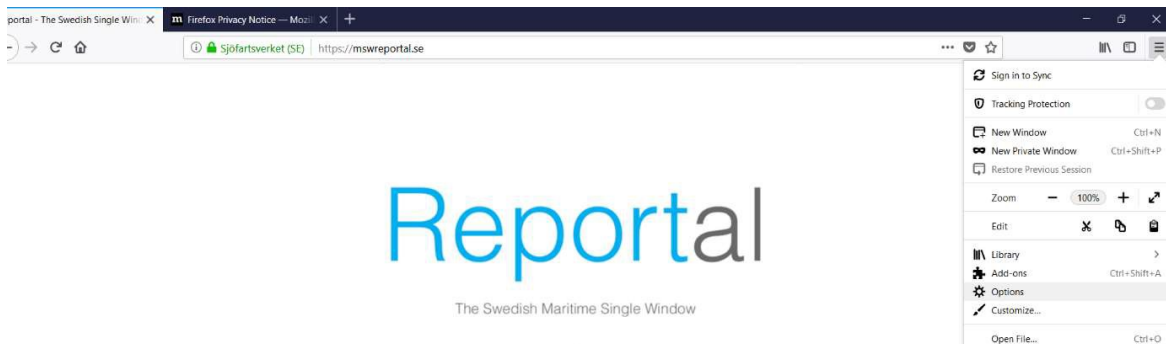
Step1: Perform the following before you start the installation

- Save the certificate <filename.pfx> which you have received from Swedish Maritime Administration by e-mail, to your computer, for example to you desktop.
- Make sure that you have the password for the certificate file, which you have received from Swedish Maritime Administration by Text Message (SMS), available.

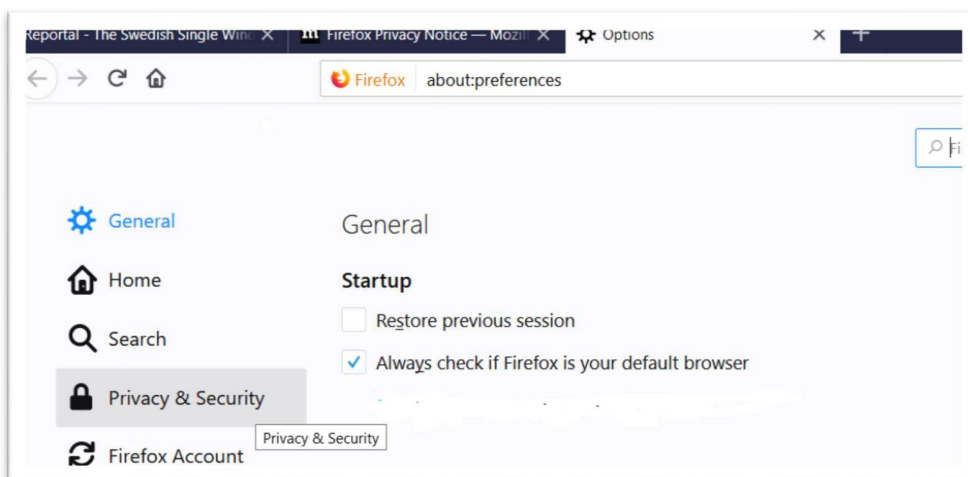
Step2: Install a new certificate in Mozilla Firefox

Before you install the Swedish Maritime Administration security certificate you need to remove previously installed certificates from this issuer.

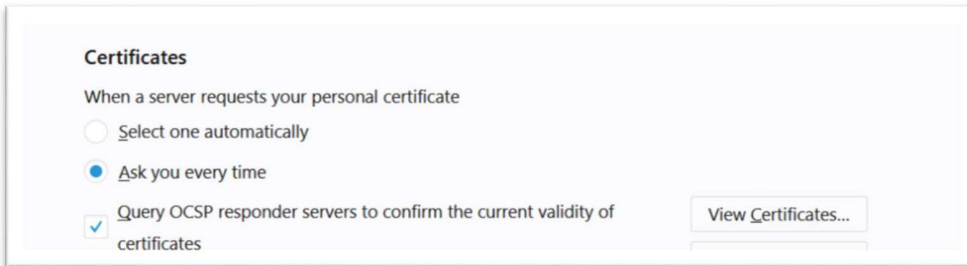
- Start Mozilla Firefox and navigate to Menu Options.



- Select Privacy & Security

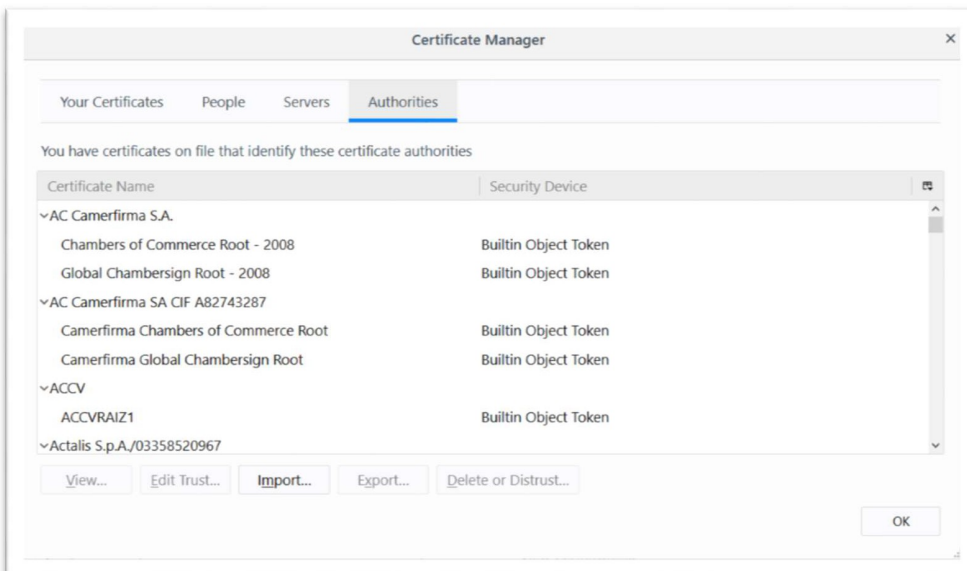


- Scroll down the page to Certificates

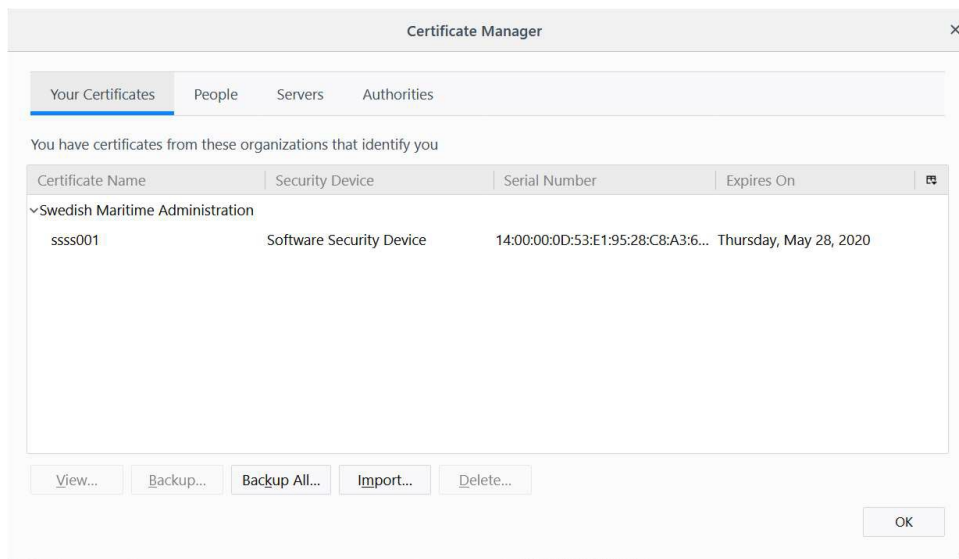


- Click View Certificates

The Certificate Manager window appears:

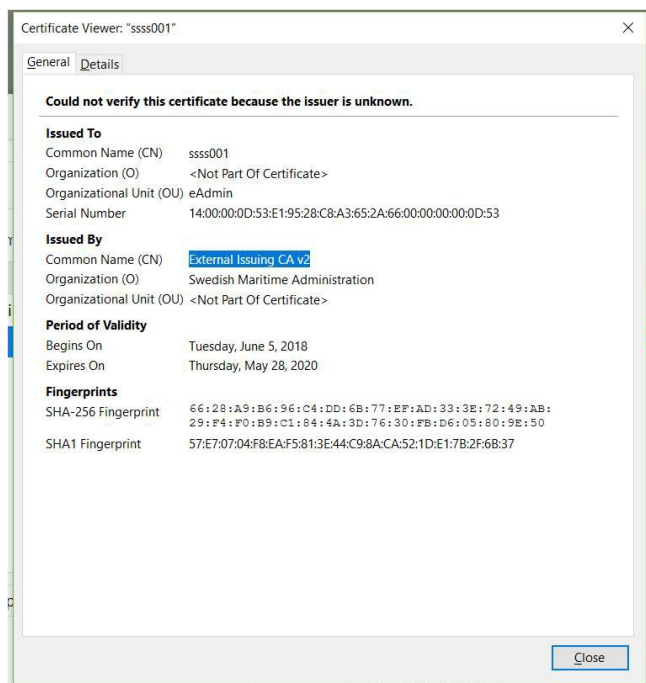


- Select the tab Your Certificates

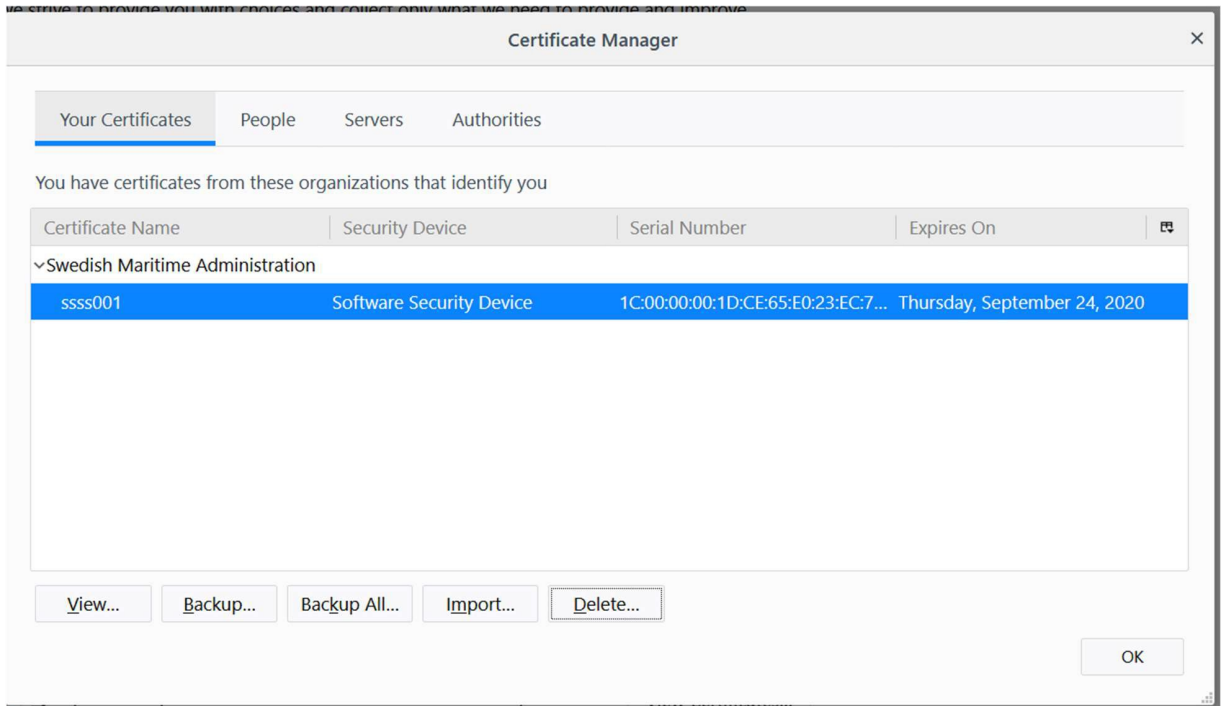


- If there are any previously installed certificates issued from the Swedish Maritime Administration, these certificates should be removed to avoid future problems. Select the certificate and click View in order to find out if Swedish Maritime Administration is the issuer of the certificate.

The following window appears. If the Issuer is: External Issuing CA v2" or SMA External Issuing CA G2, the certificate is issued by the Swedish Maritime Administration.

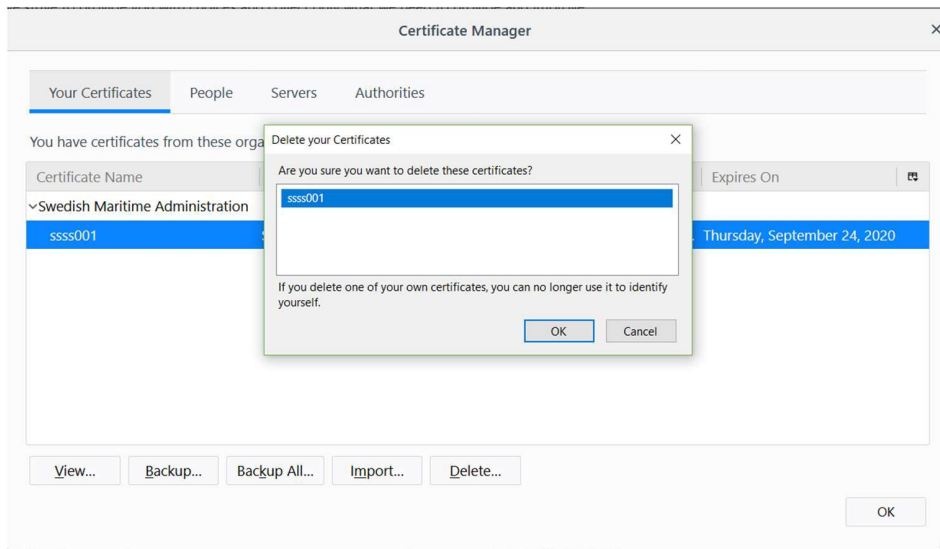


- Click Close



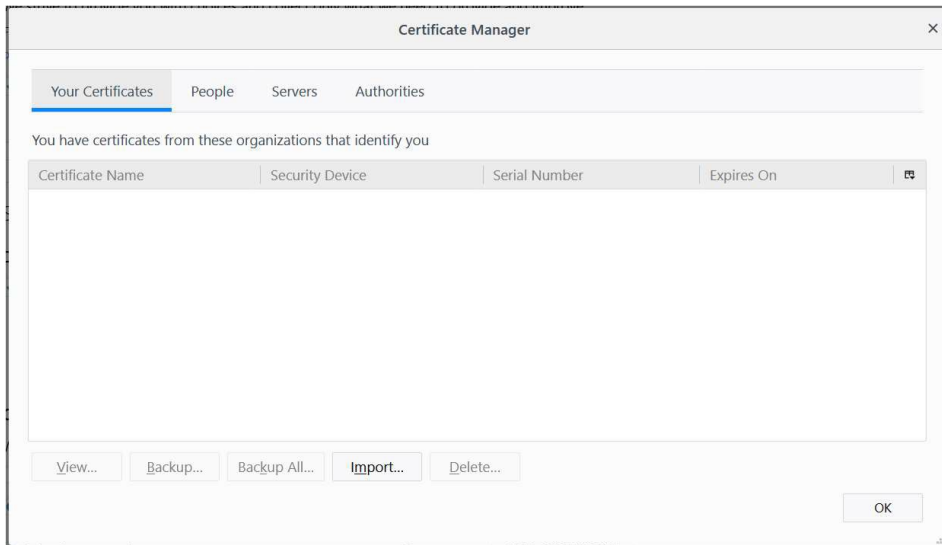
- If the certificate is issued from the Swedish Maritime Administration, select the certificate and click Delete.

The following dialogue box appears:

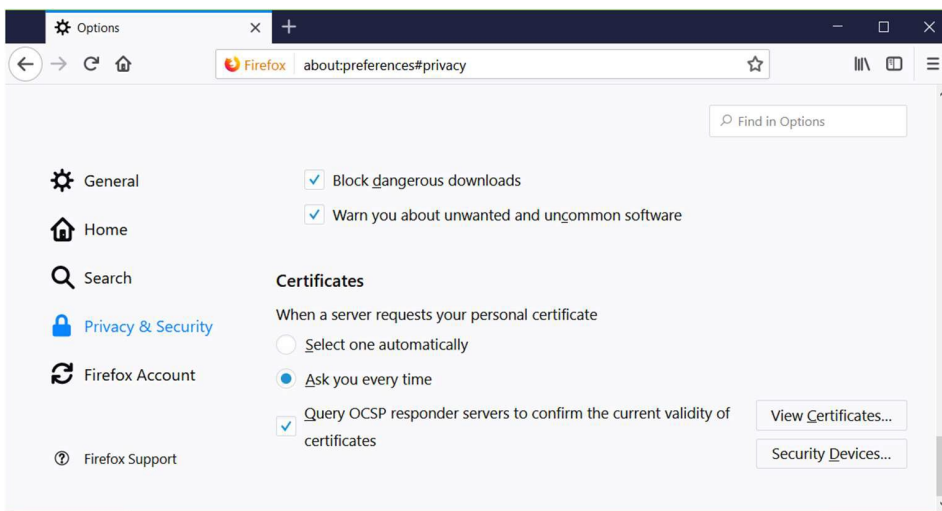


- Select the certificate in the Delete your Certificate box, and click OK.

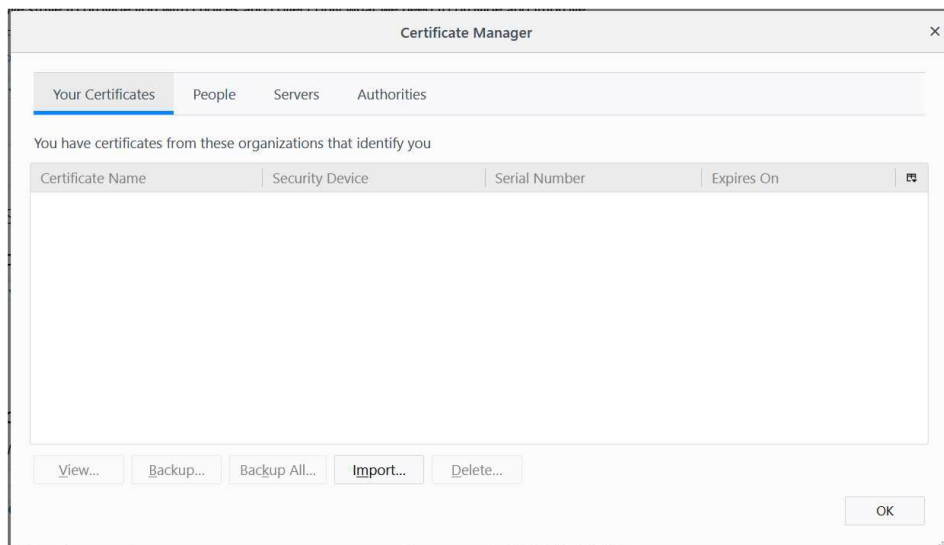
The Certificate Manager is now empty:



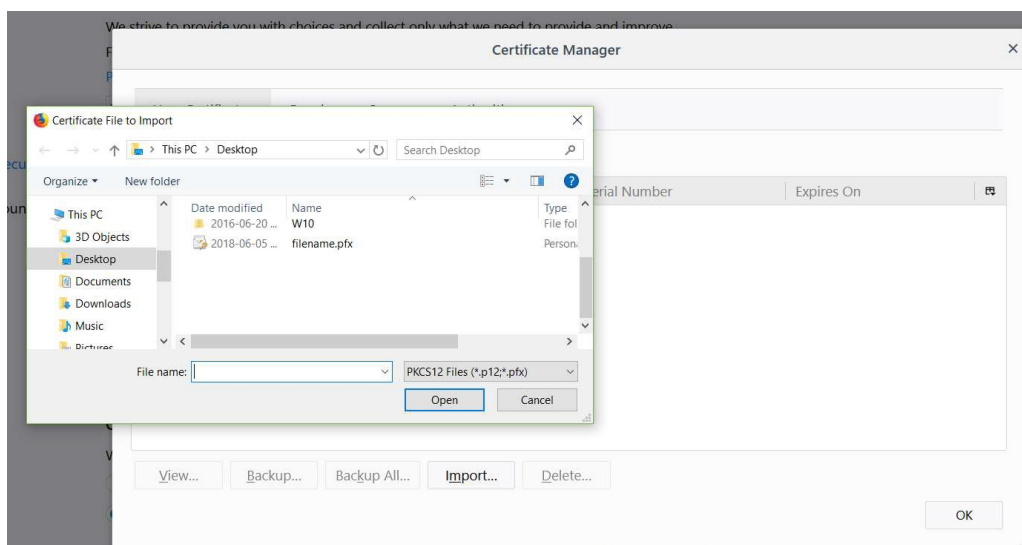
- Click OK



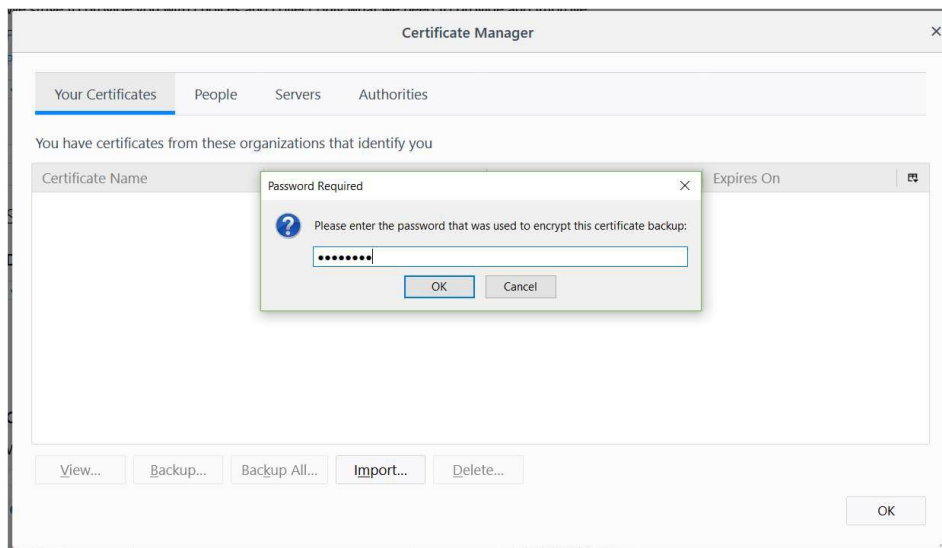
- Select Privacy & Security and click View Certificates



- Click Import

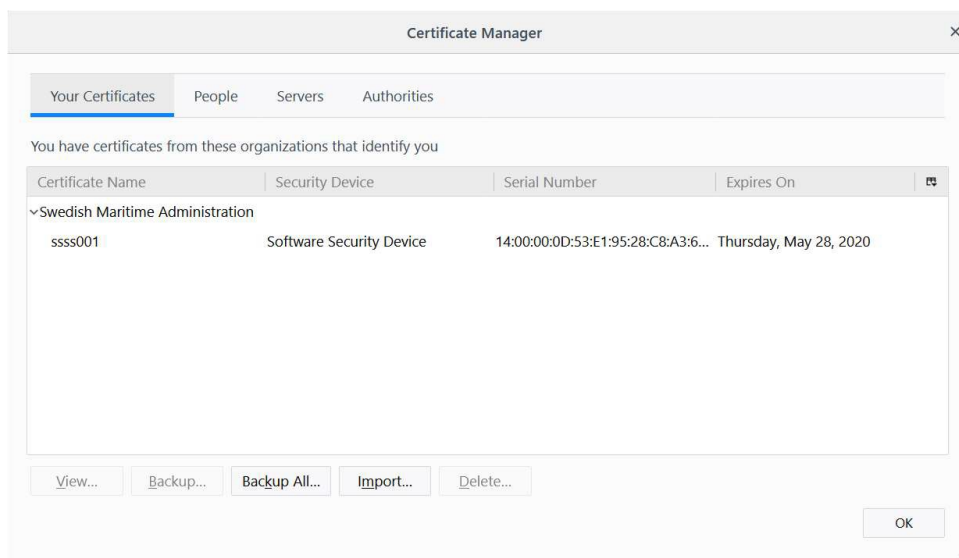


- Browse to the certificate file <filename.pfx> that you copied to your computer from the email from the Swedish Maritime Administration earlier.



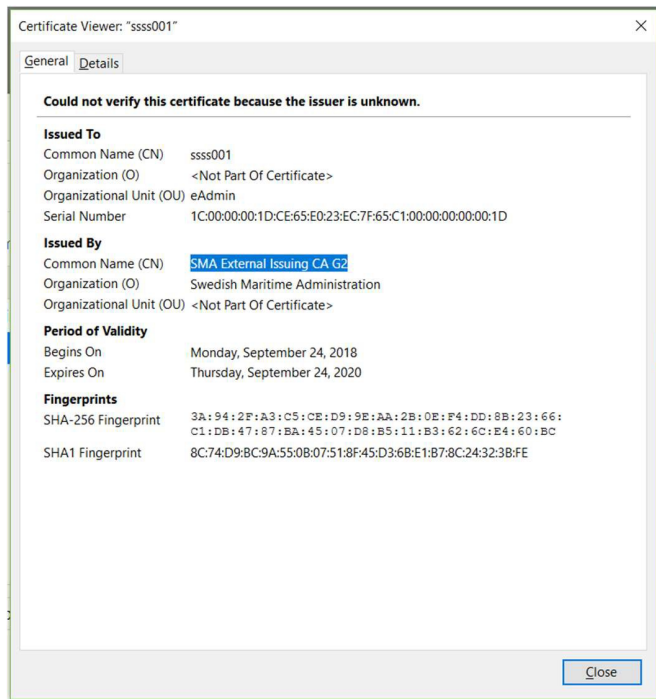
- Enter the password that you received from the Swedish Maritime Administration by Text Message SMS.

The new certificate is now installed in the Mozilla Firefox Certificate Store.



- Verify that the certificate is issued from the correct issuer by selecting the certificate and clicking View again. Issued By: should state Common Name (CN): SMA External Issuing CA G2 and Organization (O): Swedish Maritime Administration.

The following window should appear if the Issuer is correct:



- The installation of your Swedish Maritime Administration security certificate is now completed.

Installation in Microsoft Edge

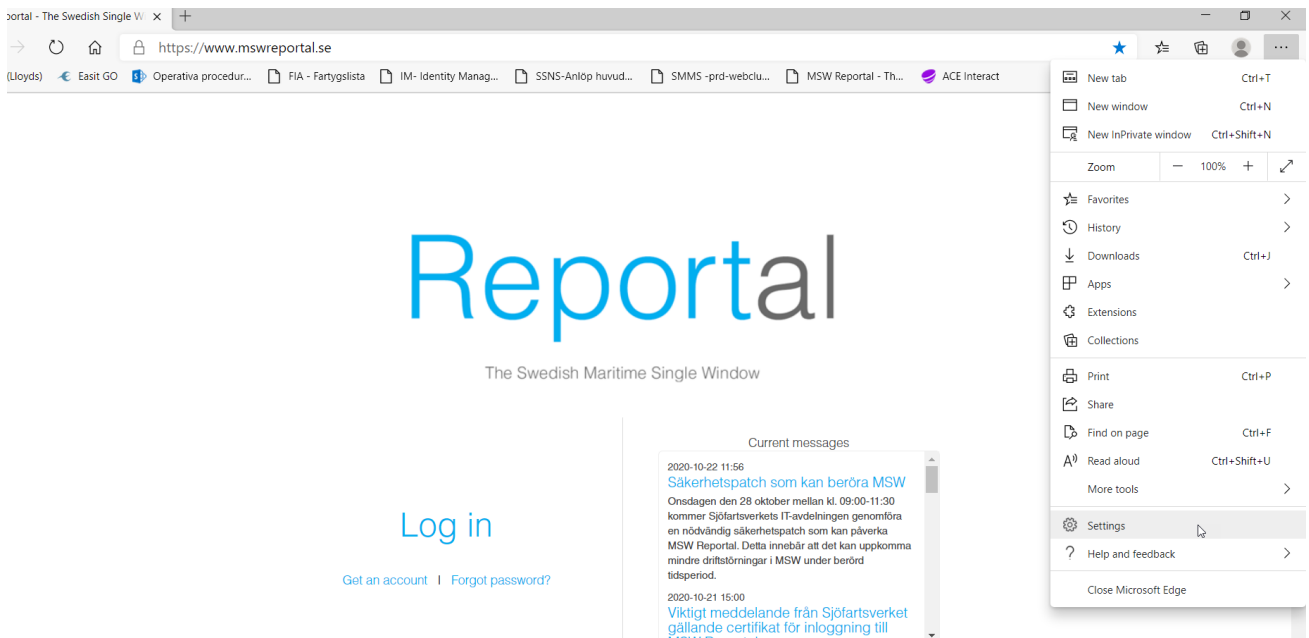
Step1: Perform the following before you start the installation

- Save the certificate <filename.pfx> which you have received from Swedish Maritime Administration by e-mail, to your computer, for example to your desktop.
- Make sure that you have the password for the certificate file, which you have received from Swedish Maritime Administration by Text Message (SMS), available.

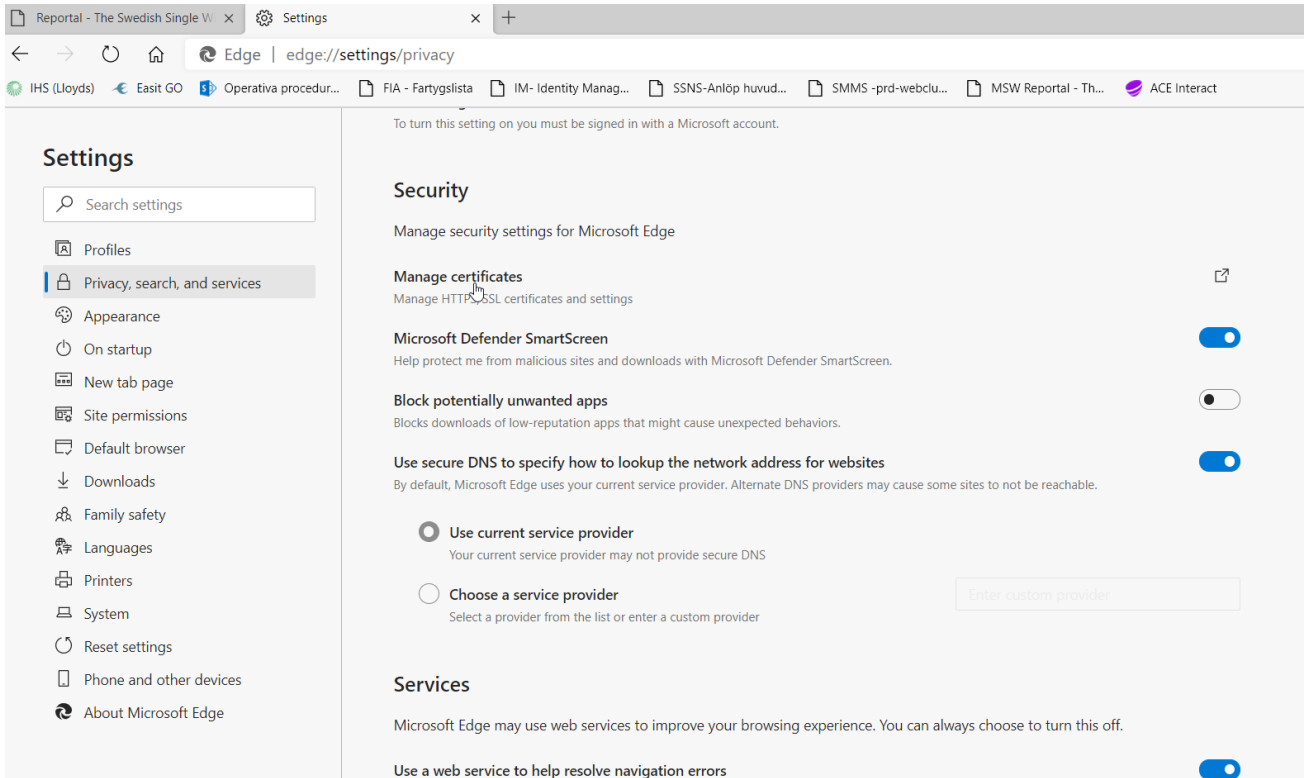
Step2: Remove the old certificate

Before you install the Swedish Maritime Administration security certificate you need to remove previously installed certificates from this issuer.

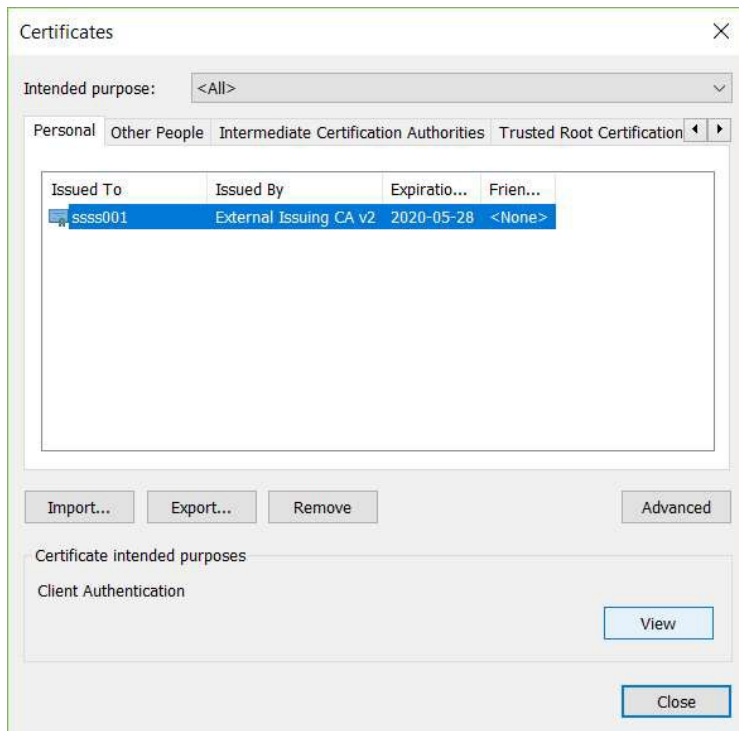
- Start Microsoft Edge, click the three dots in the upper-right corner, and select *Settings* as shown below.



Click *Privacy, search and services* on the left. Then scroll down to *Manage Certificates*.

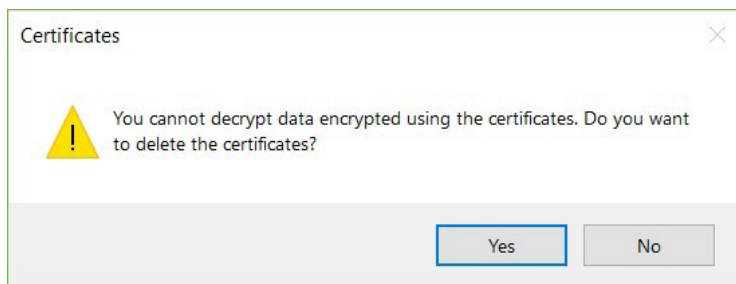


The following window will appear:



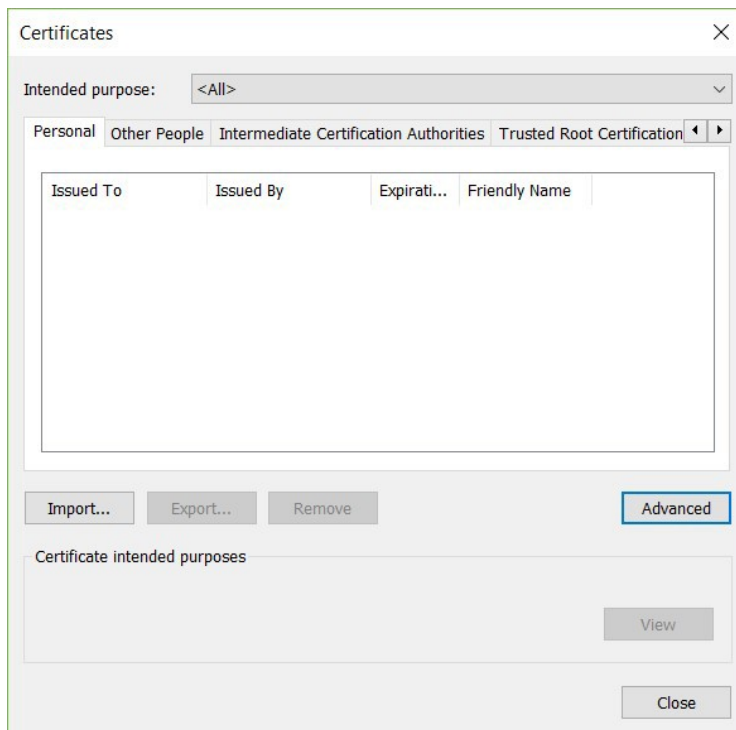
- The tab Personal should be active at this point. If not, select it.
- Remove all previously installed certificates from Swedish Maritime Administration in the certificate store by selecting the certificate and click Remove. You know that the certificate is from Swedish Maritime Administration if the Issuer is “External Issuing CA v2” or “SMA External CA G2”

The following window appears.



- Click Yes.

The certificate store should now be cleared from any certificates issued by the Swedish Maritime Administration.

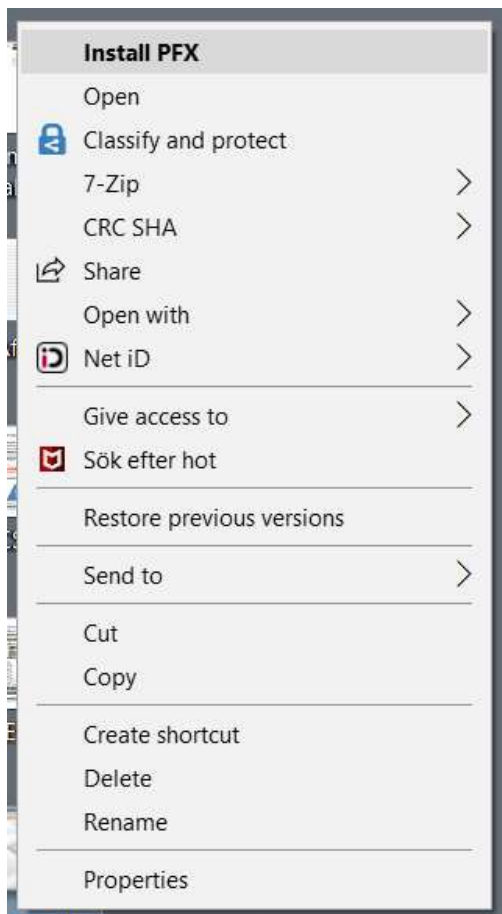


- Click Close

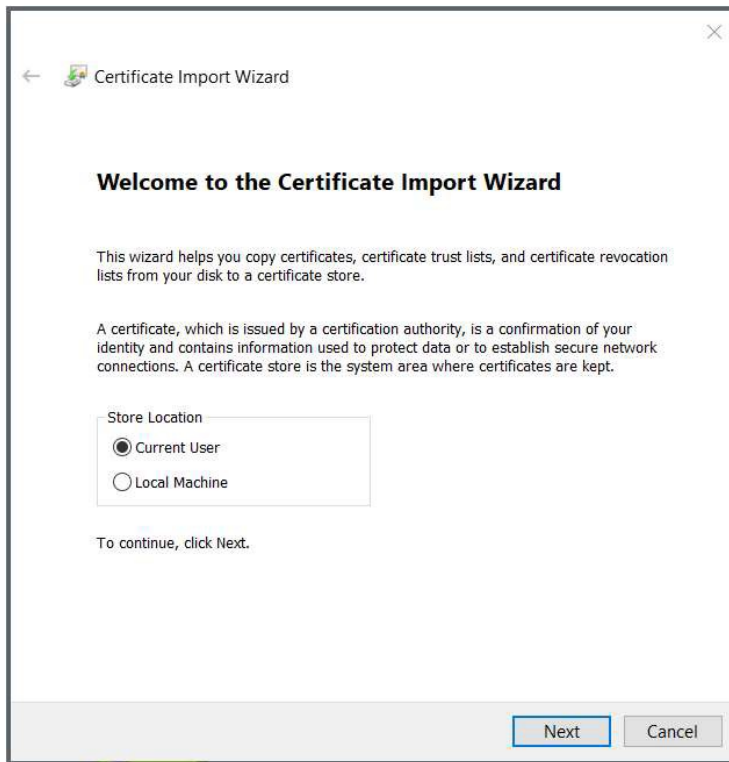
Step3: Install the new certificate

Perform the following steps to install the Swedish Maritime Administration security certificate:

- Locate the certificate file <filename.pfx> that you received by mail from Swedish Maritime Administration and saved to your computer in the previous step.
- Right click the certificate file <filename.pfx> that you have received by mail from Swedish Maritime Administration and select Install PFX.

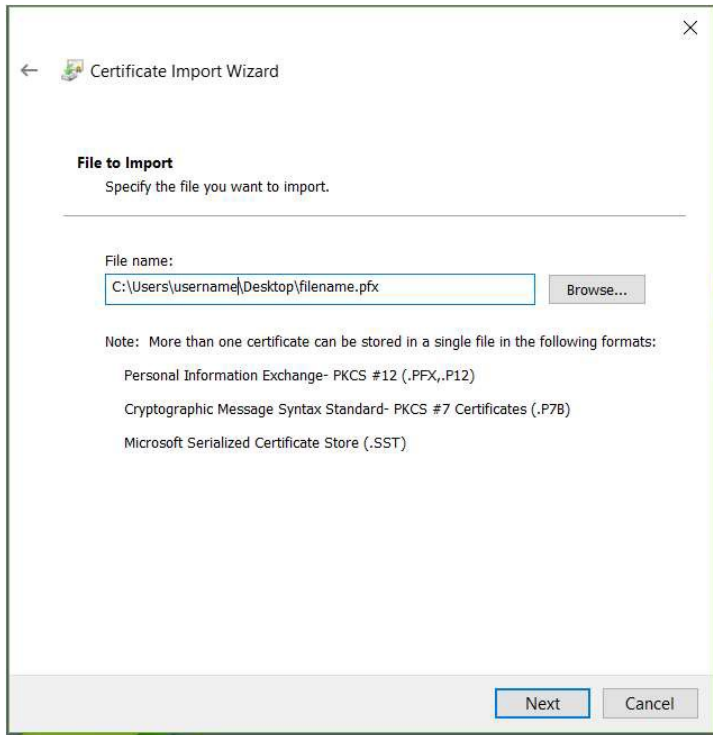


The following window appears:



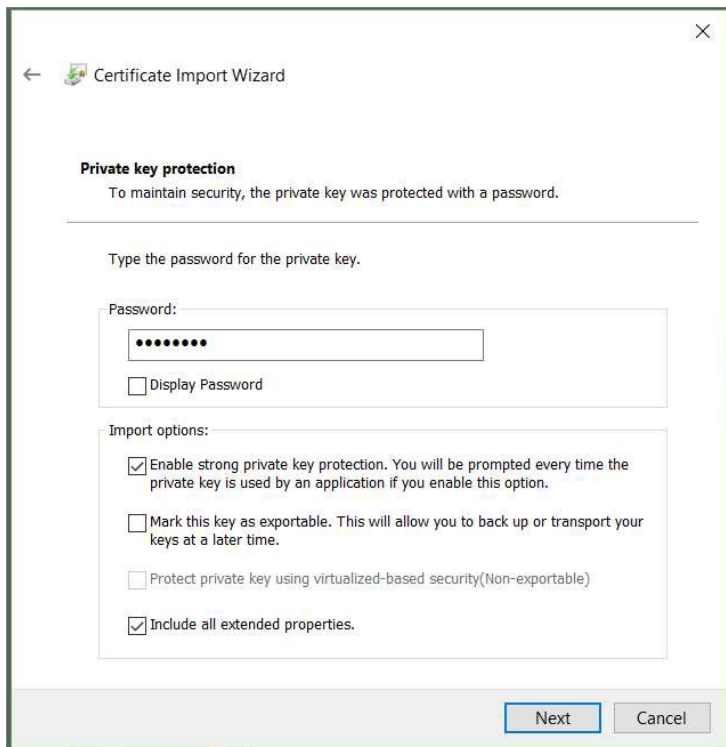
- Select Current User and then Next

The following window will appear:

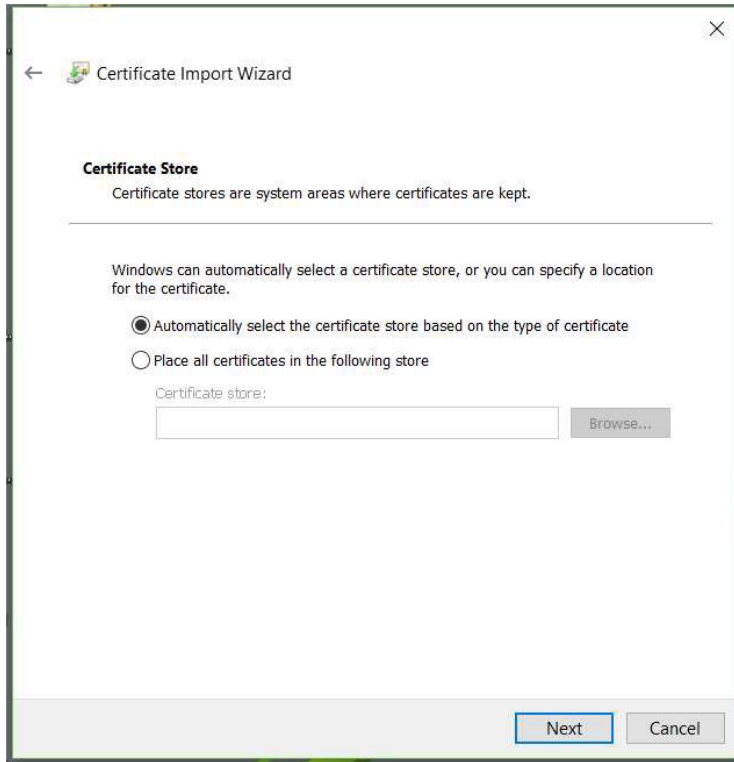


- Click Next

The following window will appear:

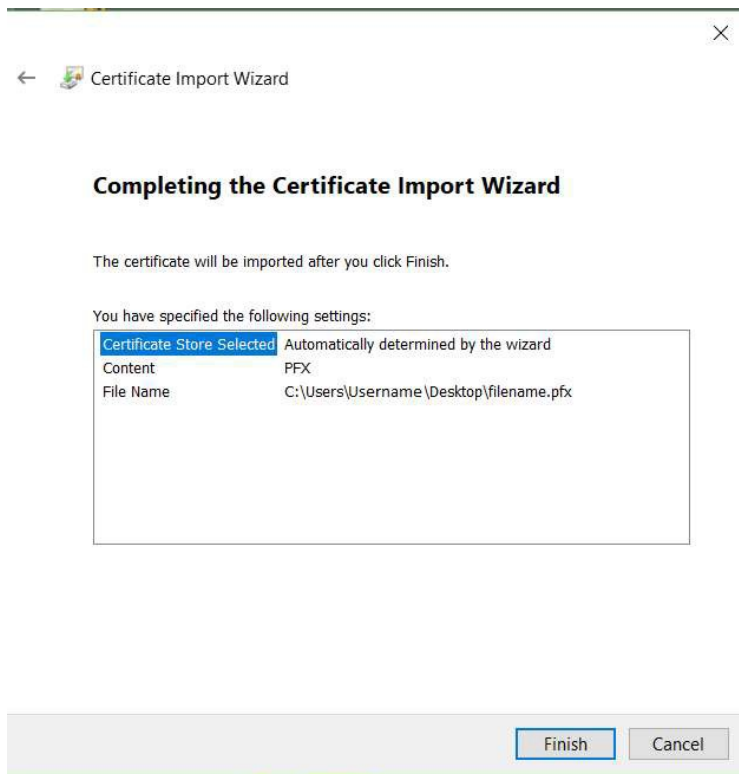


- Enter the password you received by Text Message (SMS) from Swedish Maritime Administration.
- Check **“Enable strong private key protection. You will be prompted every time the private key is used by an application if you enable this option”**, according to the window above.
- Click Next.



- Leave the preselected option **“Automatically select the certificate store based on the type of certificate”**. This will allow your browser to find the correct certificate when visiting Swedish Maritime Administration’s e-services.
- Click Next.

The following window will appear:



- Click Finish.

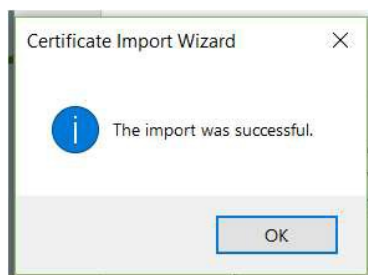
The following window will appear:



- Click OK.

After clicking OK in the above message box, Microsoft Edge will ask for the private key for this certificate every time the certificate is to be used. You might experience a following security warning when finishing the certificate installation. You need to click Allow.

The following confirmation will appear:



- Click OK

You have now completed the installation of your Swedish Maritime Administration security certificate.

- Make sure to save the certificate file that you received from Swedish Maritime Administration to a secure location for future use. I.e. for backup reasons and for installation on other devices. Keep the certificate and the password separated.
- Done!