

NSA Passage Plan

Navigational Ship Assistance (NSA) in Gothenburg

Draft

Upd: 2024-04-10 (version 0.17)

Pending:

- TS Approval
- Tel no to Remote Pilot

Pilot Area Gothenburg

VHF Channels

Remote Pilot on duty: Ch88

VTS Göteborg: Ch13

Göteborg Pilot: Ch11

Port Control + Skarvik Oil Harbour: Ch12

Torshammen: Ch17

Tug operations: Ch08, Ch69, Ch15

Phone numbers

Remote Pilot on duty: +46-NNNNNNNNNN

Port Control: +46-31-368 75 15

Pilot: +46-771-63 06 70

Svitzer (tugs): +46-31-10 97 10

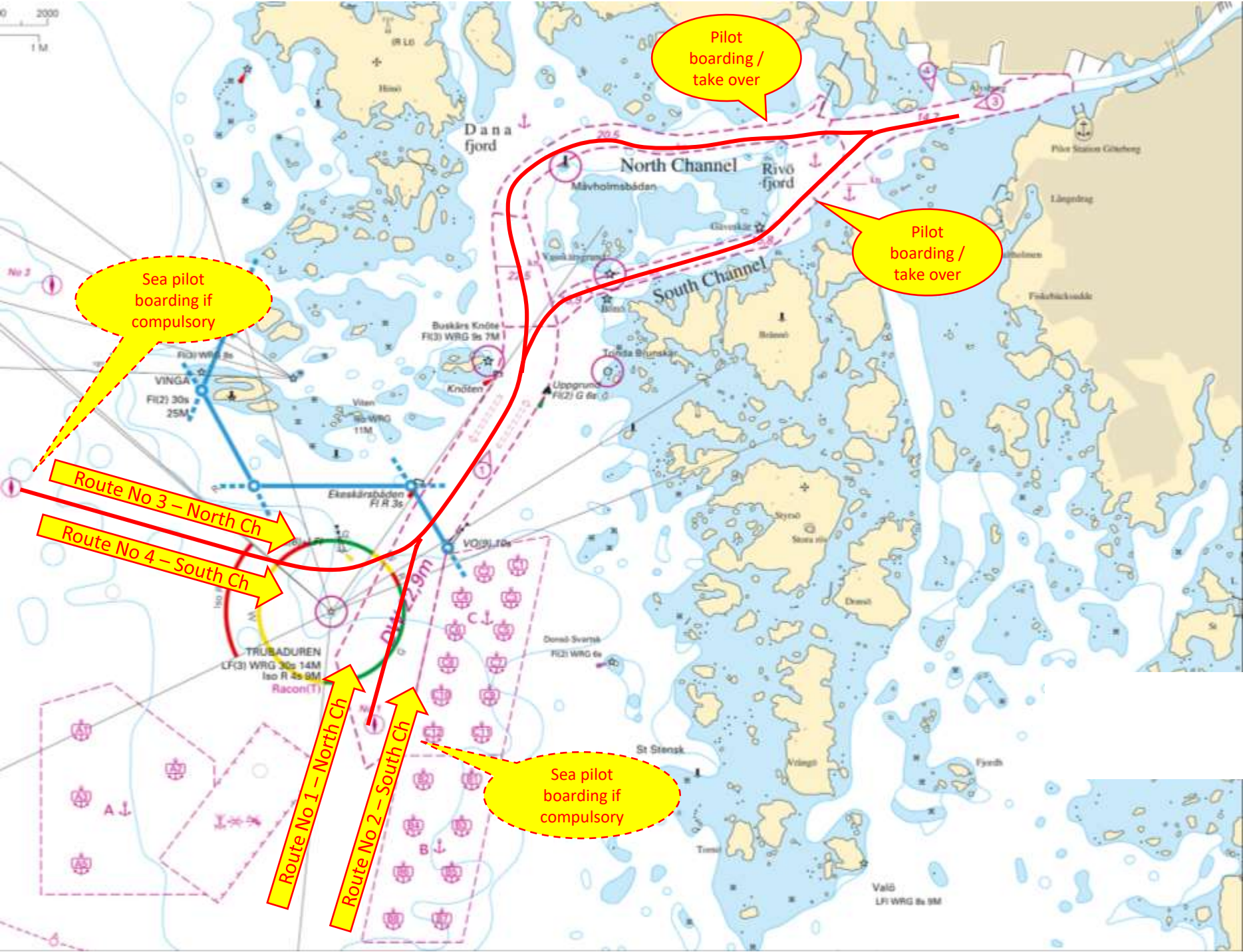
Klippan Boatmen (linesmen): +46-31-14 46 77

UKC in fairway: 0,7m / at berth: 0,5m

www.sjofartsverket.se/gbg (nautical information, official routes, geographical names, etc)

www.portgot.se (local regulations, list of berths, tug regulations, weather forecast, etc)

Inbound



VHF Ch 13

VTS Göteborg – Remote Pilot
for <Vessel name>
Entering the area from west.
Destination berth XXX.
Draft X.x metres.
Assisted by Remote Pilot.

110

NSA Link

<Vessel name> – Remote Pilot Gothenburg
Welcome, I will be your Remote Pilot today.
Please load route no 4 and confirm NSA
Passage Plan.

Sea pilot
boarding if
compulsory

100

Pilot Boarding #2

Nr A1

Nr A2

INBOUND from West

15 min before entering the VTS area, connect with Remote Pilot.

NSA MPX

- Pilot Card
- Passage Plan – route – berth
- Weather
- Restrictions – draft - tug
- Mooring Plan, connections, side alongside

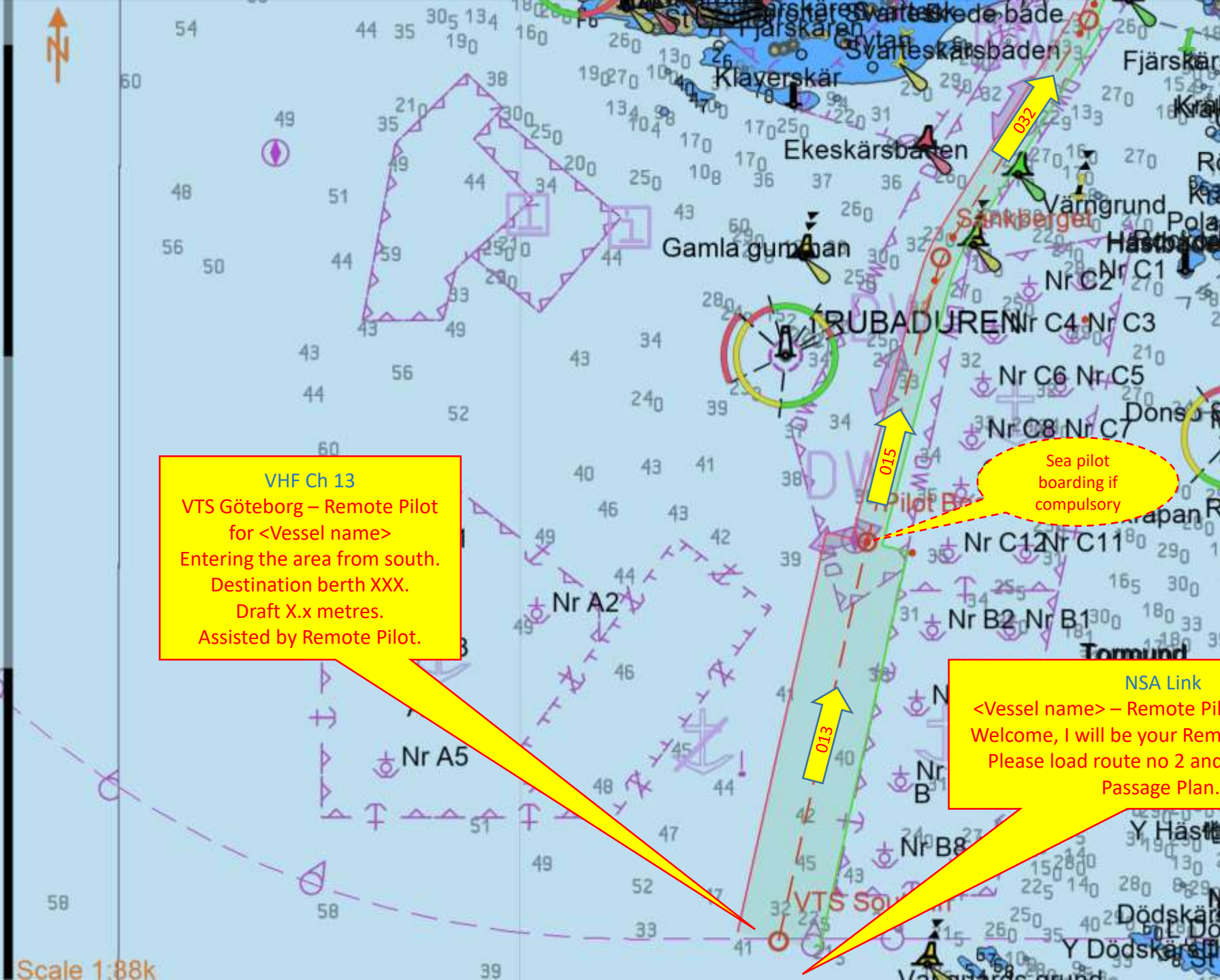
Entering the area: Remote Pilot will report your vessel to VTS Göteborg.

Prepare vessel to board Sea/Docking Pilot.

Remote Pilot to confirm:

- Pilot boarding position and ETA
- Pilot boarding arrangement
- Pilot boarding speed and course

During NSA test period, compulsory Sea Pilot to be boarded as per regulations.



INBOUND from South

15 min before entering the VTS area, connect with Remote Pilot.

NSA MPX

- Pilot Card
- Passage Plan – route – berth
- Weather
- Restrictions – draft - tug
- Mooring Plan, connections, side alongside

Entering the area: Remote Pilot will report your vessel to VTS Göteborg.

Prepare vessel to board Sea/Docking Pilot.
Remote Pilot to confirm:

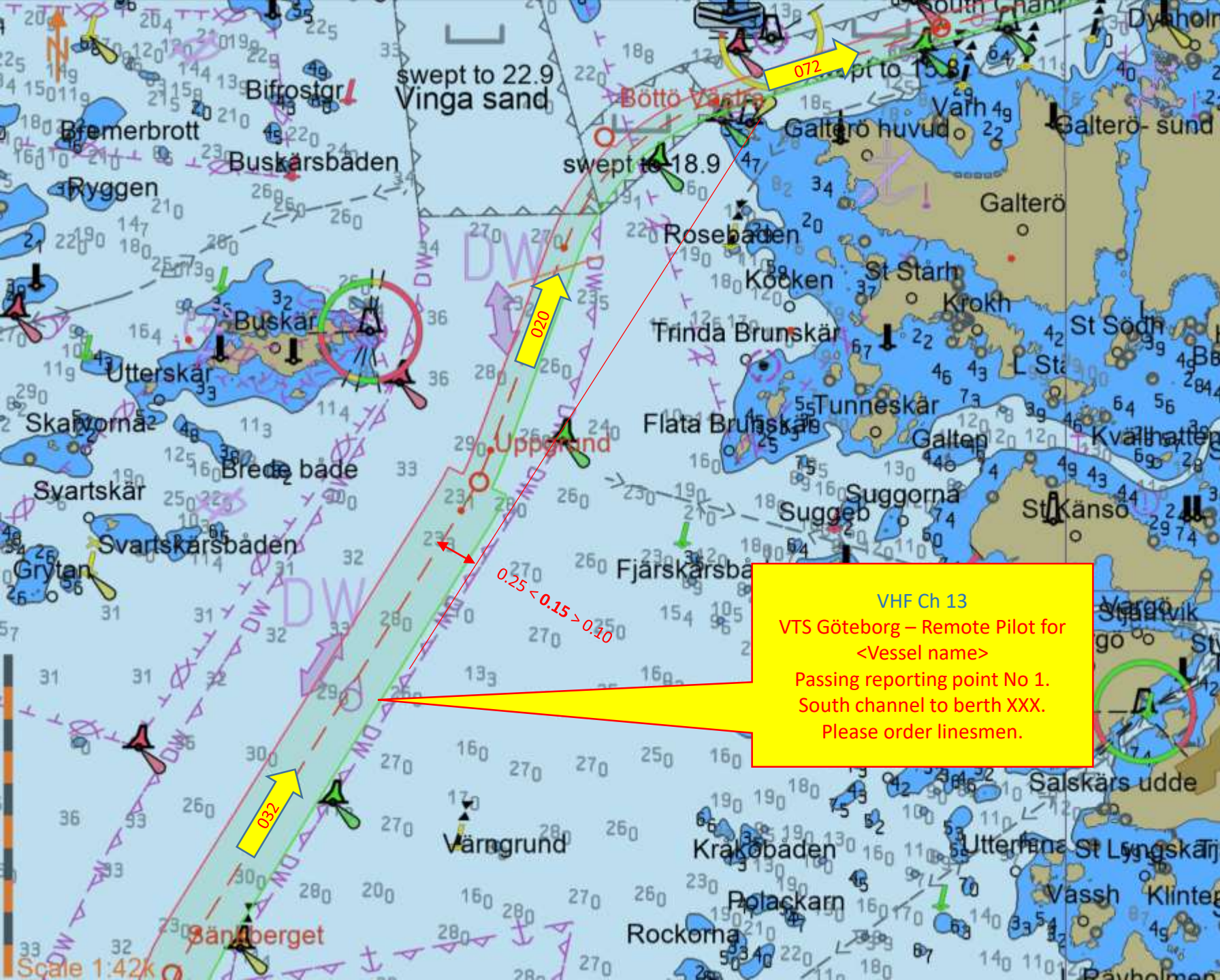
- Pilot boarding position and ETA
- Pilot boarding arrangement
- Pilot boarding speed and course

During NSA test period, compulsory Sea Pilot to be boarded as per regulations.

NSA Link
 <Vessel name> – Remote Pilot Gothenburg
 Welcome, I will be your Remote Pilot today.
 Please load route no 2 and confirm NSA
 Passage Plan.

VHF Ch 13
 VTS Göteborg – Remote Pilot
 for <Vessel name>
 Entering the area from south.
 Destination berth XXX.
 Draft X.x metres.
 Assisted by Remote Pilot.

Sea pilot
 boarding if
 compulsory



VHF Ch 13
 VTS Göteborg – Remote Pilot for
 <Vessel name>
 Passing reporting point No 1.
 South channel to berth XXX.
 Please order linesmen.

INBOUND via South Channel

Courses: 032 – 020 – 072 – 074 – 047 – 078

Reporting point no 1: Remote Pilot will report your vessel to VTS Göteborg. Route / Destination / Linesmen

Depending of traffic situation: You or meeting vessels may change choice of route

No meetings of big vessels in the turns – adjust speed.

Check traffic from fairway N. Vinga.

Current may be significant over Vinga Sand up to Brandnäs.

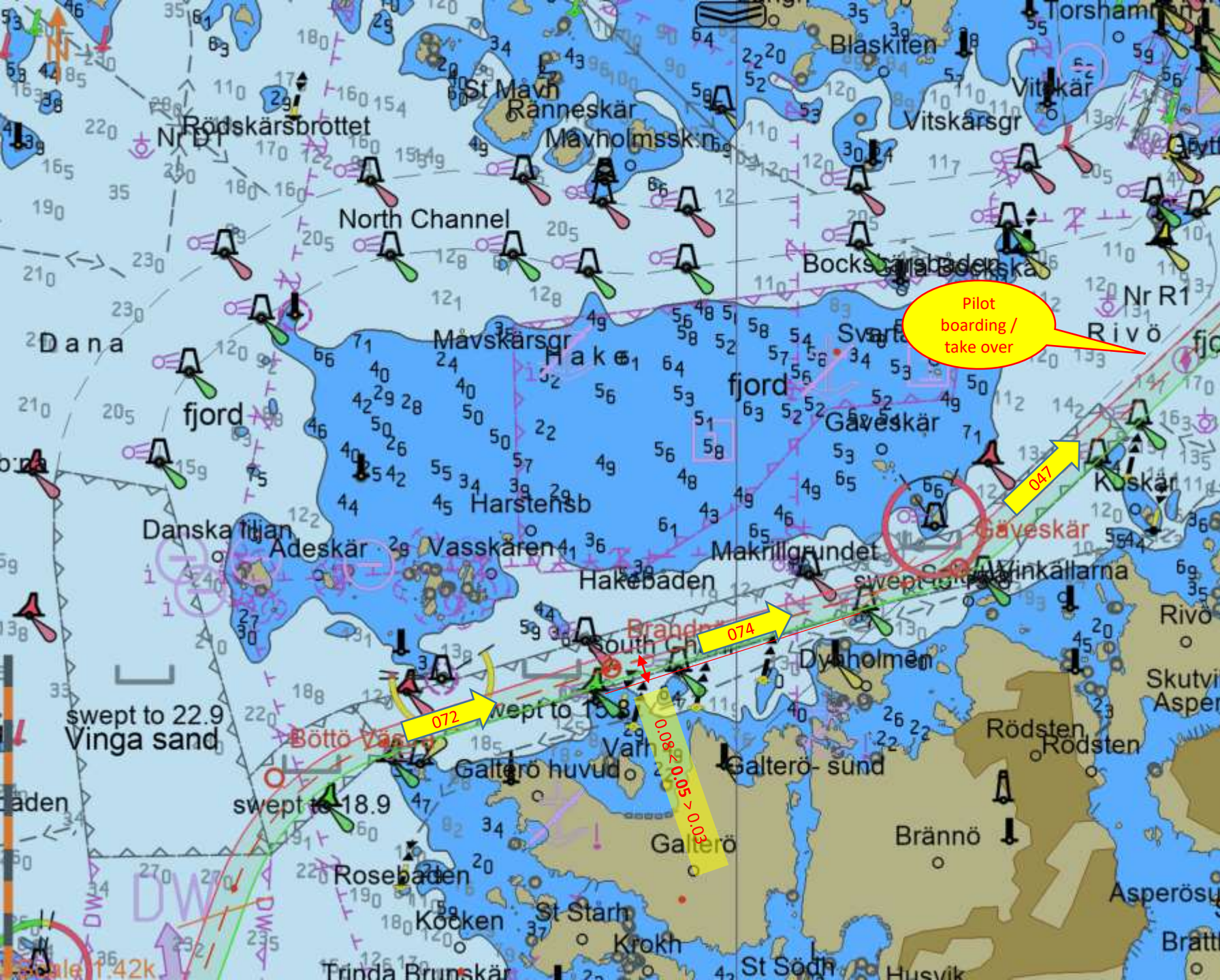
WOL: Böttö (EBL 071 over Galterö huvud) / (Trinda Brunskär = centre of turn R=0,8')

WOL: Gäveskär (Torshamns pier over Gäveskär)

Leading line = Limitation line for deep draft vessels (not the centre of fairway). Leading line may be lit via VTS Göteborg.

Rivö: Slow speed (10 knots) if bunker operations and/or sensitive operations at Torshamnen

Anchor positions at Rivö South and North



INBOUND via South Channel

Courses: 032 – 020 – 072 – 074 – 047 – 078

Reporting point no 1: Route / Destination / Linesmen

Depending of traffic situation: You or meeting vessels may change choice of route

No meetings of big vessels in the turns – adjust speed.

Check traffic from fairway N. Vinga.

Current may be significant over Vinga Sand up to Brandnäs.

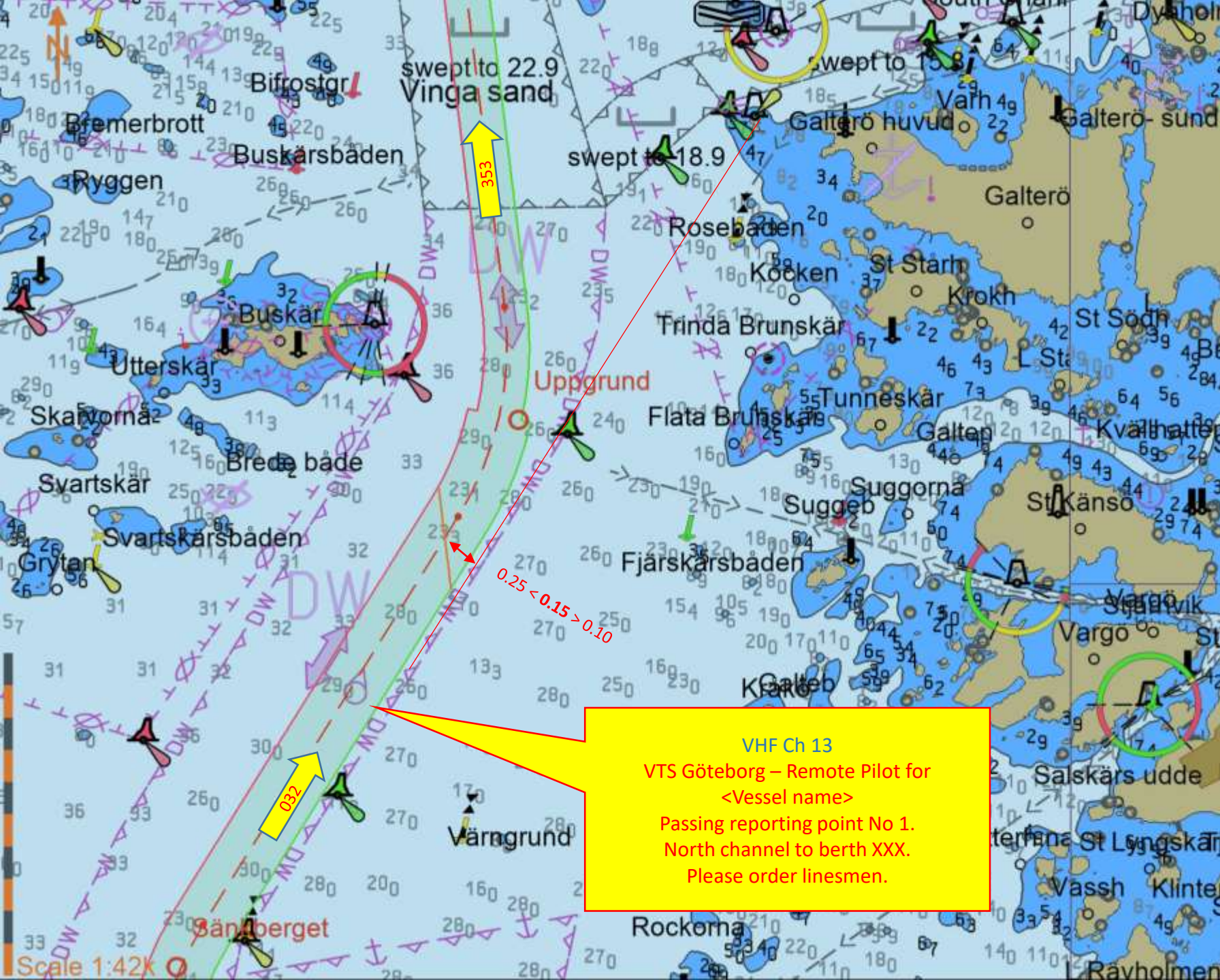
WOL: Böttö (EBL 071 over Galterö huvud) / (Trinda Brunsjär = centre of turn R=0,8')

WOL: Gäveskär (Torshamns pier over Gäveskär)

Leading line = Limitation line for deep draft vessels (not the centre of fairway). Leading line may be lit via VTS Göteborg.

Rivö: Slow speed (10 knots) if bunker operations and/or sensitive operations at Torshamnen

Anchor positions at Rivö South and North



VHF Ch 13
 VTS Göteborg – Remote Pilot for
 <vessel name>
 Passing reporting point No 1.
 North channel to berth XXX.
 Please order linesmen.

INBOUND via North Channel

Courses: 032 – 353 – 060 – 100 – 083

Reporting point no 1: Remote Pilot will report your vessel to VTS Göteborg. Route / Destination / Linesmen

Depending of traffic situation: You or meeting vessels may change choice of route

No meetings of big vessels in the turns – adjust speed.

Outbound vessels in South Channel = right of way. Adjust speed. If meeting SB/SB – Radio contact ship to ship (Ch13) + no following vessels.

Check traffic from fairway N. Vinga.

WOL: Knöten (EBL 355 over Knöten or later depending on meeting vessels)

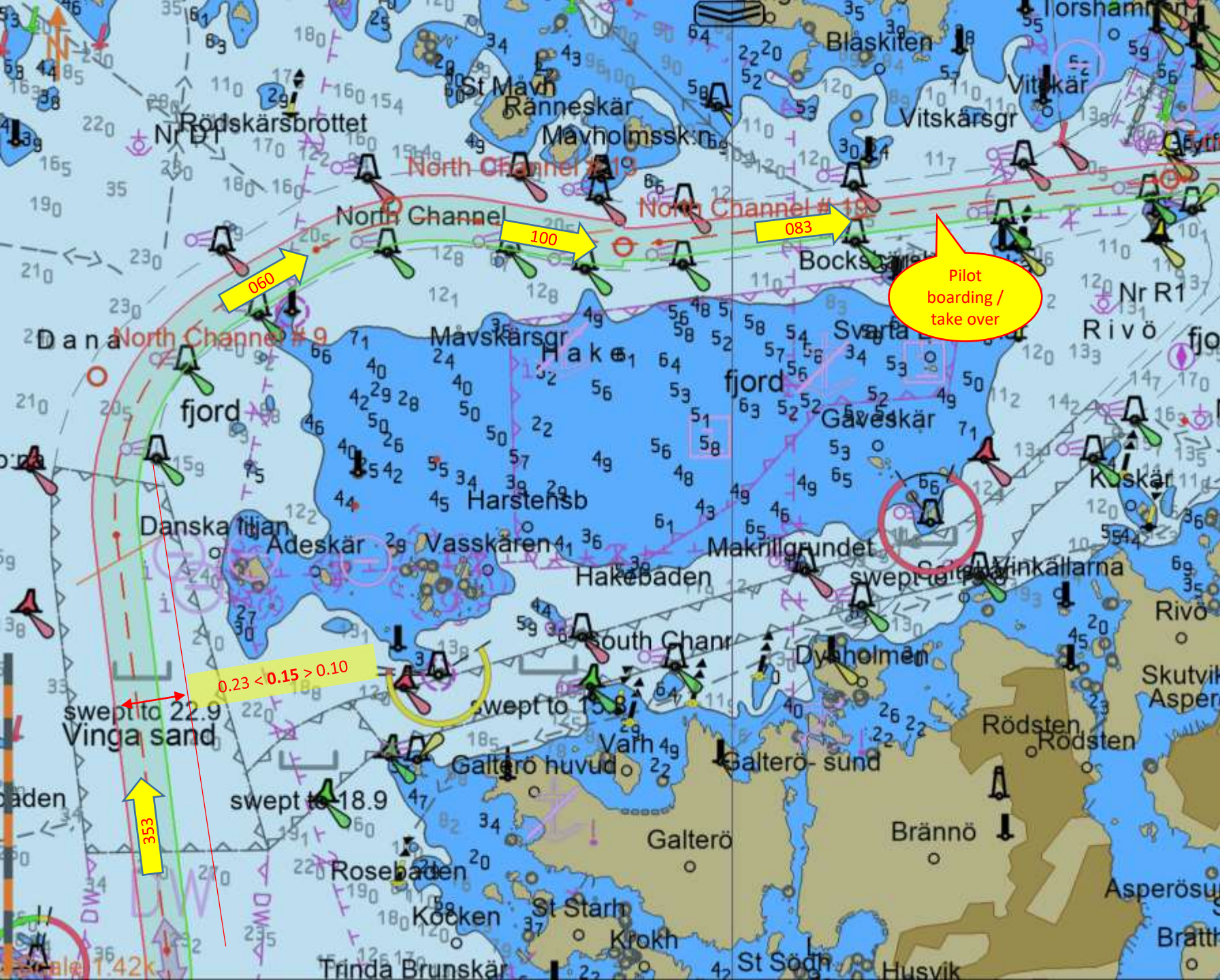
WOL: Danska Illjan (EBL 060 over Måvholmsskären) / (Vasskären North = centre of turn R=1,0') / Mid turn check: Course 027 when EBL 060 passing Måvholmsbådan Racon.

Anchor position at Dana (Rossbåden 270/0,35')

Current may be significant between Måvholmsbådan and Torshammen.

WOL: Måvholmsbådan (EBL 100 over No13)

Torshammen: Slow speed (10 knots) if bunker operations Rivö and/or sensitive operations at Torshammen.



INBOUND via North Channel

Courses: 032 – 353 – 060 – 100 – 083

Reporting point no 1: Route / Destination / Linesmen

Depending of traffic situation: You or meeting vessels may change choice of route

No meetings of big vessels in the turns – adjust speed.

Outbound vessels in South Channel = right of way. Adjust speed. If meeting SB/SB – Radio contact ship to ship (Ch13) + no following vessels.

Check traffic from fairway N. Vinga.

WOL: Knöten (EBL 355 over Knöten or later depending on meeting vessels)

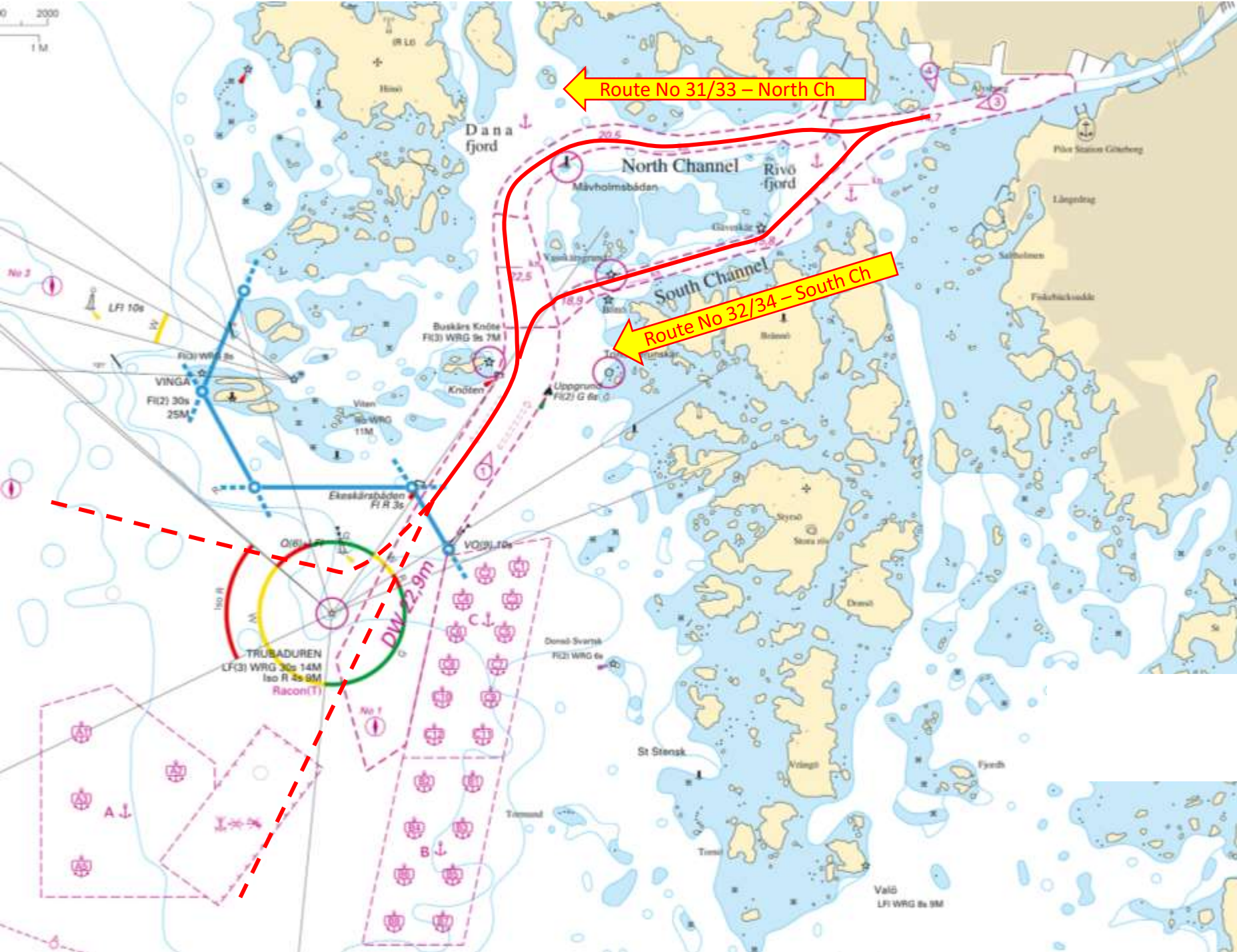
WOL: Danska liljan (EBL 060 over Måvholmsskären) / (Vasskären North = centre of turn R=1,0') / Mid turn check: Course 027 when EBL 060 passing Måvholmsbådan Racon.

Anchor position at Dana (Rossbåden 270/0,35')

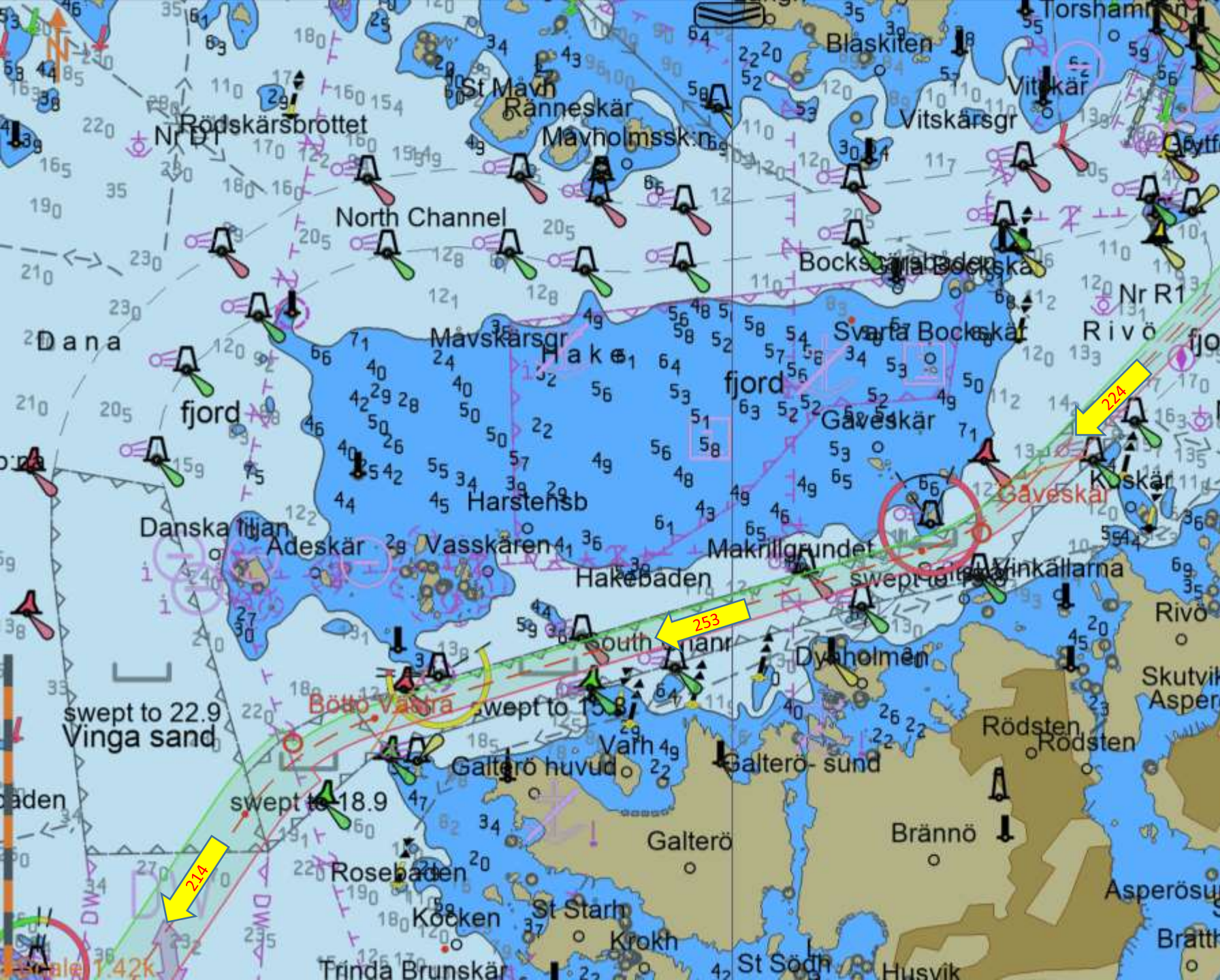
Current may be significant between Måvholmsskären and Torshammen.

WOL: Måvholmsskären (EBL 100 over No13)

Torshammen: Slow speed (10 knots) if bunker operations Rivö and/or sensitive operations at Torshammen.



Outbound



OUTBOUND via South Channel

Courses: 258 – 224 – 253 – 214

No meetings of big vessels in the turns – adjust speed.

Rivö: Slow speed (10 knots) if bunker operations and/or sensitive operations at Torshamnen

Anchor positions at Rivö South and North

Leading line = Limitation line for deep draft vessels (not the centre of fairway). Leading line may be lit via VTS Göteborg.

WOL: Gäveskär (EBL 253 over Gäveskär)

Knöten over Brandnäs = free of shallow water south Gäveskär.

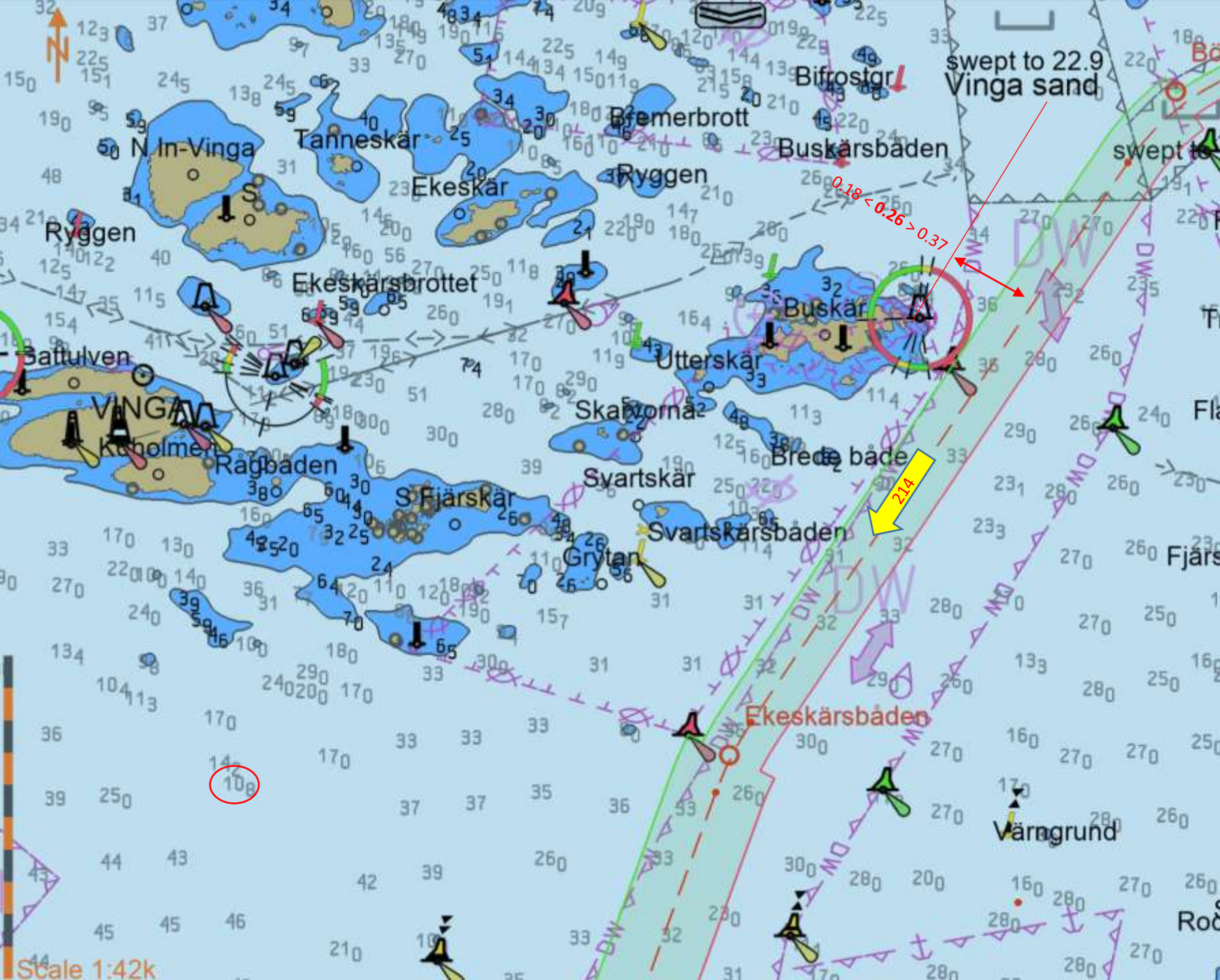
Current may be significant after Brandnäs out to Vinga Sand.

Outbound vessels from North Channel = Right of way. Check traffic from fairway N. Vinga.

WOL: Trubaduren over Böttö Västra (green buoy) in bearing 215 / (Trinda Brunskär = centre of turn R=0,9')

Check traffic situation for a good plan out of traffic area. Option: Inform VTS Göteborg

If westbound after Ekeskärsbåden: Note shallow water (10m), keep 1M off Vinga land.



OUTBOUND via South Channel

Courses: 258 – 224 – 253 – 214

No meetings of big vessels in the turns – adjust speed.

Rivö: Slow speed (10 knots) if bunker operations and/or sensitive operations at Torshamnen

Anchor positions at Rivö South and North

Leading line = Limitation line for deep draft vessels (not the centre of fairway). Leading line may be lit via VTS Göteborg.

WOL: Gäveskär (EBL 253 over Gäveskär)

Knöten over Brandnäs = free of shallow water south Gäveskär.

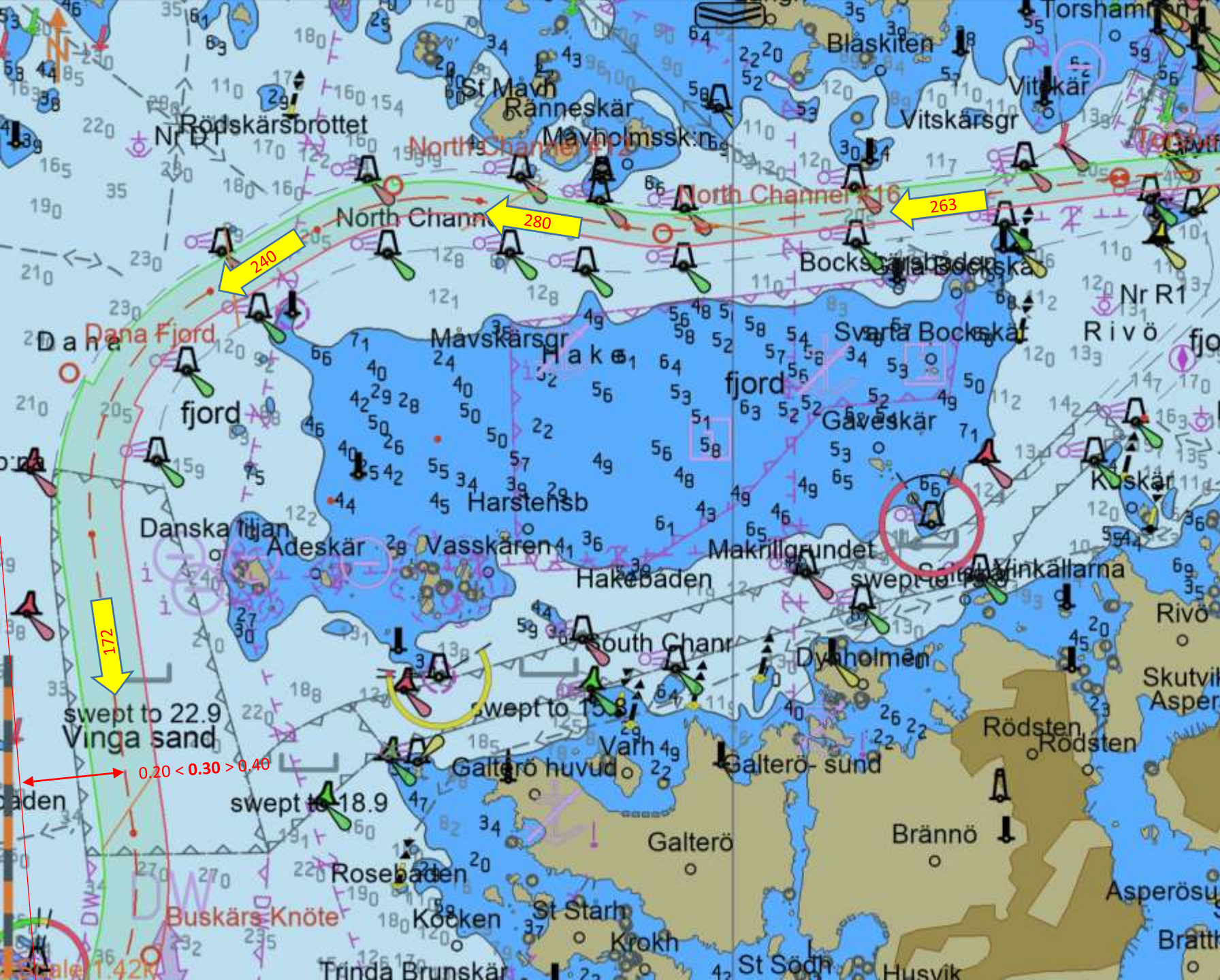
Current may be significant after Brandnäs out to Vinga Sand.

Outbound vessels from North Channel = Right of way. Check traffic from fairway N. Vinga.

WOL: Trubaduren over Böttö Västra (green buoy) in bearing 215 / (Trinda Brunskär = centre of turn R=0,9')

Check traffic situation for a good plan out of traffic area. Option: Inform VTS Göteborg

If westbound after Ekeskärsbåden: Note shallow water (10m), keep 1M off Vinga land.



OUTBOUND via North Channel

Courses: 258 – 265 – 263 - 280 – 240 – 172 – 214

No meetings of big vessels in the turns – adjust speed.

Draft less than 10m, possibility to navigate outside fairway in emergency.

Cable between Bocken and Dynan.

Rivö: Slow speed (10 knots) if bunker operations Rivö and/or sensitive operations at Torshamnen.

Current may be significant between Torshamnen and Måvholmsbådan.

WOL: Passing Skäddan

WOL: St Måvholmen (EBL 238 over No13)

Anchor position at Dana (Rossbåden 270/0,35´)

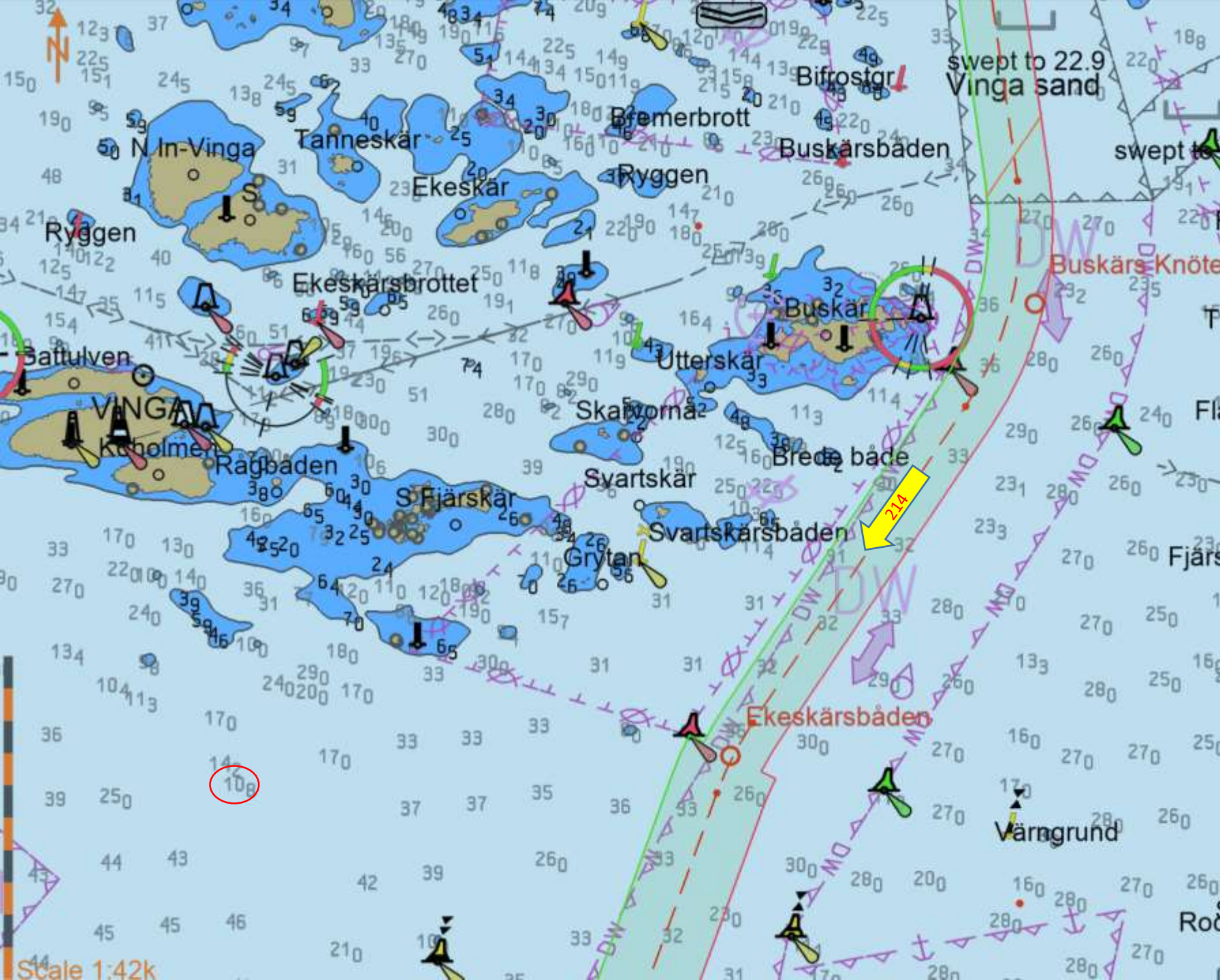
WOL: Måvholmsbådan (No8 over No9) / (EBL 175 over Danska Liljan)

Check traffic from fairway N. Vinga.

WOL: Knöten (EBL 215 over Knöten lighthouse)

Check traffic situation for a good plan out of traffic area. Option: Inform VTS Göteborg.

If westbound after Ekeskärsbåden: Note shallow water (10m), keep 1M off Vinga land.



OUTBOUND via North Channel

Courses: 258 – 265 – 263 - 280 – 240 – 172 – 214

No meetings of big vessels in the turns – adjust speed.

Draft less than 10m, possibility to navigate outside fairway in emergency.

Cable between Bocken and Dynan.

Rivö: Slow speed (10 knots) if bunker operations Rivö and/or sensitive operations at Torshamnen.

Current may be significant between Torshamnen and Mävholmsbådan.

WOL: Passing Skäddan

WOL: St Mävholmen (EBL 238 over No13)

Anchor position at Dana (Rossbåden 270/0,35')

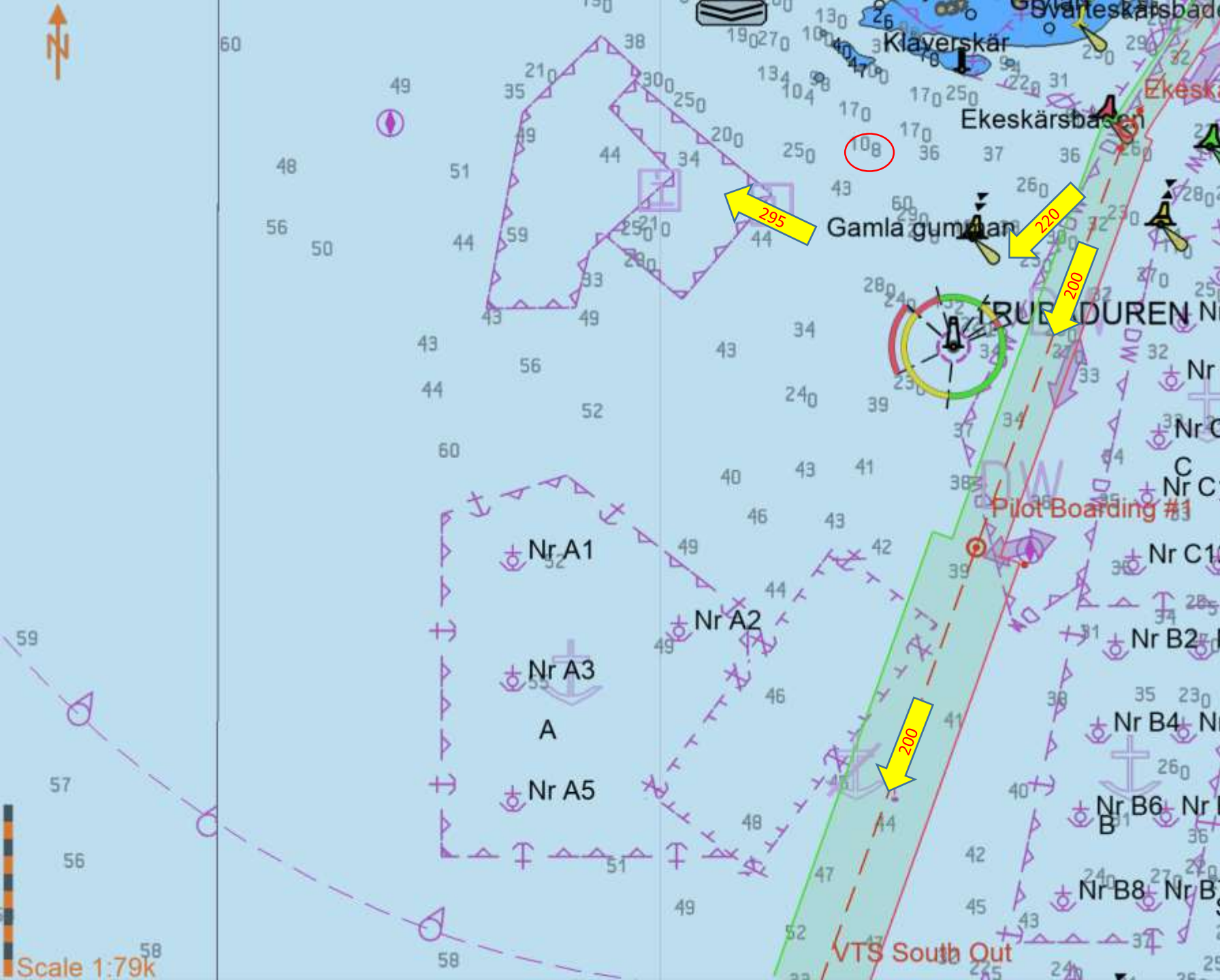
WOL: Mävholmsbådan (No8 over No9) / (EBL 175 over Danska Liljan)

Check traffic from fairway N. Vinga.

WOL: Knöten (EBL 215 over Knöten lighthouse)

Check traffic situation for a good plan out of traffic area. Option: Inform VTS Göteborg.

If westbound after Ekeskårsbåden: Note shallow water (10m), keep 1M off Vinga land.



OUTBOUND leaving the area

- Watch VHF Ch 13
- Observe traffic to/from anchorage areas and the port
- Make ship-to-ship agreement (VHF Ch 13)
- Keep clear of shallow water SW of Klåveskär and Vinga

Page 15