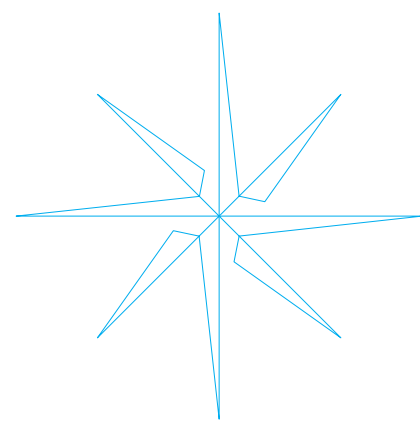


PASSAGE PLAN

PORTS OF GOTLAND

Slite-Kappelshamn-Klintehamn-Strå



East Coast Pilot

VHF CH 10

Not for navigation

Phone: +46 (0)771 63 06 45

E-mail: eastcoastpilot@sjofartsverket.se

ETA Procedures

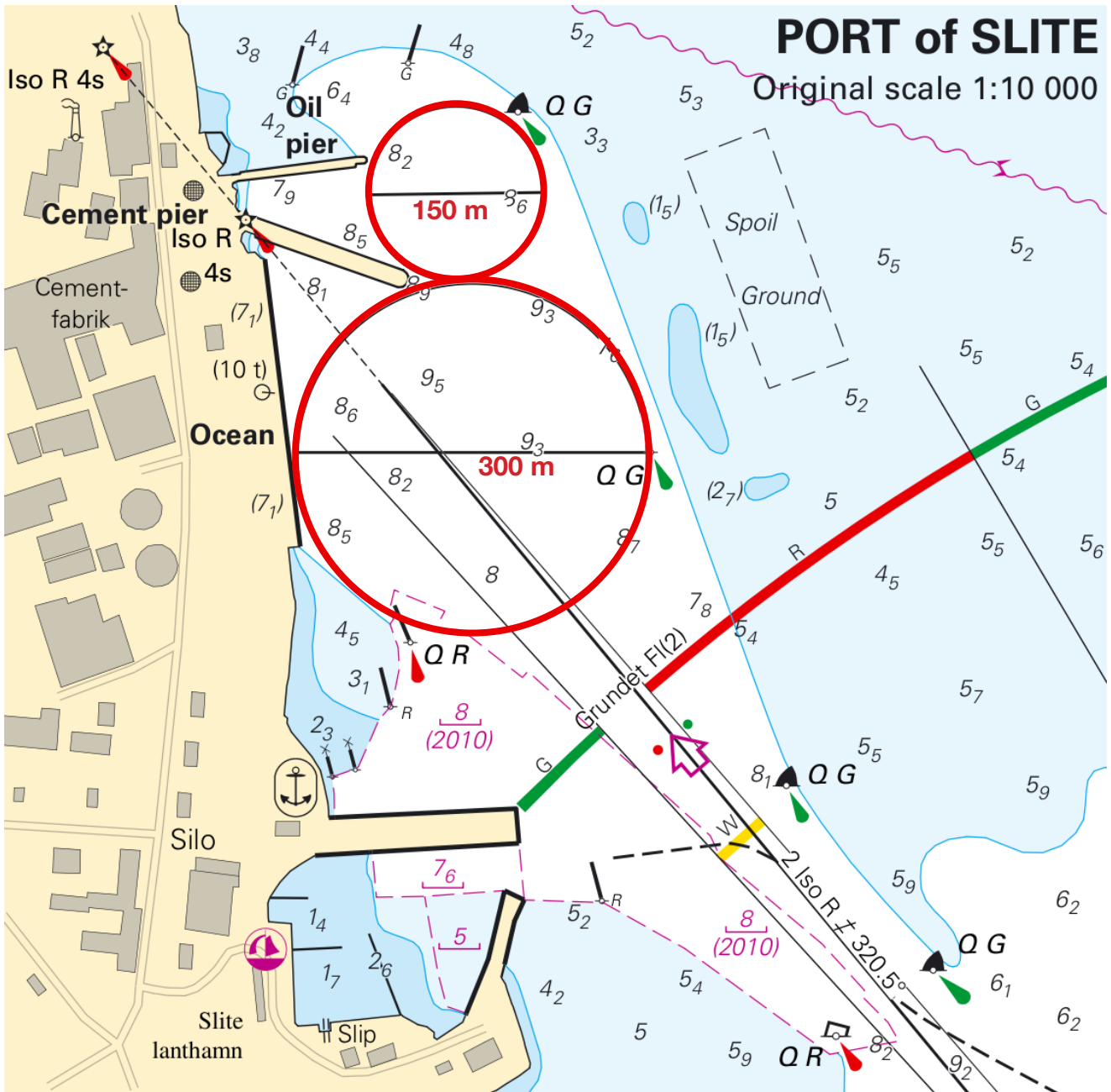
- 24 hours before ETA Pilot station – give preliminary ETA to East Coast Pilot
- 5 hours before ETA Pilot station – Confirm ETA
- 1 hour before ETA Pilot station – Confirm ETA
- Order changes less than 5 hours advance are subject to additional fees

Version 1:1 2021



SWEDISH MARITIME
ADMINISTRATION

Port of Slite

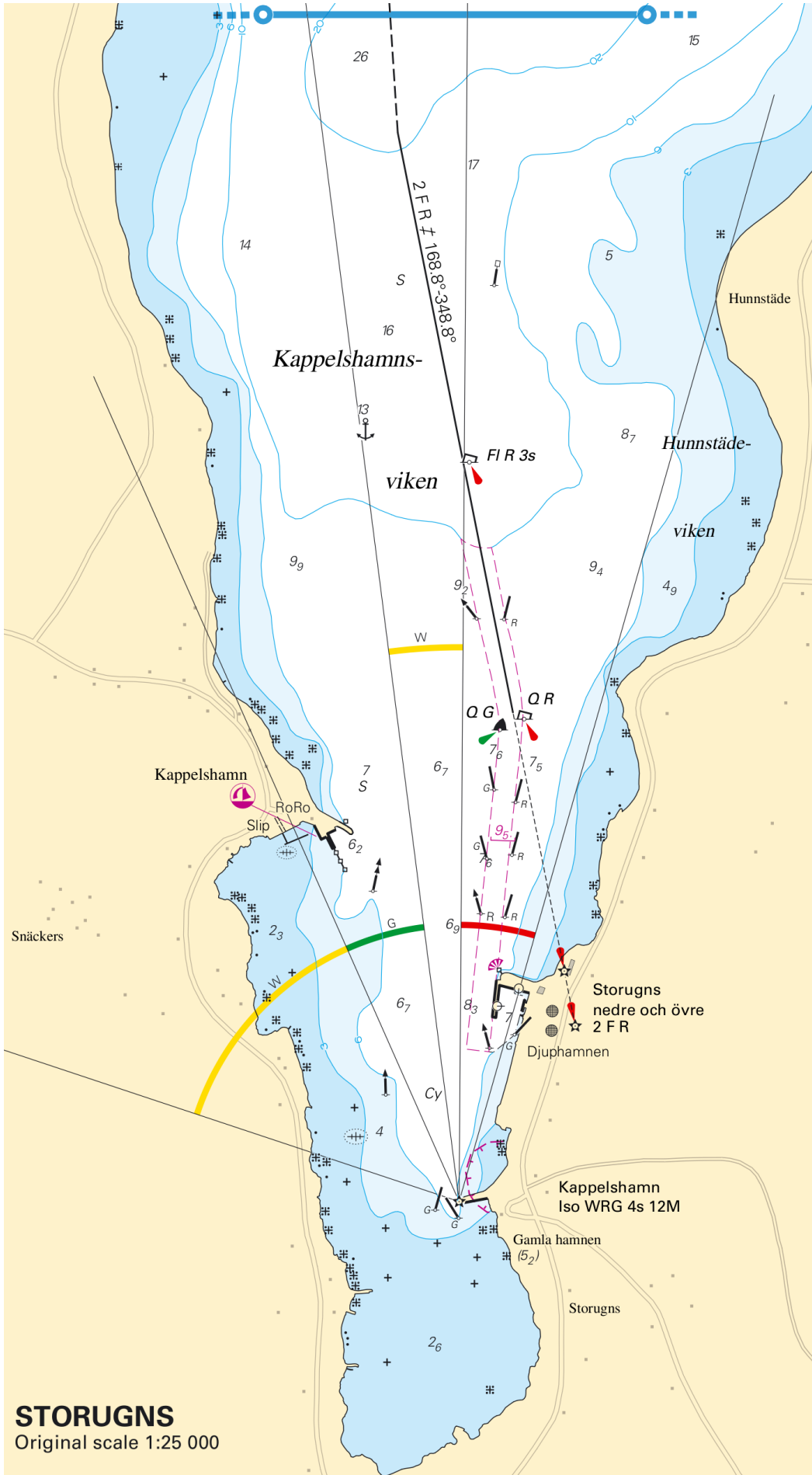


Berth	Draught	Depth	Length	Max length	Bearing	Notes
Oil Pier	6,8 m	7,9 m	100 m	100 m	083/263	On arrival no vessel on Cement North
Cement North	7,5 m	8,0 m	140 m	130 m	109/289	
Cement South	7,5 m	8,0 m	130 m	130 m	109/289	
Ocean Quay	6,6 m	7,1 m	250 m	160 m	173/353	Vessels with LOA>160 m ¹
Apotek North	7,5 m	8,0 m	150 m	140 m	087/267	
Apotek South	7,1 m	7,6 m	125 m	100 m	087/267	
Krokiga kajen	4,5 m	5,0 m	110 m	50 m	013/193	

Distance pilot boarding position to berth: 3,3NM

¹ Vessels with a LOA exceeding 160 meters are requested to present ships data concerning rudders, propellers, bow thrusters and manoeuvrability 30 days prior to arrival for evaluation by Swedish Maritime Administration.

Storungs/Kappelshamn

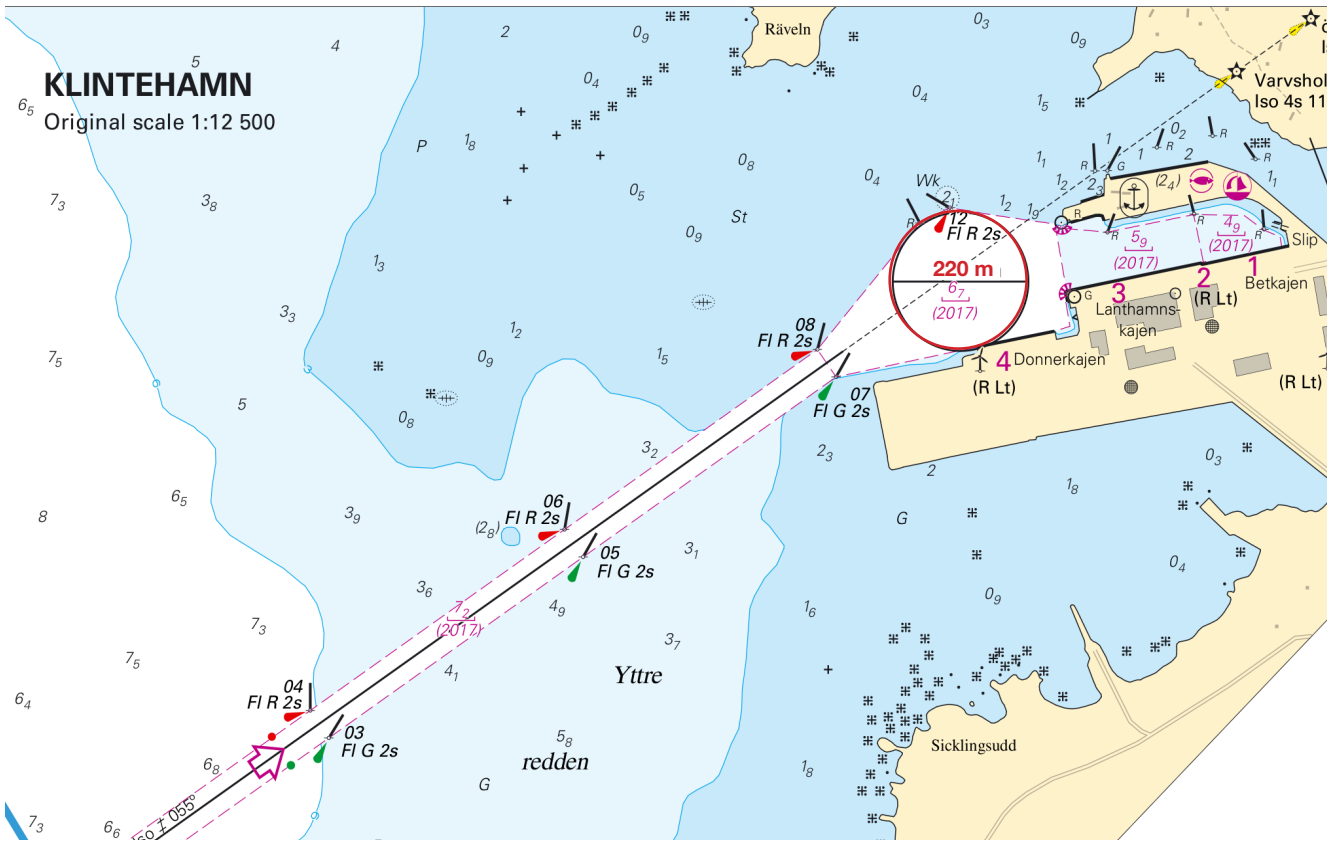


Enlarged scale

Berth	Draught	Depth	Length	Max length	Bearing	Notes
1	8,7 m	9,4 m	170 m	167 m	006/186	Vessels exceeding 160 m LOA max 10 m/s.
2	6,5 m	7,0 m	115 m	110 m	006/186	Vessels of max. dimensions for berth, wind not to exceed 10 m/s.
3	6,5 m	7,0 m	105 m	100 m	104/284	Vessels of max. dimensions for berth, wind not to exceed 10 m/s. Cat 2 vessels max. LOA 90m.
4	6,5 m	7,0 m	40 m	90 m	014/194	Vessels of max. dimensions for berth, wind not to exceed 10 m/s.
Ro-Ro	6,2 m		150 m	170 m	154/334	

Distance pilot boarding position to berth: 4,2 NM

Klintehamn



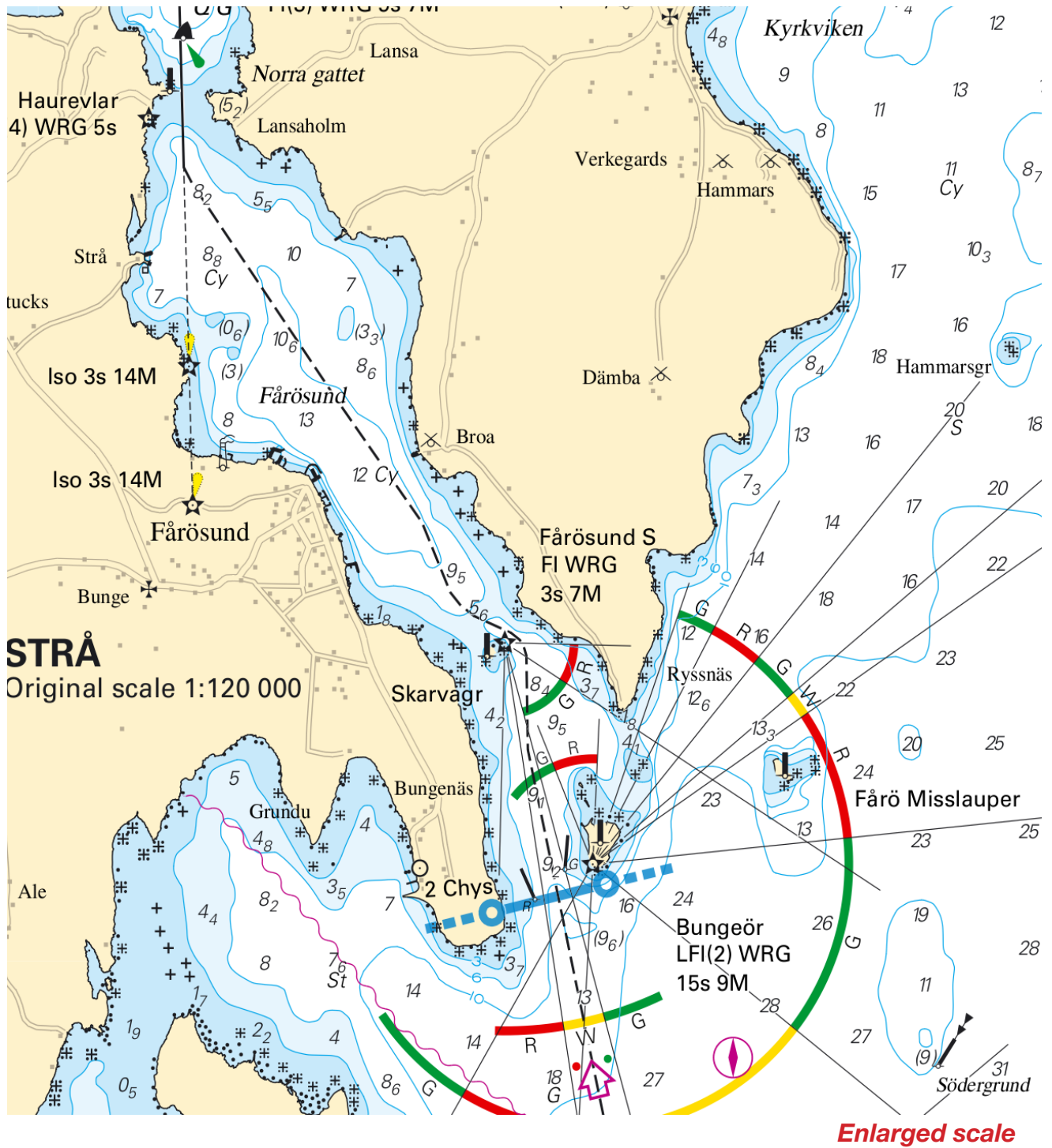
Reduced scale

Berth	Draught	Depth	Length	Max length	Bearing	Notes
1	4,4 m	4,9 m	130 m	115 m	078/258	Max. wind 6 m/s
2-3	5,4 m	5,9 m	225 m	115 m	078/258	
4	6,0 m	6,7 m	128 m	115 m	078/258	

Note: Weather restrictions: Vessels <100 m 12 m/s, Vessels >100 m 9 m/s and visibility >2 NM
 Passing moored vessels max. 6 m/s. For all berths: Max. breadth 16,5 m.

Distance pilot boarding position to berth: 2,6 NM.

Strå



Berth	Draught	Depth	Length	Max length	Bearing	Notes
1	5,0 m	5,5 m	50 m	118 m	023/203	Headline and stern line from shore
Pier	5,0 m	5,5 m	88 m	80 m	074/254	

Our pilots are your guarantee for a safe voyage

We provide harbour pilotage in all Swedish ports as well as deep sea pilotage services in the Baltic Sea. Our certified pilots provide a high quality, safe and efficient pilotage service in order to minimize risks for the shipping industry.

The Swedish coast is divided into nine pilot areas; Luleå, Gävle, Stockholm, Södertälje, Kalmar, Malmö, Göteborg, Marstrand and Vänern. VTS operators will provide an update on the current traffic and weather conditions as you report.

Deep Sea Pilotage in the Baltic Sea

The Swedish Maritime Administration (SMA), ISO 9001-certified since 2003, provides deep sea pilotage in the water area between Sweden and Denmark and in the Baltic Sea.

Swedish pilots, employed by SMA, provide a high quality, safe and efficient pilotage service in order to minimize risks for the shipping industry.

SMA Pilots have knowledge of all the TSS in the area, knowledge and experience of ice conditions and will provide information about weather, water levels and ice conditions.

Deep sea pilotage should be ordered 24 hours in advance. To order deep sea pilotage services, please contact us by e-mail or telephone:

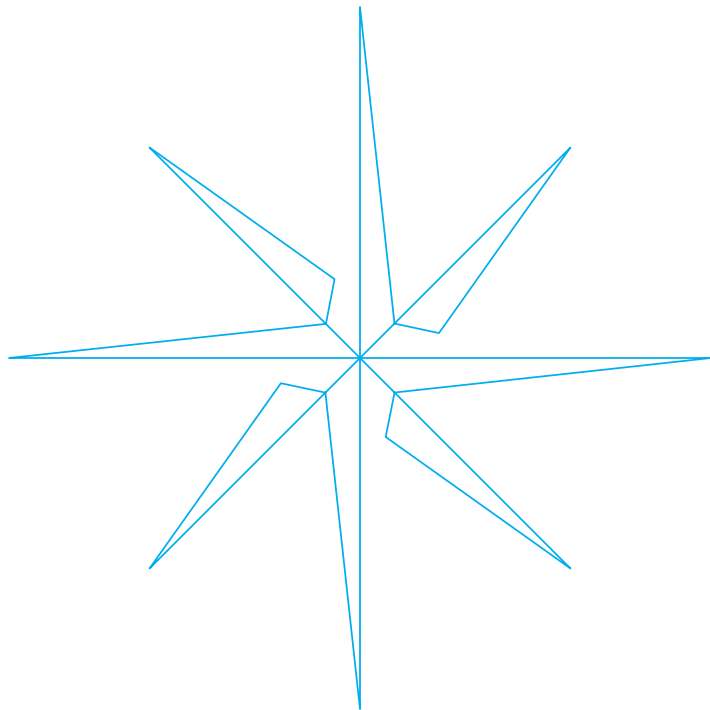
South coast pilot: Telephone: +46 (0)771 63 06 80 E-mail: southcoastpilot@sjofartsverket.se

We provide deep sea pilotage to and from all Swedish ports, to all ports in the Baltic Sea area, and inbound to the Baltic Sea area.

All Swedish deep sea pilots are certified red card pilots and they completed a IMO-based training program following resolution A.480. These pilots are all experienced captains and are usually working as harbour pilots. The presence of our certified red card pilots will improve the overall safety for your vessel when operating in the Baltic Sea area.

The edition may contain outdated information on benchmarks and restrictions. Please note that it is always the electronic version that applies.

<http://www.sjofartsverket.se/sv/Sjofart/Lotsning/Lotsomraden/Lotsomrade-Kalmar/Rutter-Fardplaner/>



SWEDISH MARITIME
ADMINISTRATION