

PASSAGE PLAN

FLIVIK

Not for navigation

FLIVIK PILOTS

VHF channel 13

Pilot boat: VHF channel 13 and 16

Phone: +46-771-630 690

E-mail: southcoastpilot@sjofartsverket.se

- 24 hours before ETA Flivik pilot station, give preliminary ETA to Southcoastpilot.
- 5/1 hours before ETA Flivik pilot station; confirmation of ETA to Flivik pilots.
- Order changes less than five hours in advance and cancellation less than three hours in advance will be charged.

www.sjofartsverket.se

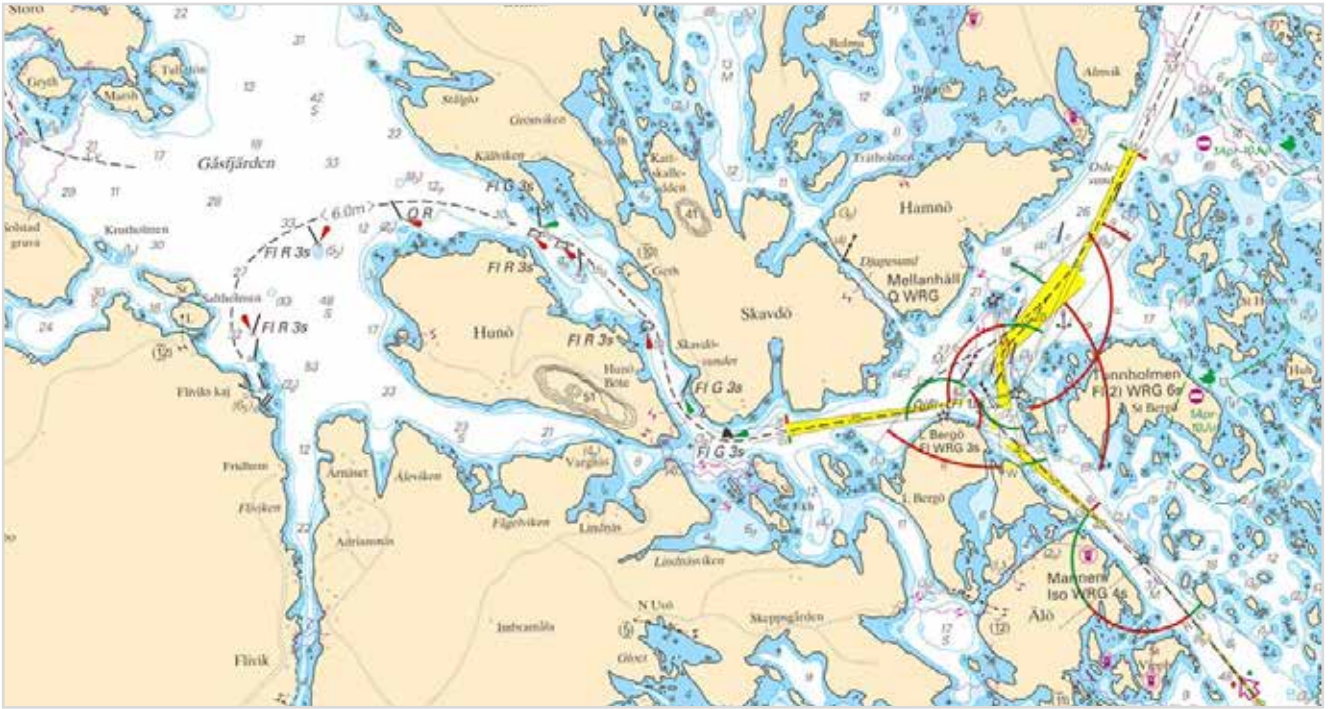


SWEDISH MARITIME
ADMINISTRATION

Photo: Bröderna Höglund Agency

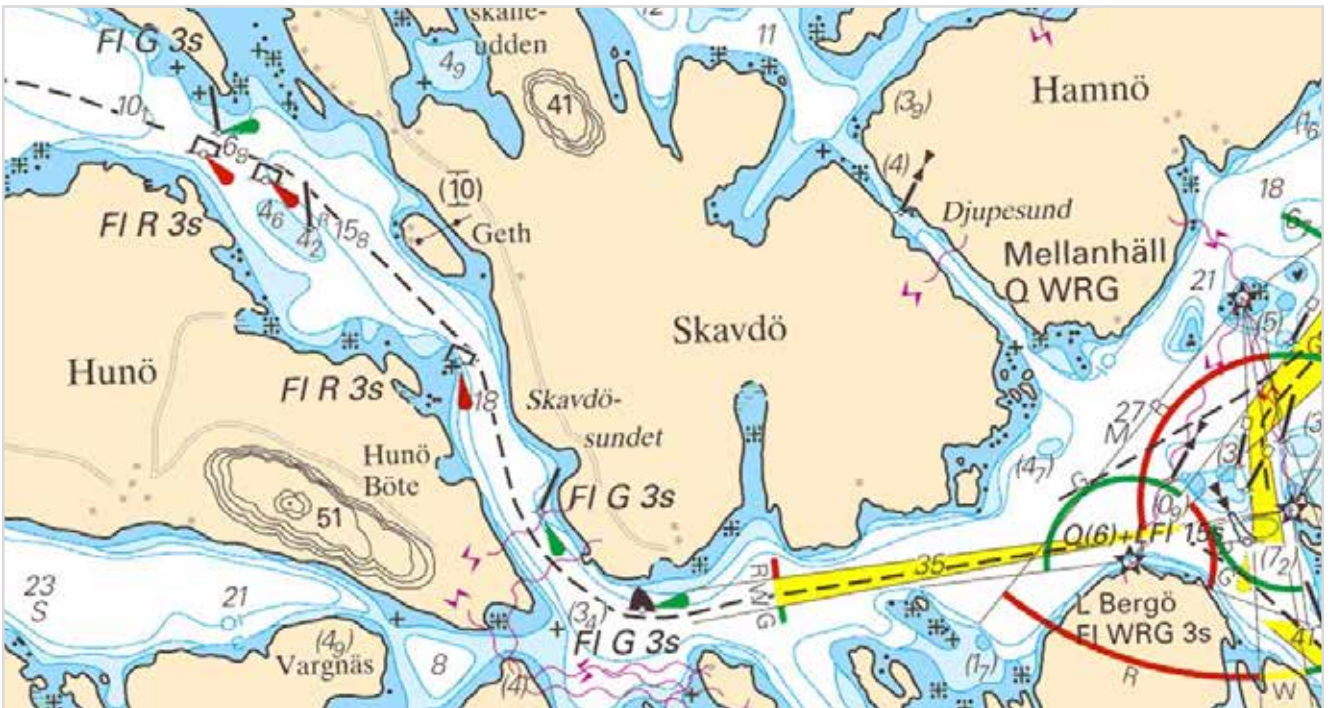
► Guidelines and restrictions for the area on SMA website

Chart 623



► Guidelines and restrictions for the area on SMA website

Chart 623





Quay	Draught	Depth	Length	Bearing	Notes
Flivik	6,0 m	6,5 m	40 m	155/335	8" hoose, crane

Distance pilotstation to berth: 11,2 nm

► Link to "Digitala färdplaner" (Route into Flivik in .rt3 format)



Sternline coming from shore "shoreline"

Headline coming from shore "shoreline"

Short quay - aft spring line must be sent ashore from a position in front of the accommodation.