

# PASSAGE PLAN

## OSKARSHAMN

*Not for navigation*

### OSKARSHAMN PILOTS

VHF channel 13

Pilot boat: VHF channel 13 and 16

Phone: +46-771-630 690

E-mail: southcoastpilot@sjofartsverket.se

- 24 hours before ETA pilot station, give preliminary ETA to Southcoast pilots.
- 5/1 hours before ETA pilot station; confirmation of ETA to Oskarshamn pilots.
- Order changes less than five hours in advance and cancellation less than three hours in advance will be charged.

[www.sjofartsverket.se](http://www.sjofartsverket.se)

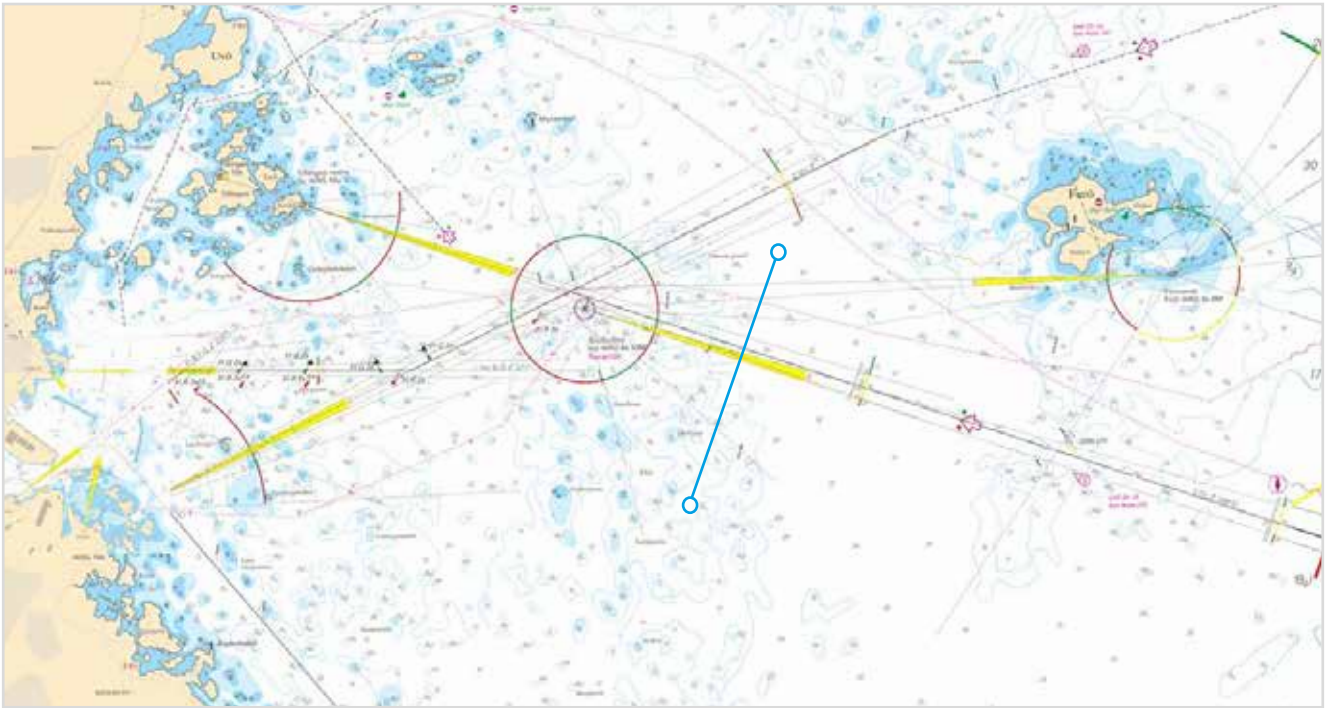


SWEDISH MARITIME  
ADMINISTRATION

Photo: Oskarshamns hamn

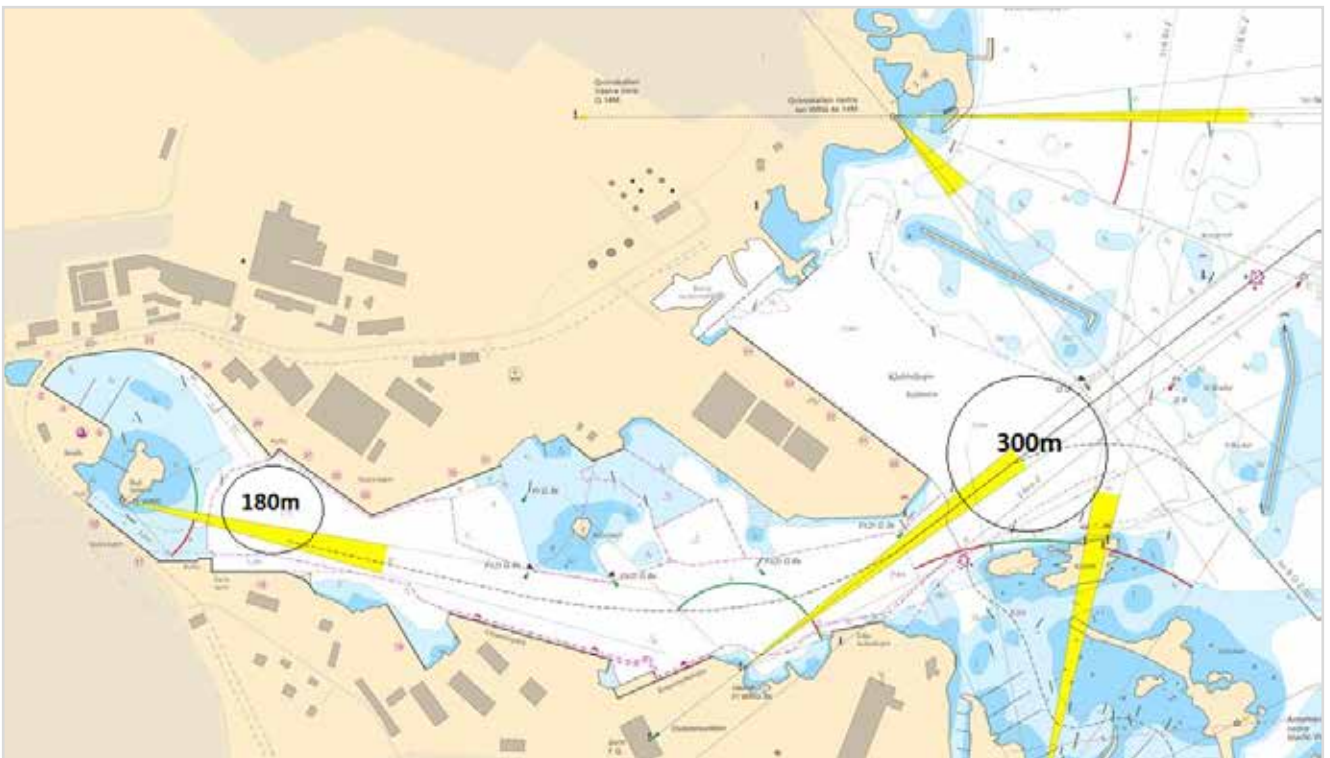
► Guidelines and restrictions for the area on SMA website

Chart 6241



► Guidelines and restrictions for the area on SMA website

Chart 6241

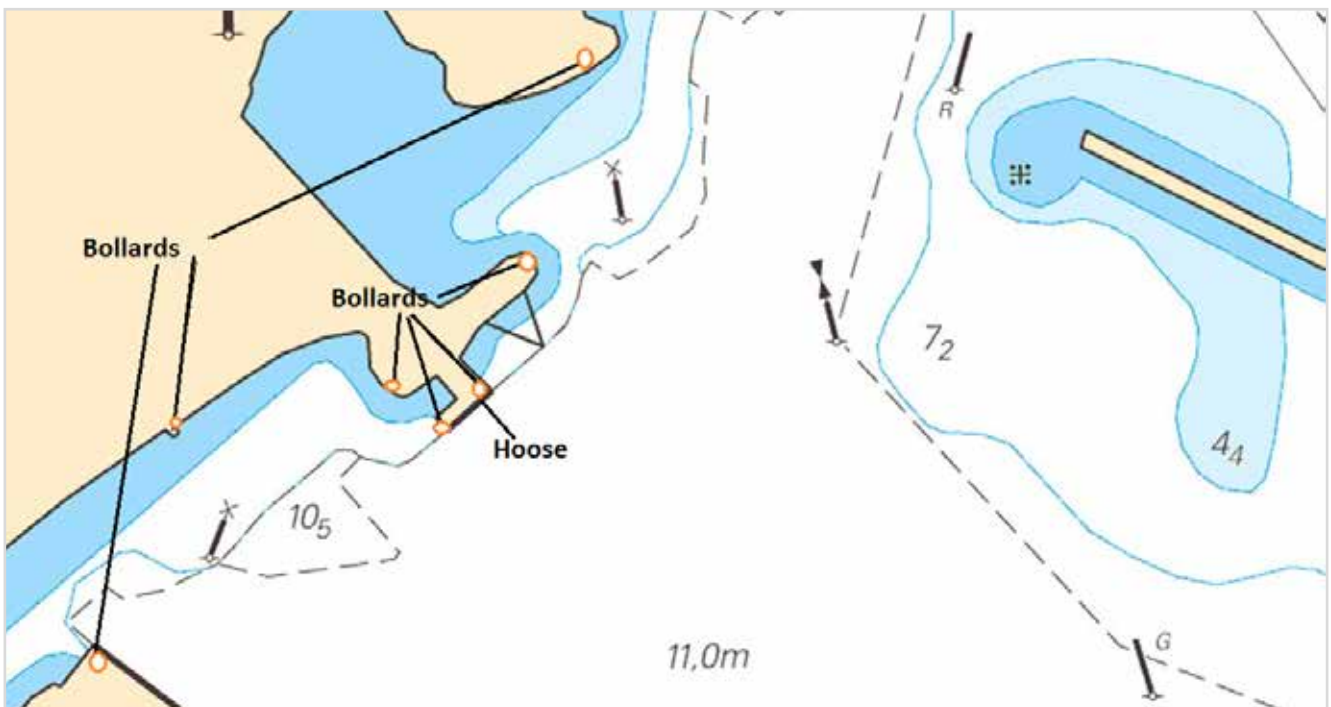


Distance pilotstation to berth: 5,7 nm

► [Link to route into Oskarshamn in .rt3 format](#)

Quay	Draught	Depth	Length	Bearing	Notes
Oil berth	10,0	10,5	26	050/230	8" hoose, crane
Ocean berth 50-54	10,3	10,8	480	308/128	
Liljeholms- kajen		5,5-6,5	100	080/260	Spare berth
Kopparverks- kajen		6,9-9,6	116	067/247	
Utrustnings- kajen	7,3	7,8	320	107/287	Shipyard area
Berth no.16		3,7-4,6	150	151/331	Spare berth
<b>Södra kajen</b>					
No.13	6,8	7,3	185	091/271	Ferry terminal w/ro-ro
No.10-11	4,5-3,2	5,0-3,7	175	130/310	
No.28	7,0	7,5	128	140/320	
No.31-33	7,3	7,8	215	127307	
No.34-35	7,3-5,5	7,8-6,0	200	070/250	
No.36-37	5,5-4,0	6,0-4,5	55	070/250	
Reservkaj		11,4	40	003/183	Disused oil jetty

### Mooring arrangements



## **Our pilots are your guarantee for a safe voyage.**

We provide harbour pilotage in all Swedish ports as well as deep sea pilotage services in the Baltic Sea. Our certified pilots provide a high quality, safe and efficient pilotage service in order to minimize risks for the shipping industry.

The Swedish coast is divided into nine pilot areas; Luleå, Gävle, Stockholm, Södertälje, Kalmar, Malmö, Göteborg, Marstrand and Vänern. VTS operators will provide an update on the current traffic and weather conditions as you report.

## **Deep Sea Pilotage in the Baltic Sea.**

The Swedish Maritime Administration (SMA), ISO 9001-certified since 2003, provides deep sea pilotage in the water area between Sweden and Denmark and in the Baltic Sea.

Swedish pilots, employed by SMA, provide a high quality, safe and efficient pilotage service in order to minimize risks for the shipping industry.

SMA Pilots have knowledge of all the TSS in the area, knowledge and experience of ice conditions and will provide information about weather, water levels and ice conditions.

Deep sea pilotage should be ordered 24 hours in advance. To order deep sea pilotage services, please contact us by e-mail or telephone:

South coast pilot:

Telephone: +46 (0)771 63 06 80

E-mail: [southcoastpilot@sjofartsverket.se](mailto:southcoastpilot@sjofartsverket.se)

► [Link to Malmoe Pilot Area](#)

We provide deep sea pilotage to and from all Swedish ports, to all ports in the Baltic Sea area, and inbound to the Baltic Sea area.

All Swedish deep sea pilots are **certified red card pilots** and they completed a IMO-based training program following resolution A.480. These pilots are all experienced captains and are usually working as harbour pilots. The presence of our certified red card pilots will improve the overall safety for your vessel when operating in the Baltic Sea area.

► [Link to southbound and nortbound routes in .rt3 format](#)