

PASSAGE PLAN OXELÖSUND

Not for navigation

OXELÖSUND PILOTS
VHF Channel: 10
Pilot boat: VHF 10

Phone: +46-(0)771-630 645
E-Mail: eastcoastpilot@sjofartsverket.se

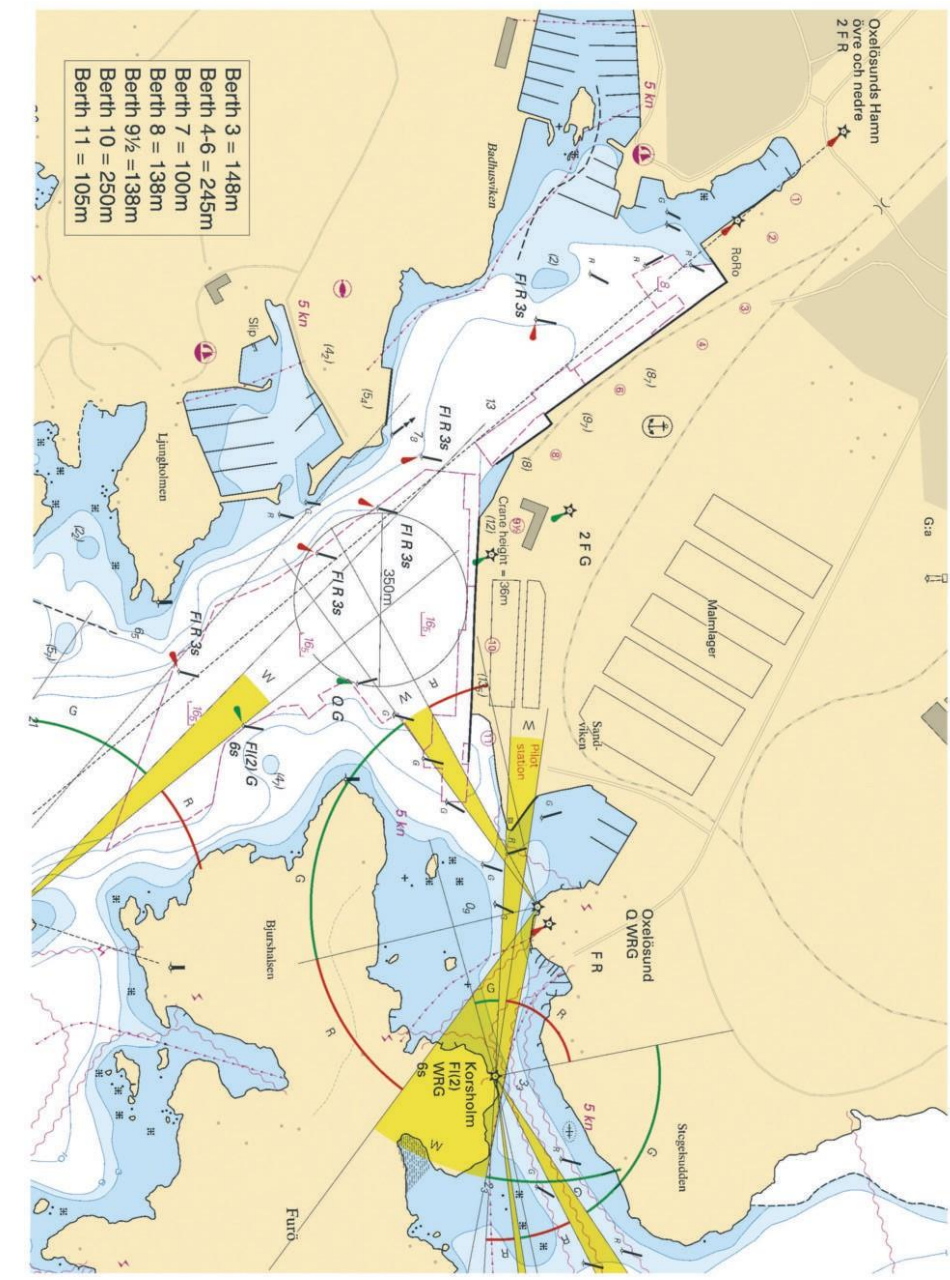
VTS OXELÖSUND
VHF Channel: 09

Phone: +46-(0)771-630 675
E-Mail: vtsec@sjofartsverket.se

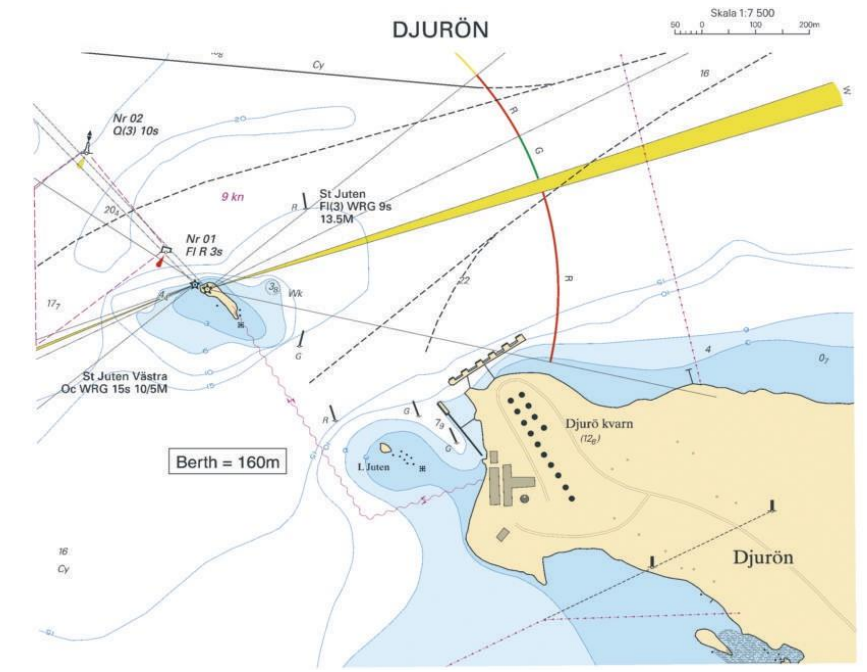
- 24 hours before ETA pilot station – Give preliminary ETA to Oxelösund Pilots.
- 5 hours before ETA pilot station – Confirmation of ETA to Oxelösund Pilots.
- 1 hour before ETA pilot station- Confirmation to Oxelösund Pilots of ship's max-draft and air-draft from ship's master.

Oxelösund, MAIN PORT

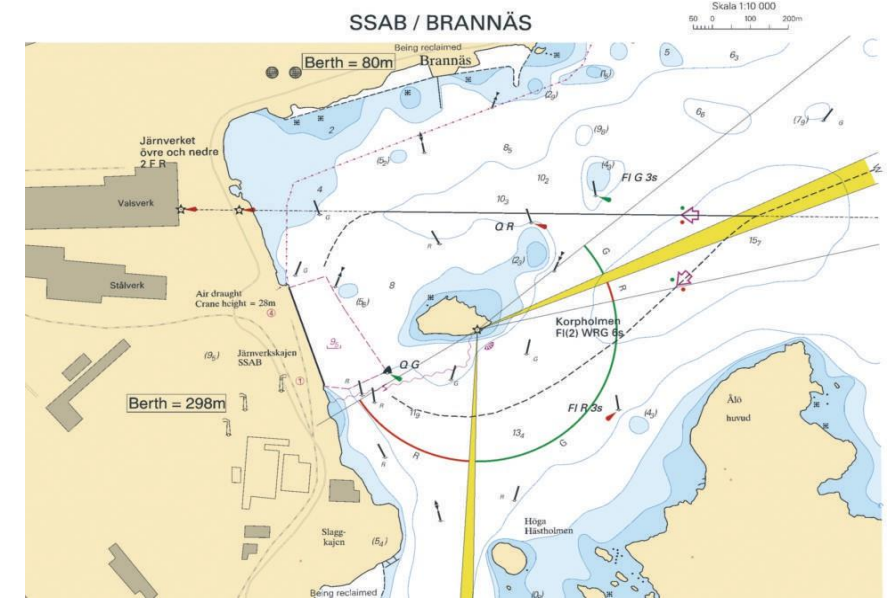
Skala 1:10 000
50 0 100 200m



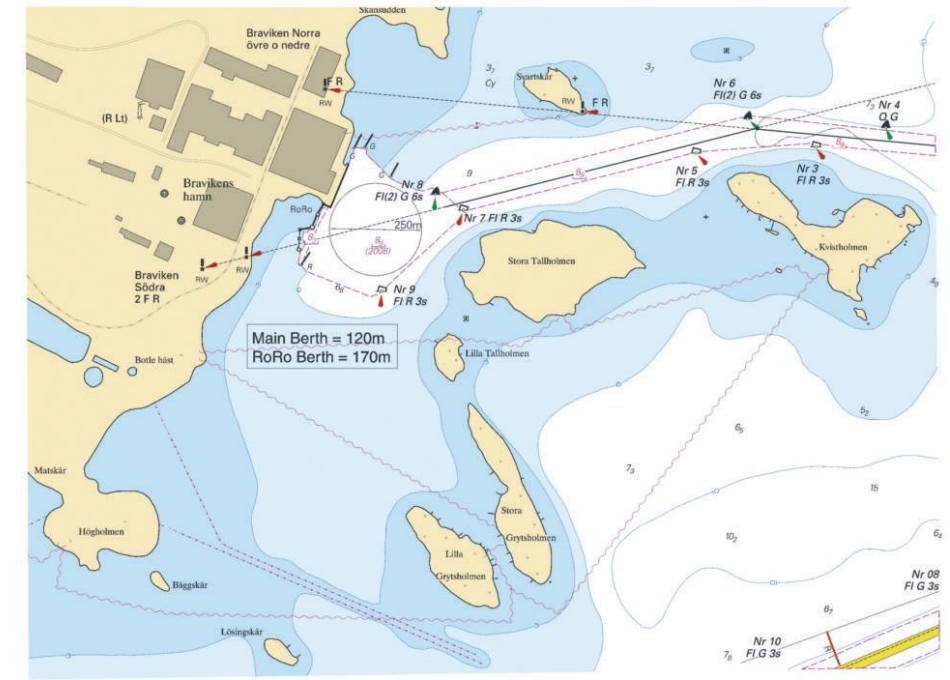
- Berth 3 = 148m
- Berth 4-6 = 245m
- Berth 7 = 100m
- Berth 8 = 138m
- Berth 9½ = 138m
- Berth 10 = 250m
- Berth 11 = 105m



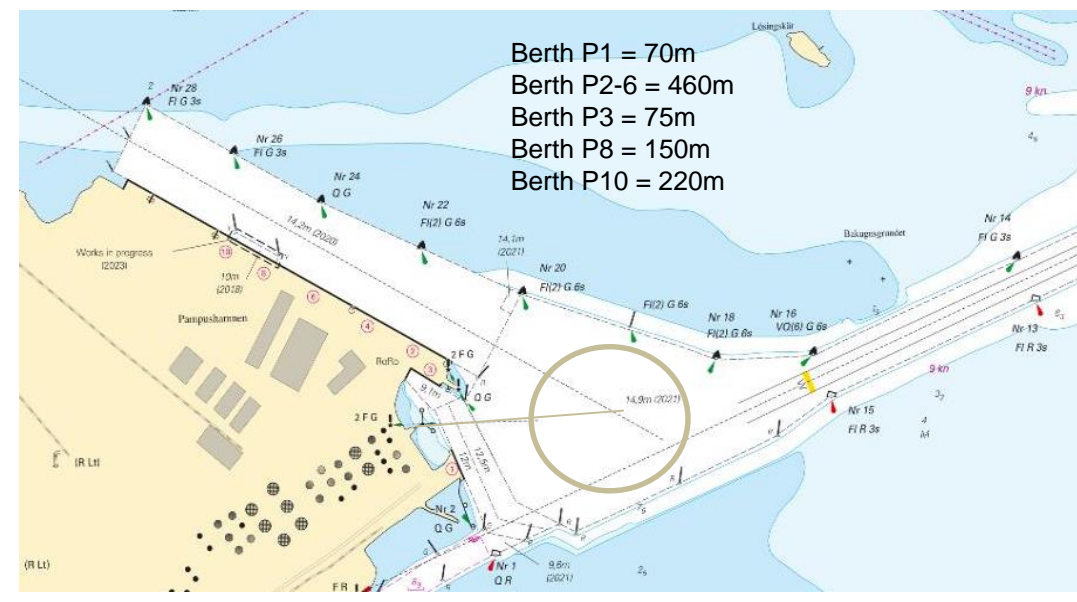
Berth = 160m



Berth = 298m

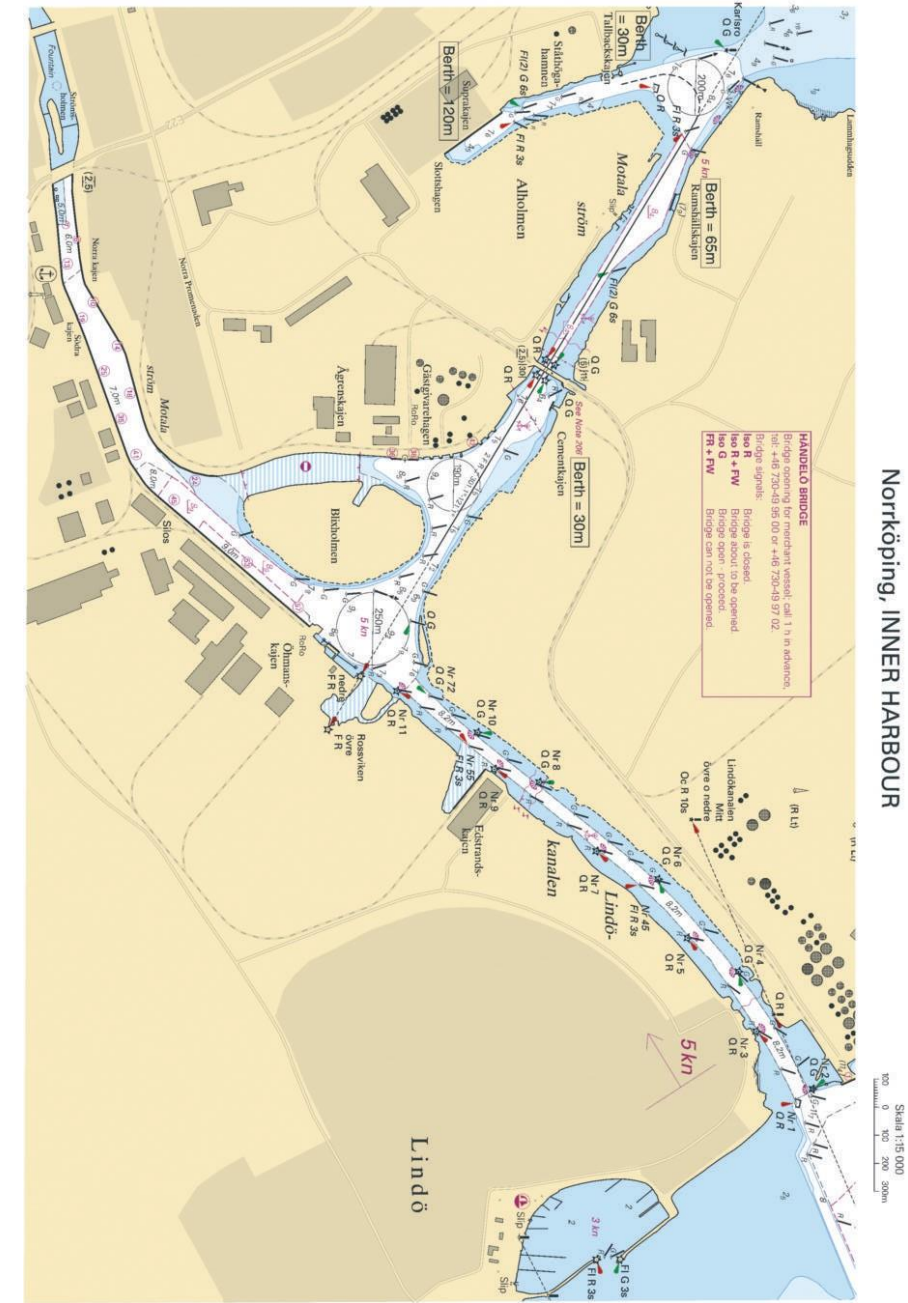
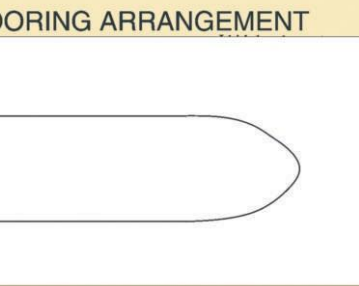
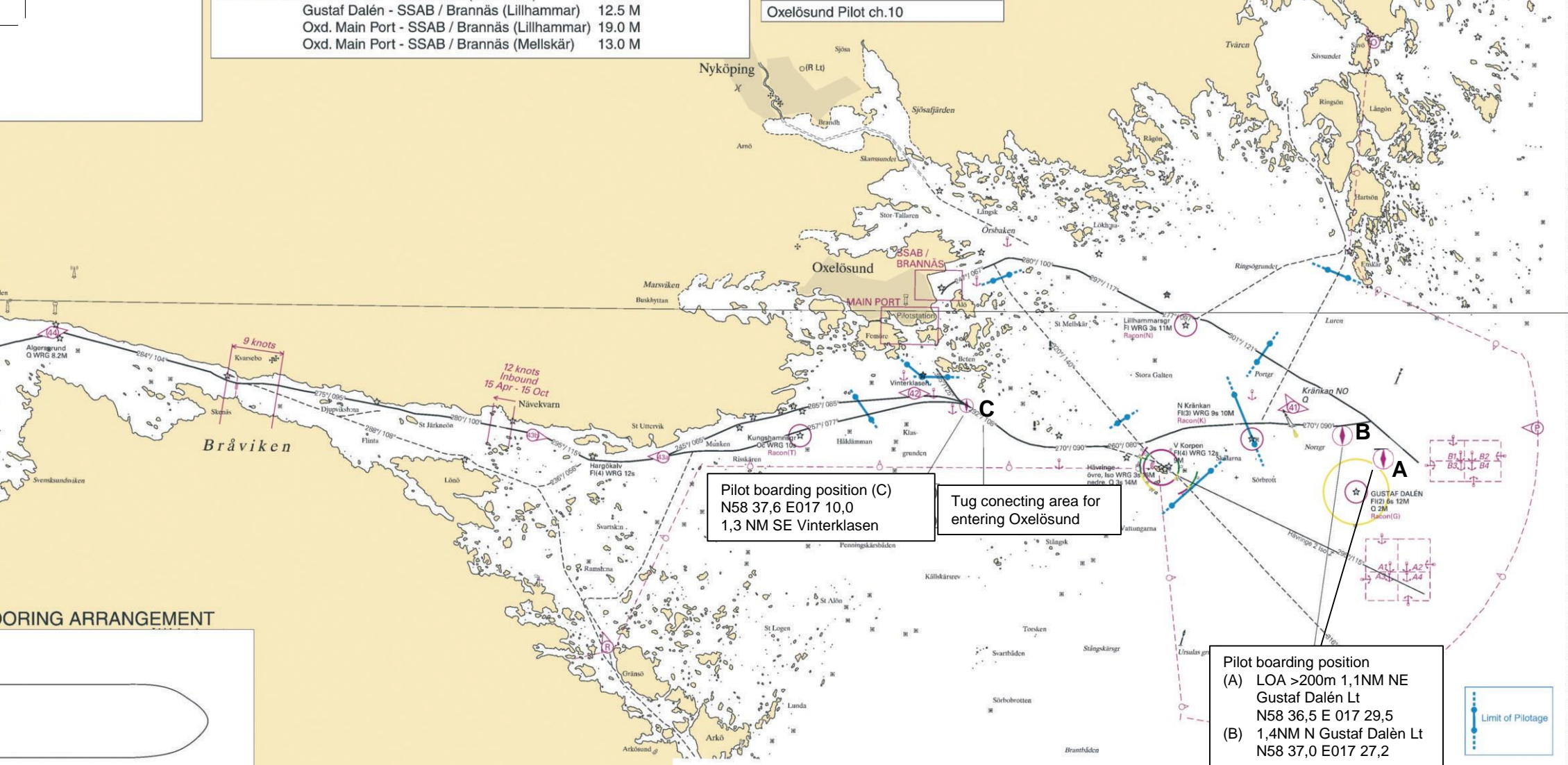


Main Berth = 120m
RoRo Berth = 170m



- Berth P1 = 70m
- Berth P2-6 = 460m
- Berth P3 = 75m
- Berth P8 = 150m
- Berth P10 = 220m

Gustaf Dalén - SSAB / Brannäs (Lillhammar) 12.5 M
 Oxd. Main Port - SSAB / Brannäs (Lillhammar) 19.0 M
 Oxd. Main Port - SSAB / Brannäs (Melliskär) 13.0 M



Norrköping, INNER HARBOUR

Skala 1:15 000
 0 100 200 300m