

SOUNDREP provide information service to shipping about specific and urgent situations as well as other information concerning safety of navigation (weather, current, water level, ice or other hazards). Information of general interest will be broadcasted.

The call sign is **"Sound Traffic"** and the Sound area is divided in two sectors with VHF channel:

**Sector 1 North: VHF channel 73 (required)**

**Sector 2 South: VHF channel 71 (required)**

Broadcast 1: VHF channel 79 (covering both sector north and south)

Broadcast 2: VHF channel 68 (backup channel).

Ships passing the sector line, shall by their own initiative change the VHF channel.

When ships are crossing the reporting lines, a mandatory SOUNDREP report must be communicated to Sound VTS by VHF, e-mail or telephone. The use of correct and updated AIS information accomplish the main part of the reporting requirements. The report must contain the following information:

- A. Name of ship, call sign, IMO number and MMSI number.
- B. Date and time.
- C. Position expressed in latitude and longitude.
- E. True course.
- F. Speed.
- I. Destination and ETA.
- L. Route information and intended route through the Sound.
- O. Maximum present draught.
- P. Cargo; and quantity and IMO class of dangerous goods.
- Q. Defects and deficiencies or other limitations.
- T. Contact details for the communication of cargo information.
- U. Air draught when exceeding 35 meters.
- W. Total number of persons on board.
- X. Type and estimated quantity of bunker (only ships of 1000 gross tonnage and above).

Designator O, Q and U shall at all times be given using VHF voice when entering the area.

Detailed information can be found at: [www.sjofartsverket.se/Sound-VTS](http://www.sjofartsverket.se/Sound-VTS)



# SOUNDREP

Mandatory ship reporting system  
in the Sound between Denmark and Sweden  
from September 1, 2011.

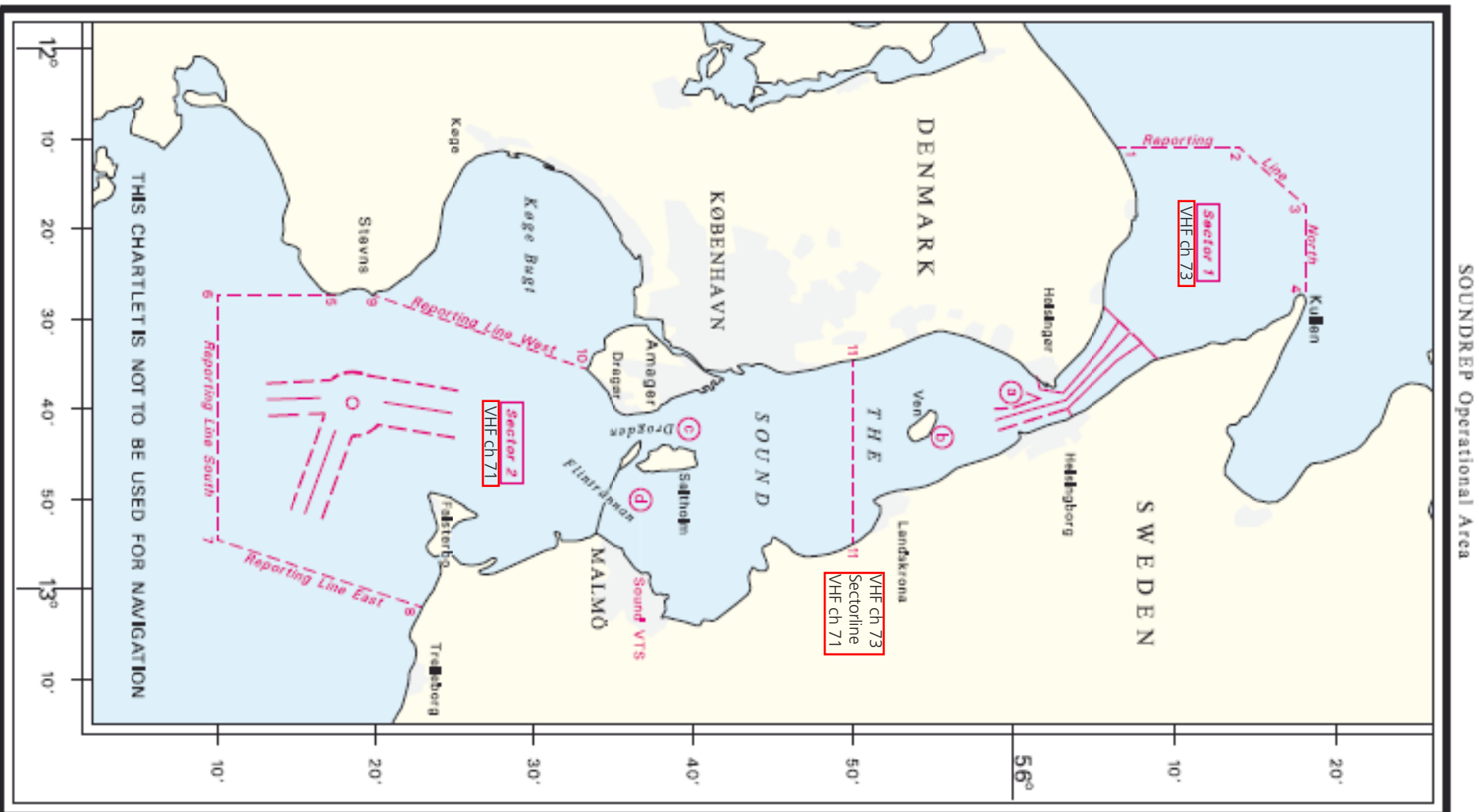
---

## CONTACT INFORMATION

Visits: Hans Michelsengatan 9 ● Telephone: +46 4020 4317 or +46 4020 4334

Box 855, SE-201 80 Malmoe ● Fax: +46 4020 4345

e-mail: [contact@soundvts.org](mailto:contact@soundvts.org)



A brief description of the intended route as planned by the master. Ships navigating in The Sound have options on deciding route in the following areas

- Disken shoal
- Ven island
- Drogden channel
- Flintrännan channel

The route information should be given coded by using the following local designators:

- DW – Disken, west of
- DE – Disken, east of
- VW – Ven, west of
- VE – Ven, east of
- D – Drogden
- F – Flintrännan

**Examples of routes as given under designer L**

A northbound ship leaving Malmö Port planning to sail, east of Ven, TSS In the Sound

(UN LOCODE format for Malmö Port is SE MMA):

L: SE MMA, VE,

A southbound ship in transit planning to sail TSS In the Sound, east of Disken, west of Ven, Drogden channel and TSS Off Falsterbo:

L: DE, VW, D