





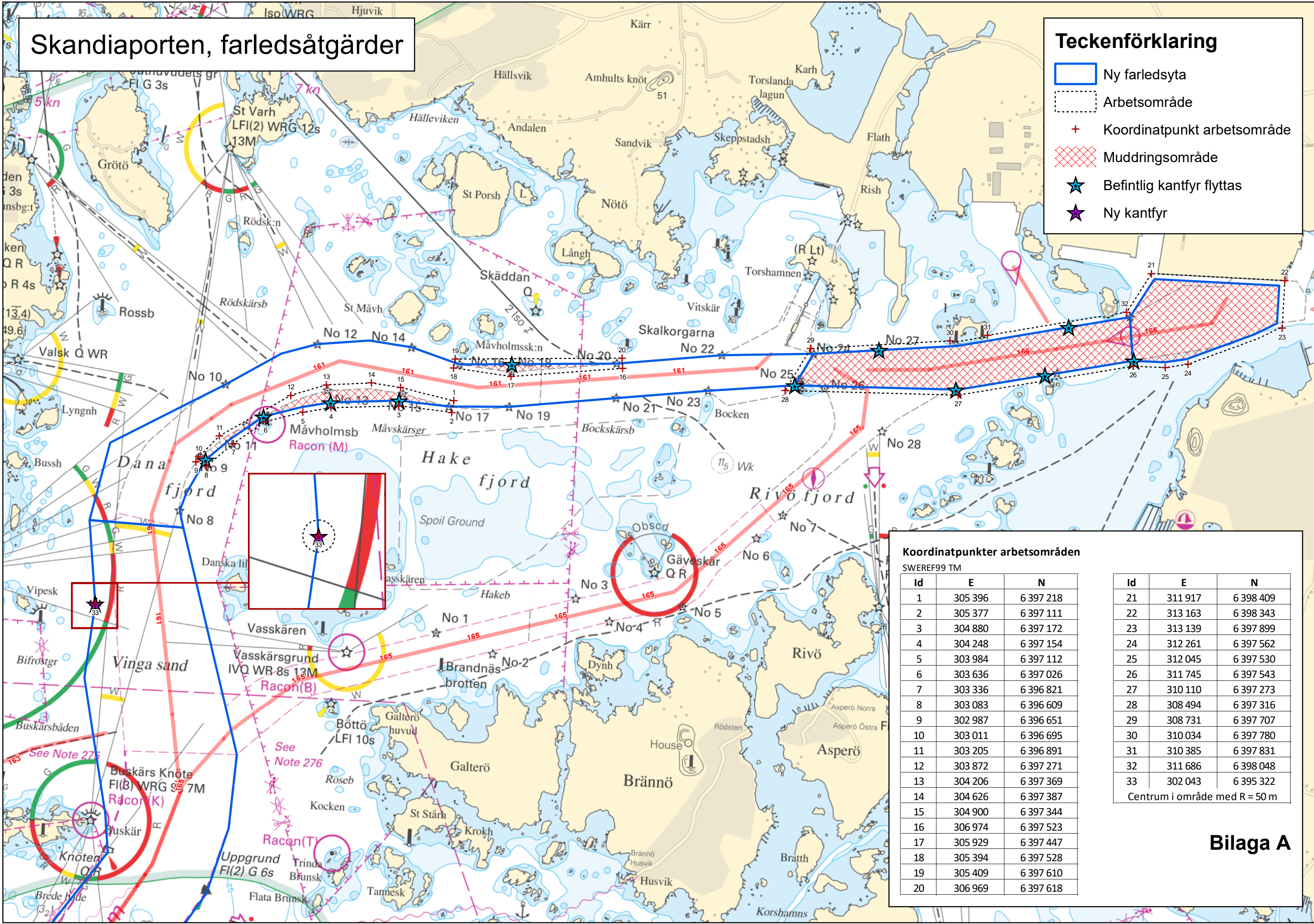


Skandiaporten, farledsåtgärder

Teckenförklaring

-  Ny farledsyta
-  Arbetsområde
-  Koordinatpunkt arbetsområde
-  Muddringsområde
-  Befintlig kantfyr flyttas
-  Ny kantfyr



Koordinatpunkter arbetsområden

SWEREF99 TM

Id	E	N	Id	E	N
1	305 396	6 397 218	21	311 917	6 398 409
2	305 377	6 397 111	22	313 163	6 398 343
3	304 880	6 397 172	23	313 139	6 397 899
4	304 248	6 397 154	24	312 261	6 397 562
5	303 984	6 397 112	25	312 045	6 397 530
6	303 636	6 397 026	26	311 745	6 397 543
7	303 336	6 396 821	27	310 110	6 397 273
8	303 083	6 396 609	28	308 494	6 397 316
9	302 987	6 396 651	29	308 731	6 397 707
10	303 011	6 396 695	30	310 034	6 397 780
11	303 205	6 396 891	31	310 385	6 397 831
12	303 872	6 397 271	32	311 686	6 398 048
13	304 206	6 397 369	33	302 043	6 395 322
14	304 626	6 397 387	Centrum i område med R = 50 m		
15	304 900	6 397 344			
16	306 974	6 397 523			
17	305 929	6 397 447			
18	305 394	6 397 528			
19	305 409	6 397 610			
20	306 969	6 397 618			

Bilaga A