

# PASSAGE PLAN

## LANDSORT - NYNÄSHAMN - STAVSNÄS

*Not for navigation*

### SÖDERTÄLJE PILOTS

VHF Channel: 11

Pilot boat: VHF 11, 68 and 16

Phone: +46-771-630 635

Telefax: +46-10-478 50 49

E-Mail: [eastcoastpilots@sjofartsverket.se](mailto:eastcoastpilots@sjofartsverket.se)

### VTS SÖDERTÄLJE

VHF Channel: 68

Phone: +46-771-630 675

E-Mail: [vtsec@sjofartsverket.se](mailto:vtsec@sjofartsverket.se)

- 24 hours before ETA pilot station – Give preliminary ETA to Södertälje Pilots.
- 5 hours before ETA pilot station – Confirmation of ETA to Södertälje Pilots.
- 1 hour before ETA pilot station- Confirmation to Södertälje Pilots of ship's max-draft and air-draft from ship's master.

Ver 2022-08

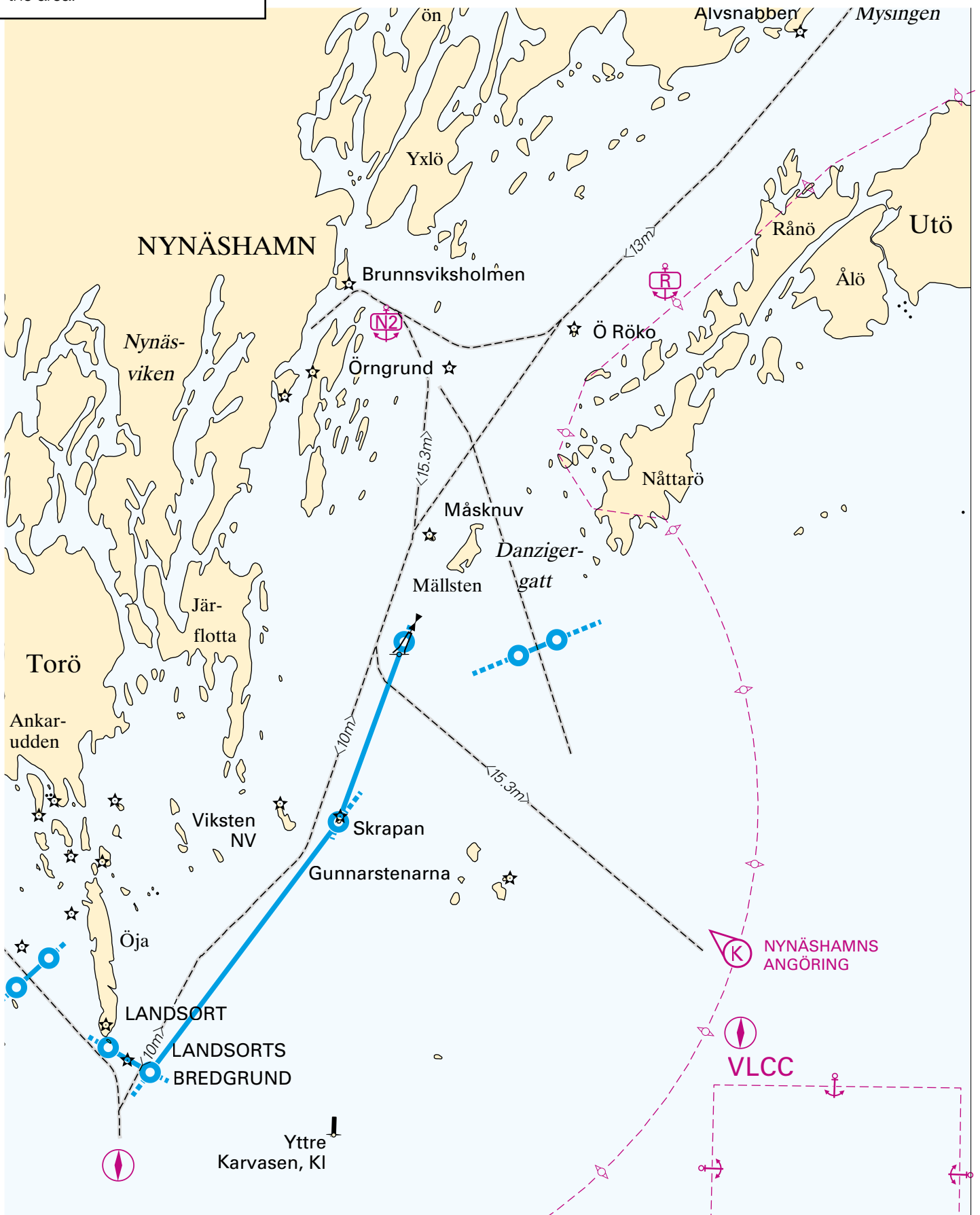
[www.sjofartsverket.se](http://www.sjofartsverket.se)



SWEDISH MARITIME  
ADMINISTRATION

## ► Nynäshamn

Link to SMA website with guidelines and restrictions for the area.

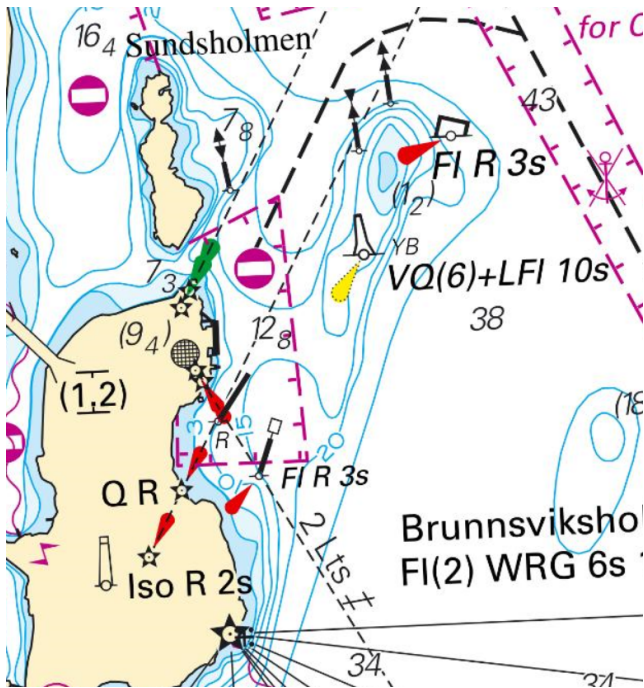


Landsort – Nynäshamn  
Gunnarsstenarna – Nynäshamn

max draught 10,00 m  
max draught 15,30 m, max size LOA 330,00 m

## ► LNG terminal

Link to SMA website with guidelines and restrictions for the area.



## Restrictions AGA Nynashamn LNG terminal

Pos: 58 55,3° N 17 58,7° E  
Charts 616, 6171

### Harbour

Nynashamn LNG terminal consists of a concrete jetty with a dolphin in the southern part. Total length of the jetty including dolphin is 75 m, (000°/180°).

Maximum length and beam of vessel is 160 m\*28 m.

Water depth at berth 9,5 m.  
Maximum arrival - departure draft 8,0 m.  
The UKC should never be less than 1,5 m.

## ► Nynäshamn oil terminal

Link to SMA website with guidelines and restrictions for the area.

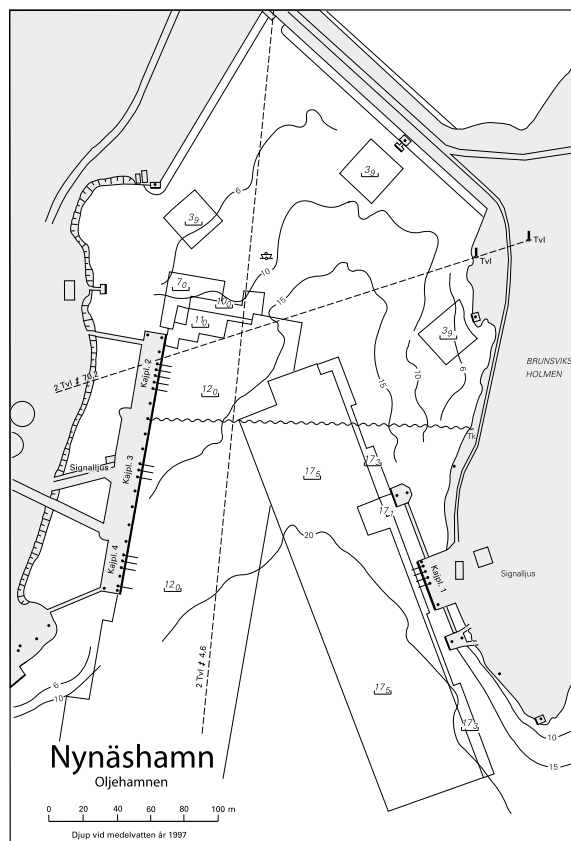


Chart SE 616,  
SE 6171, BA837

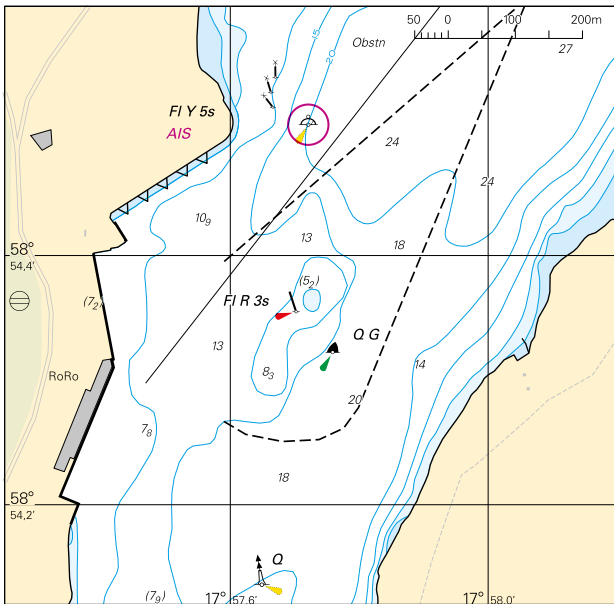
**Quay 1**  
depth 17m  
max draught 13m quay  
length 100m  
max LOA 300m  
158°/338°

**Quay 2**  
depth 7-12m  
max draught 10m  
quay length 155m max  
LOA 300m  
008°/188°  
Yellow mark = 9,5 m  
curve

**Quay 4**  
depth 12m  
max draught 10m quay  
length 155m  
max LOA 300m  
008°/188°

## ► Ferry terminals

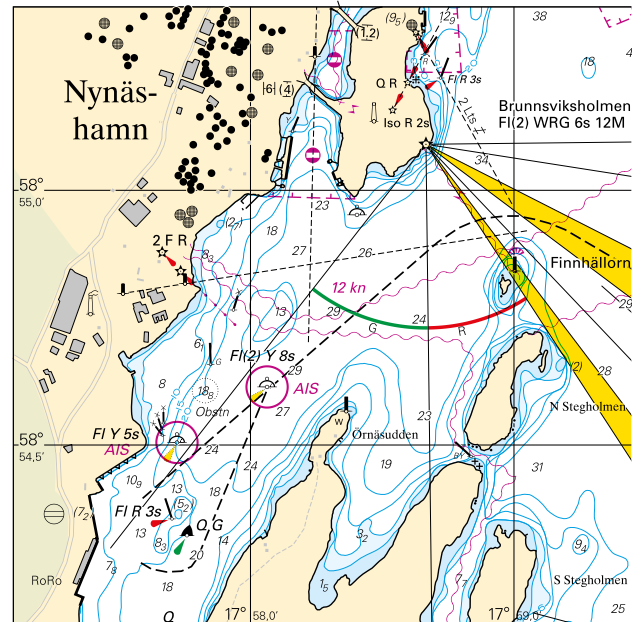
Link to SMA website with guidelines and restrictions for the area.



- (1) 023°/203° (202m), (8,0/7,5)
- (2) 170°/350° (170m), (7,0/6,5m)
- (3) 058°/238° (200m), (9,0/8,5m)

## ► Sea walk

Link to SMA website with guidelines and restrictions for the area.



- depth >10 m east of yellow marks
- distance shoreline to outer mooringbouy 500 m
- 065°/245°

# Alternative embarking/disembarking

