

PASSAGE PLAN

ÅNGERMANÄLVEN

Not for navigation

PILOT AREA GÄVLE

Pilot ordering:

Phone: +46 (0)771 63 06 10

Telefax: +46-(0)26-994 69

E-mail: northcoastpilot@sjofartsverket.se

VHF channel 13, call for "Northcoast Pilot".

- 24 hours before ETA to the destination.
- 5 hours before ETA pilot station.
- Order changes less than five hours in advance and cancellation less than three hours in advance will be charged.

www.sjofartsverket.se



SWEDISH MARITIME
ADMINISTRATION

Date / time:

Your pilot today is:

Ship's name:

Drafts:

Master's name:

Name of berth:

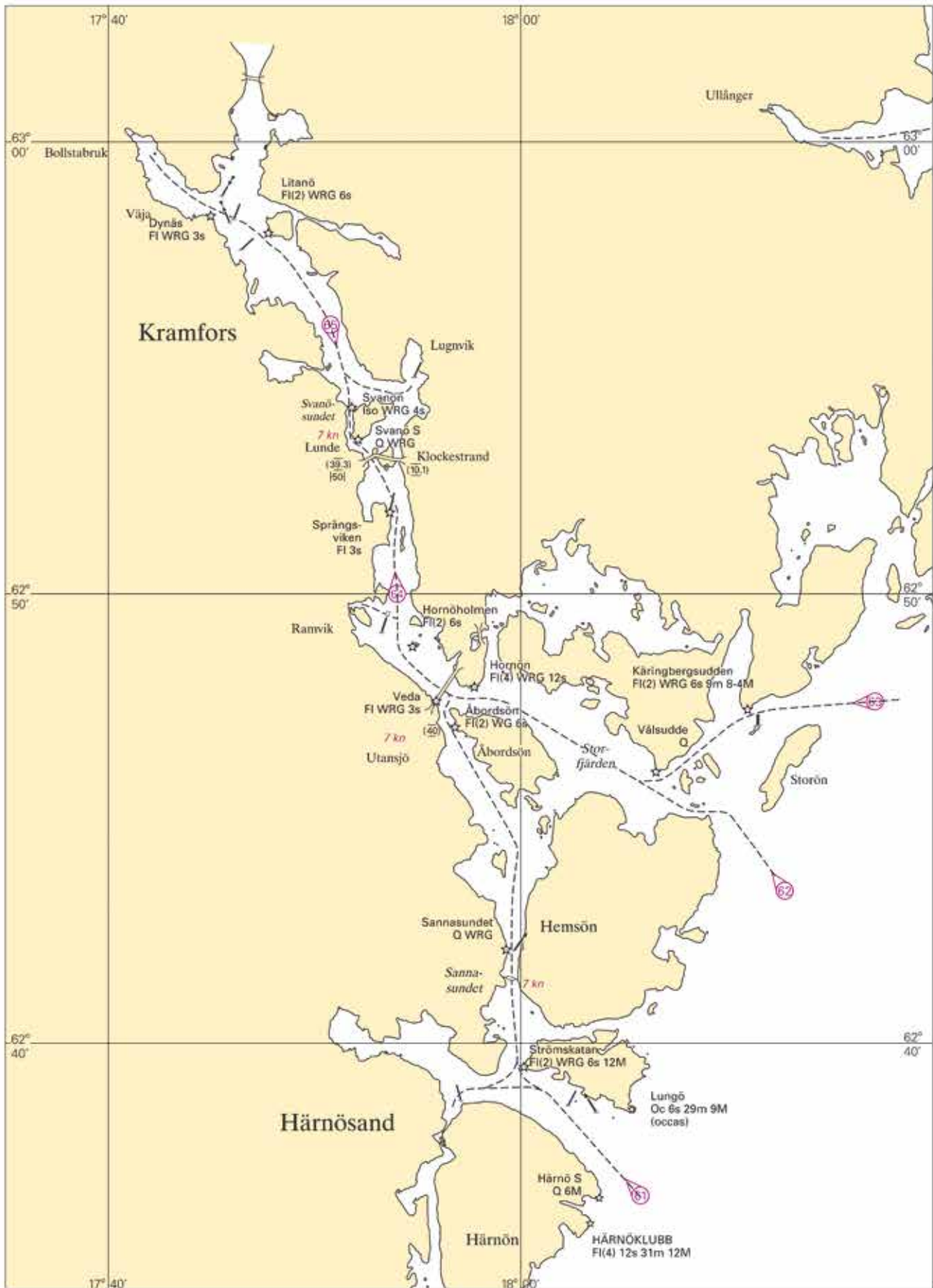
Water level:

Current wind:

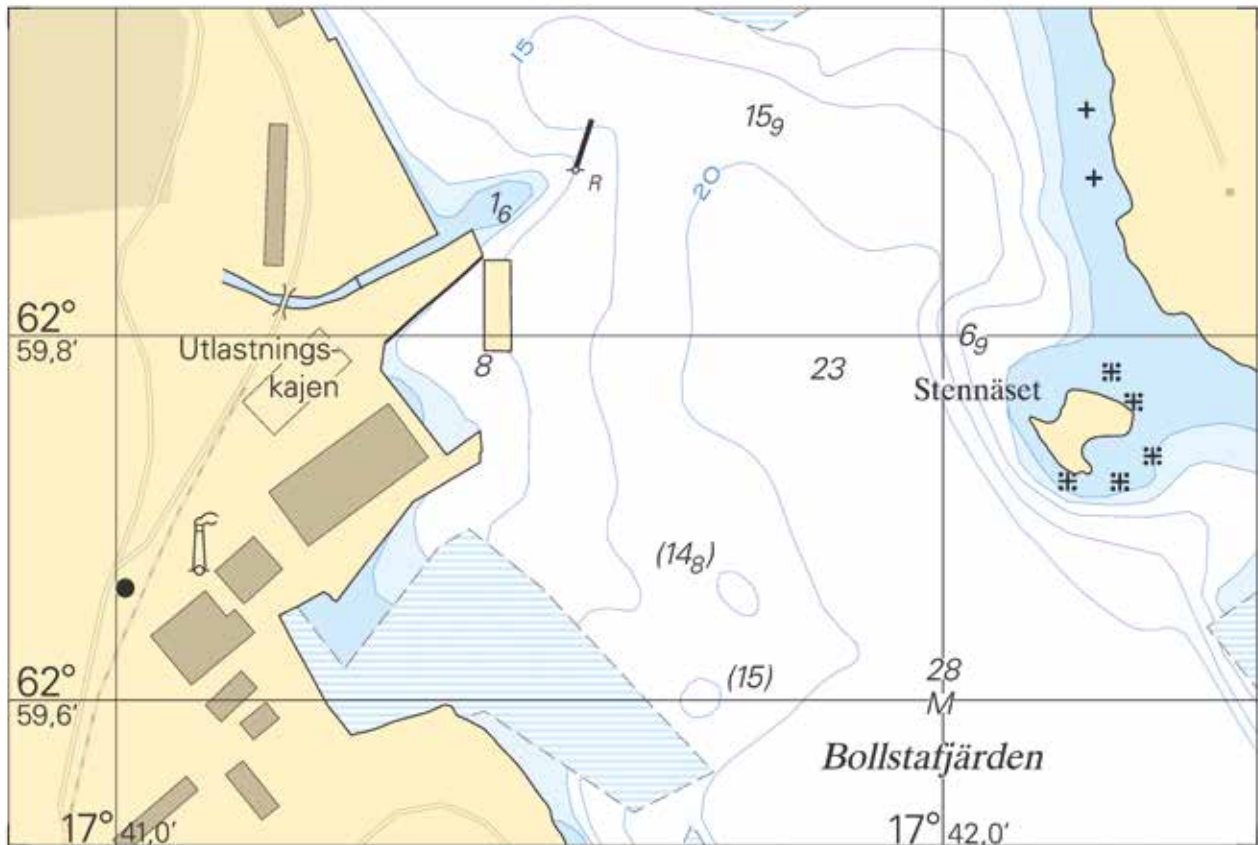
Tug(s):

Remarks:

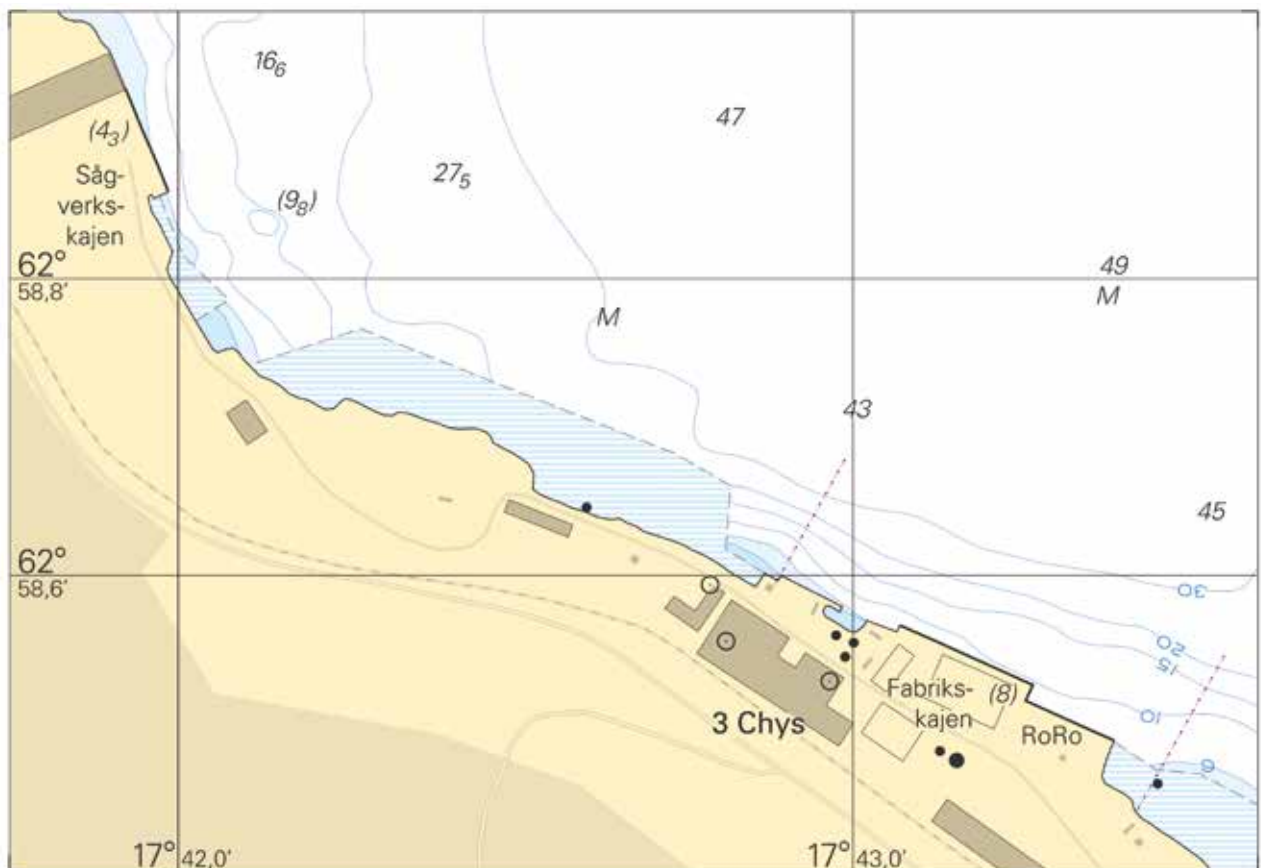
Overview



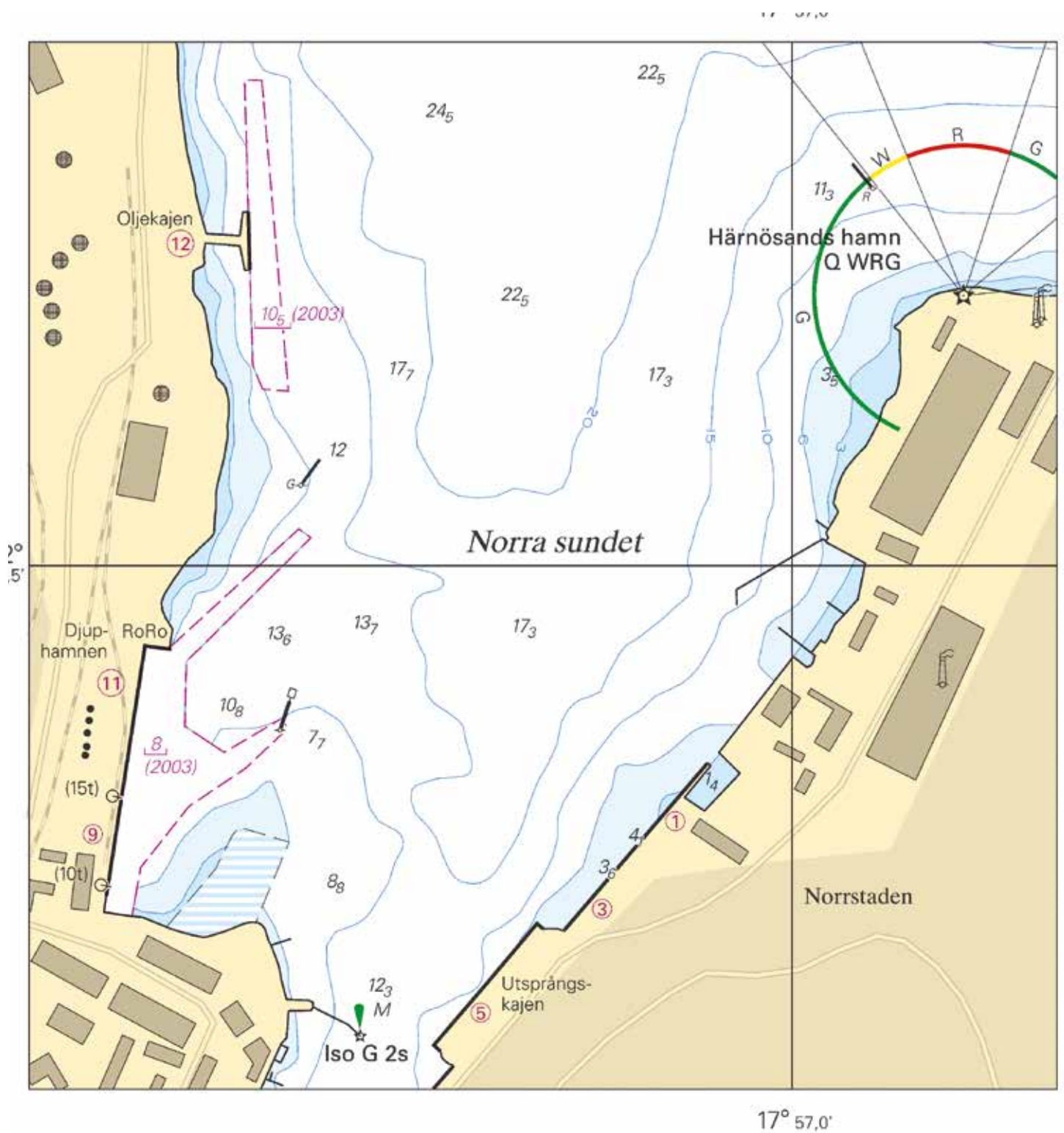
Bollsta



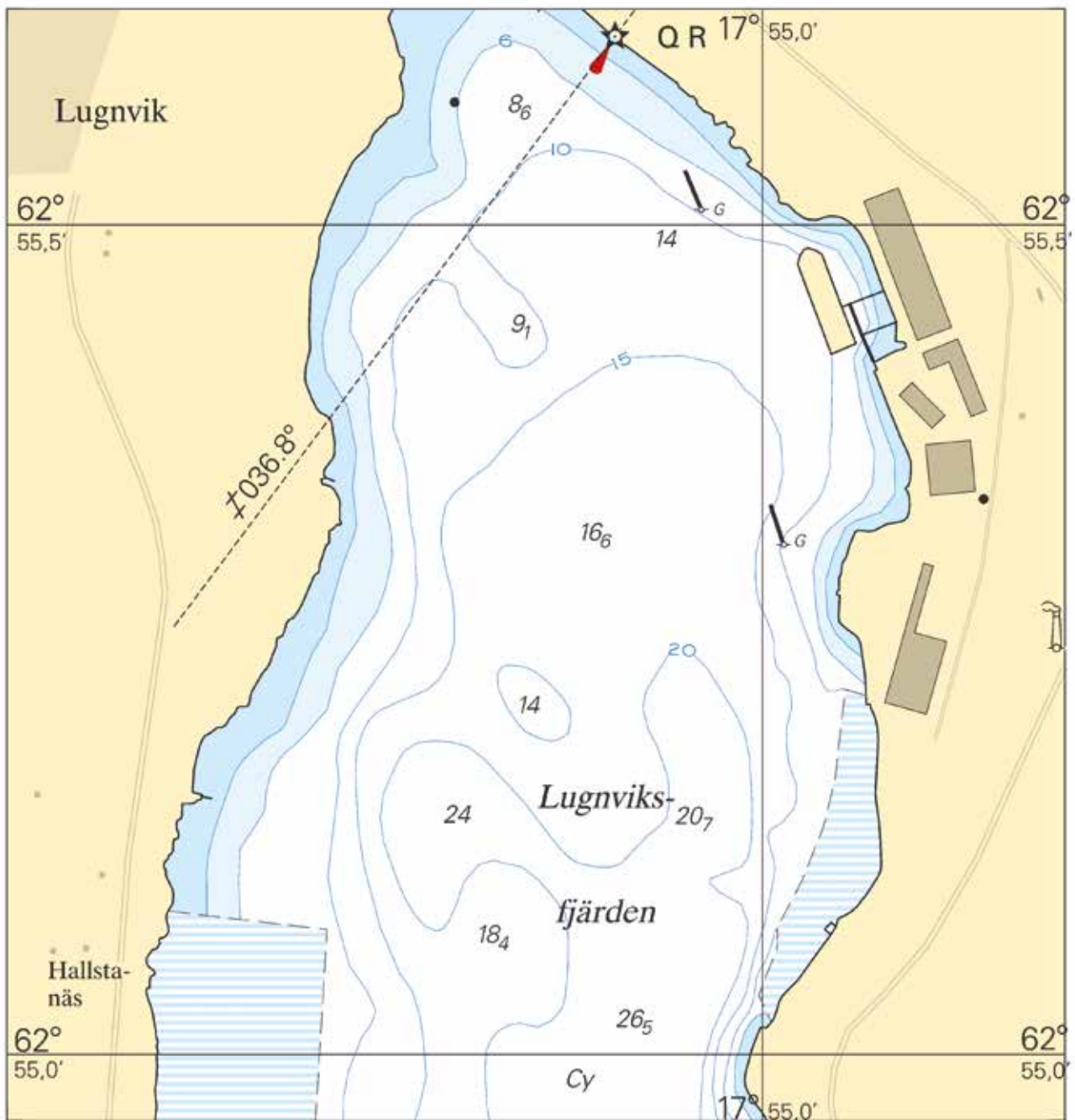
Väja



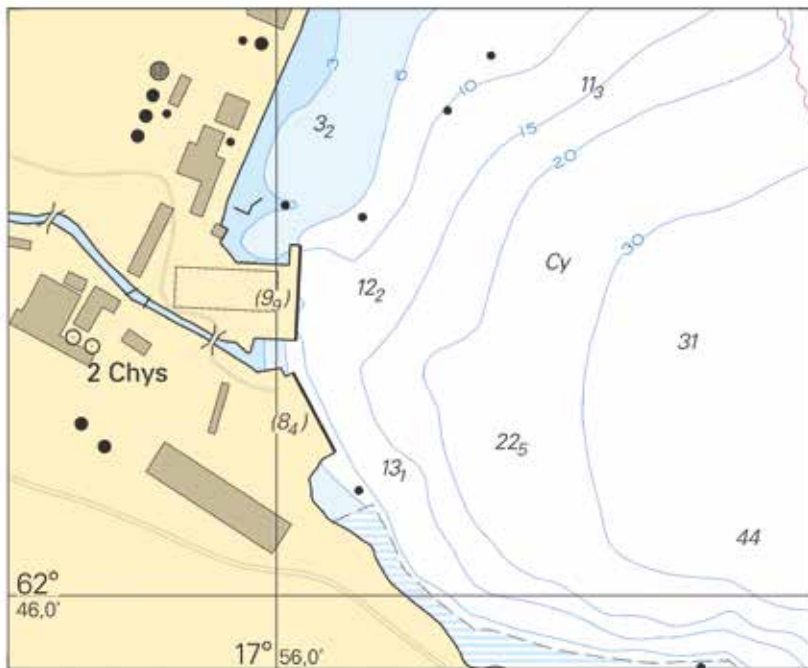
Härnösand



Lugnvik



Utansjö



QUAY #	Length (meter)	Depth (meter)	Max draught * (meter)	Max ship length (meter)	Course	Hoose
HÄRNÖSAND						
#4-6 Utsprångskajen	165	8,2	7,9	-	221°-041°	
#10-13 Djupkajen	300	7,9	7,6	200	192°-012°	
#14 Oljekajen	62	10,4	9,9	-	000°-180°	8 and 10
ÅNGERMANÄLVEN						
Utansjö S	114	8,3	8	170	332°-152°	8"
Utansjö N	120	8,8	8,5	170	001°-181°	
Lugnvik* (barge, 120 m)	120	9,2	8,4	145	340°-160°	
Väja RoRo	120	7,8	7,1	160	290°-110°	
Väja paper 0-76 m from S	76	9,2	8,3	-	290°-110°	
Väja paper 0-170 m from S	170	7,7	7,4	200	290°-110°	6"
Väja timber 0-81 m from S	81	6,0	5,8	-	339°-159°	
Väja timber 81-99 m from S	5,1	5,1	4,9	-	339°-159°	
Väja timber 99-136 m from S	136	4,5	4,3	-	339°-159°	
Bollsta unloading (barge, 92 m)	135	9,2	8,4	145	356°-176°	

The Swedish Maritime Administration provides pilotage and assistance in the navigation to vessels within Swedish territorial waters. Pilotage must be ordered five hours before the pilotage starts. The pilot order centres receive the pilot order and designate pilots to every assignment. On average, 33,000 pilotages are conducted each year.

