

# PASSAGE PLAN

## SUNDSVALL

*Not for navigation*

### **PILOT AREA GÄVLE**

Pilot ordering:

Phone: +46 (0)771 63 06 10

Telefax: +46-(0)26-994 69

E-mail: northcoastpilot@sjofartsverket.se

VHF channel 13 for Sundsvall, Söderhamn and Gävle, call for "Northcoast Pilot".

- 24 hours before ETA to the destination.
- 5 hours before ETA pilot station.
- Order changes less than five hours in advance and cancellation less than three hours in advance will be charged.

[www.sjofartsverket.se](http://www.sjofartsverket.se)



**SWEDISH MARITIME  
ADMINISTRATION**

Date / time:

Your pilot today is:

---

Ship's name:

Drafts:

Master's name:

Name of berth:

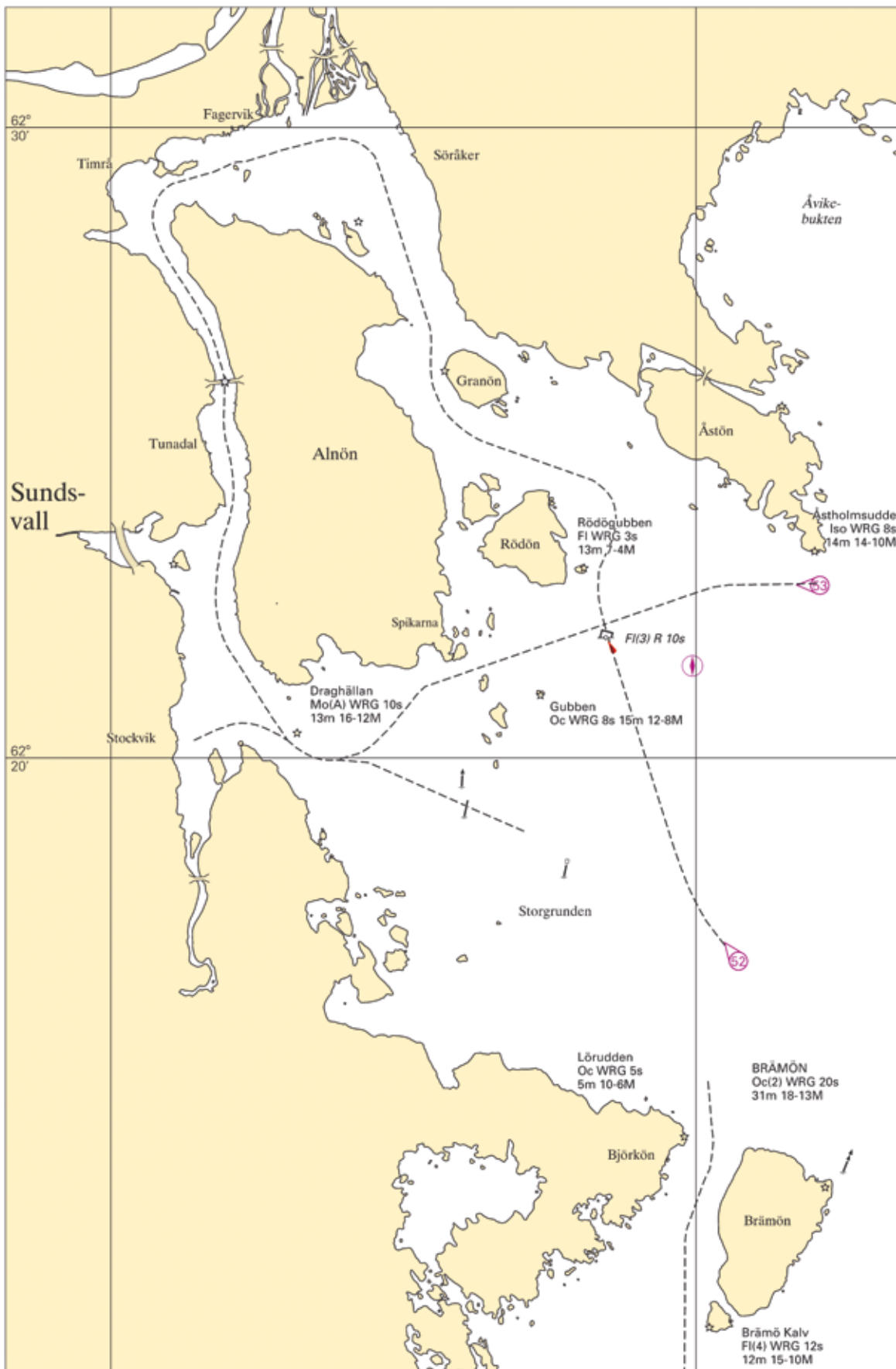
Water level:

Current wind:

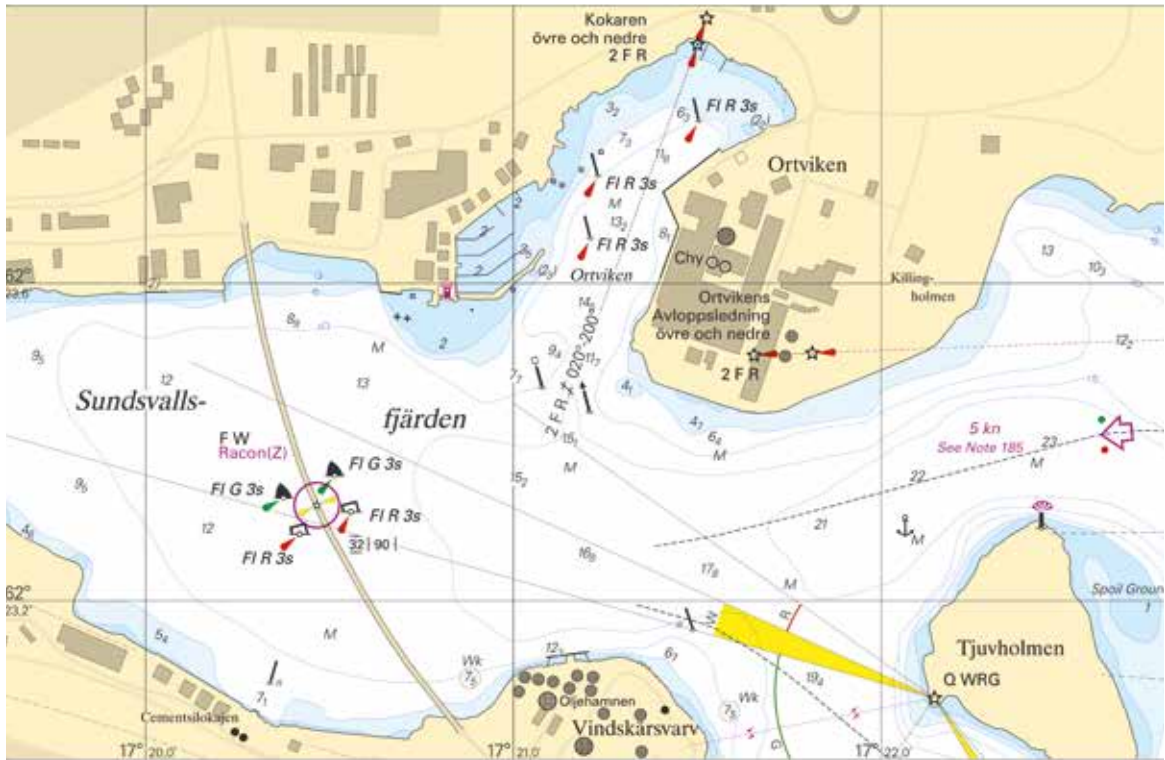
Tug(s):

Remarks:

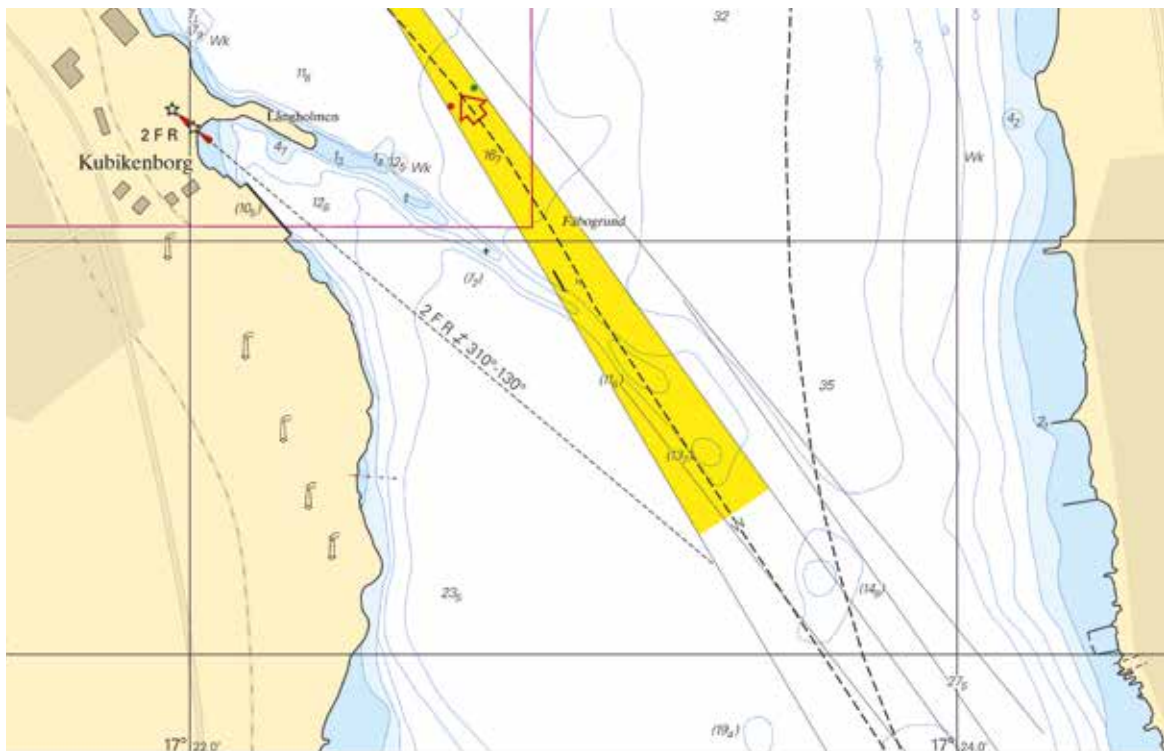
# Sundsvall overview



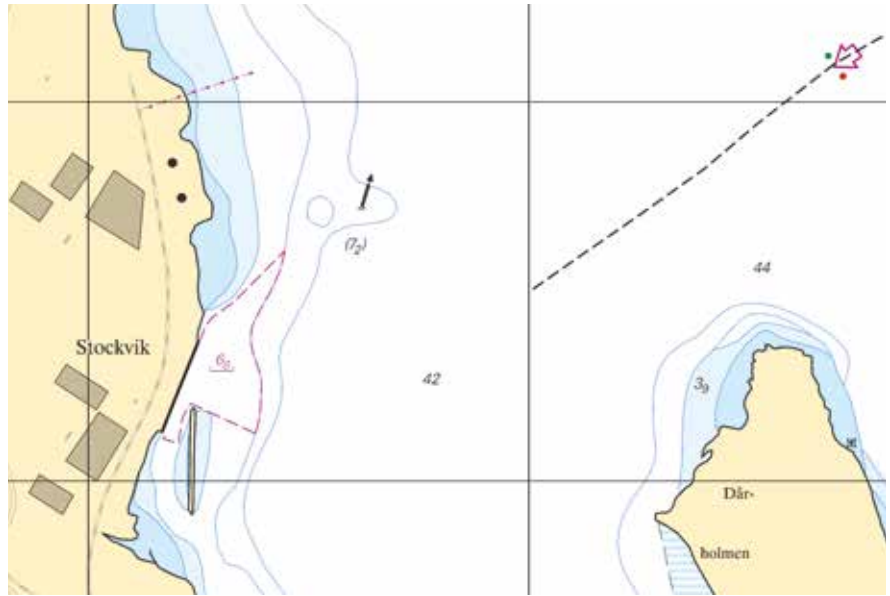
## Sundsvall inlet



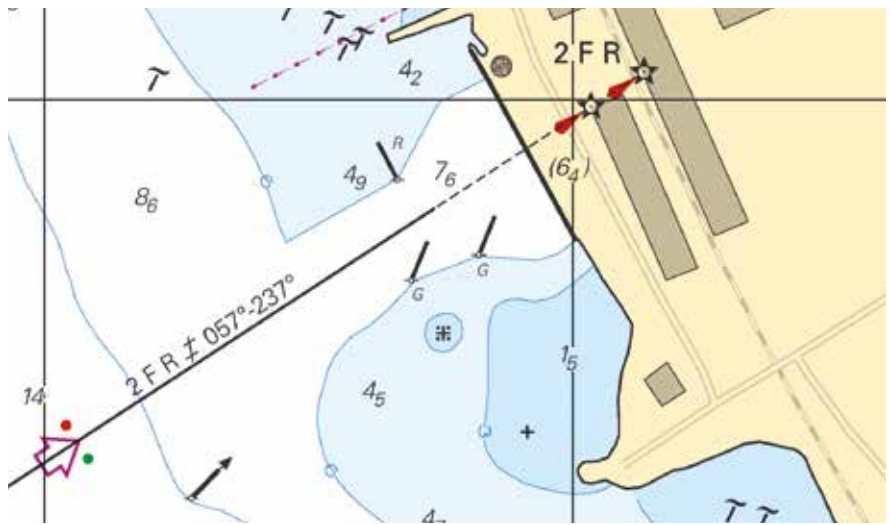
## Kubikensborg



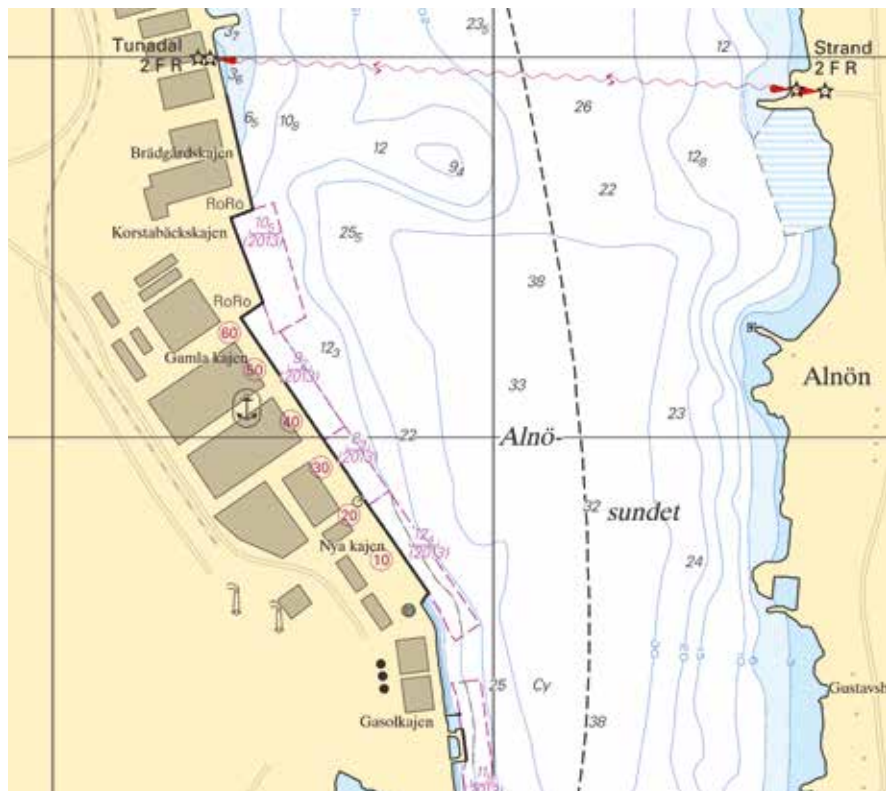
### Stockvik



### Söråker



### Tunadal



# Östrand



QUAY #	Length (meter)	Depth (meter)	Max draught * (meter)	Max ship length (meter)	Course	Hoose	Tug boat	Notes
Stockvik	195	6,7	6,2	150	204°-024°	4 and 6"	>120 + Bp	
Kubikenborg	153	10,8	10,3	185	319°-139°			
Vindskärs- varv/ Sundsvall Oil	100	12,0	10,4	200 (tankers)	261°-081°	2*10"	Port reg.	
Cementa/ Moakajen	15	7,1	6,5	124	120°-300°			Quay length with dolphin =43 m
Ortviken Oil	165	11,2	10	160	054°-234°	8"		
Korsta Gas	62	11,8	10,5	200	175°-355°		Safety	Quay length with dolphin =92 m
Tunadal S #21, tank	210	12,3	11,3	250 (tankers)	326°-146°	2*8"	?	
Tunadal #21-#36	150	8,8	8,5	-	326°-146°			
Tunadal #36-#66	300	9,1	8,8	-	326°-146°			
Korstabäck quay	177	10,4	9,7	-	339°-159°			Fender 1,2 m
Tunadal Saw	100	6,8	6,5	-	347°-167°			
Östrand, new	90	8,1	7,4	135	115°-295°			
Söråker/ Delta Terminal AB	180	6,3	5,8	115	330°-150°		LOA>90 m	

The Swedish Maritime Administration provides pilotage and assistance in the navigation to vessels within Swedish territorial waters. Pilotage must be ordered five hours before the pilotage starts. The pilot order centres receive the pilot order and designate pilots to every assignment. On average, 33,000 pilotages are conducted each year.

