

# PASSAGE PLAN

## SIMPEVARP

*Not for navigation*

### OSKARSHAMN PILOTS

VHF channel 13

Pilot boat: VHF channel 13 and 16

Phone: +46-771-630 690

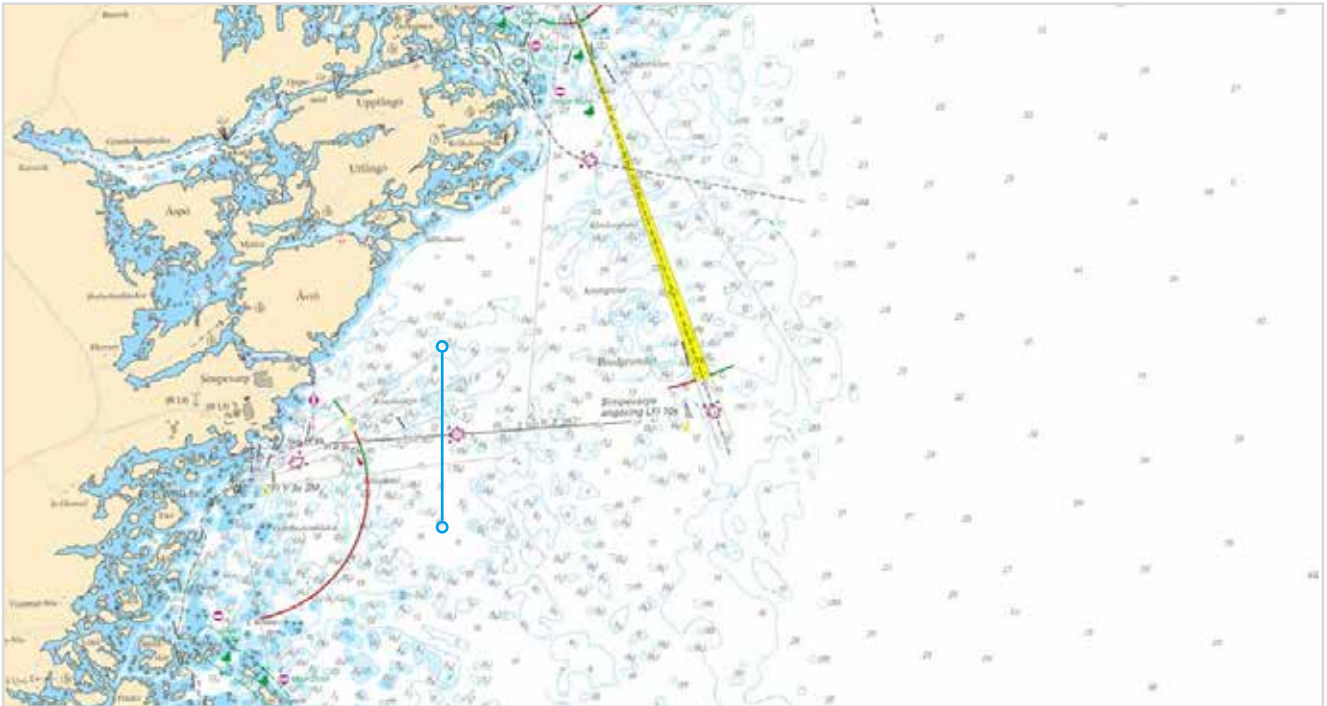
E-mail: southcoastpilot@sjofartsverket.se

- 24 hours before ETA pilot station, give preliminary ETA to Southcoast pilots.
- 5/1 hours before ETA pilot station; confirmation of ETA to Oskarshamn pilots.
- Order changes less than five hours in advance and cancellation less than three hours in advance will be charged.

[www.sjofartsverket.se](http://www.sjofartsverket.se)

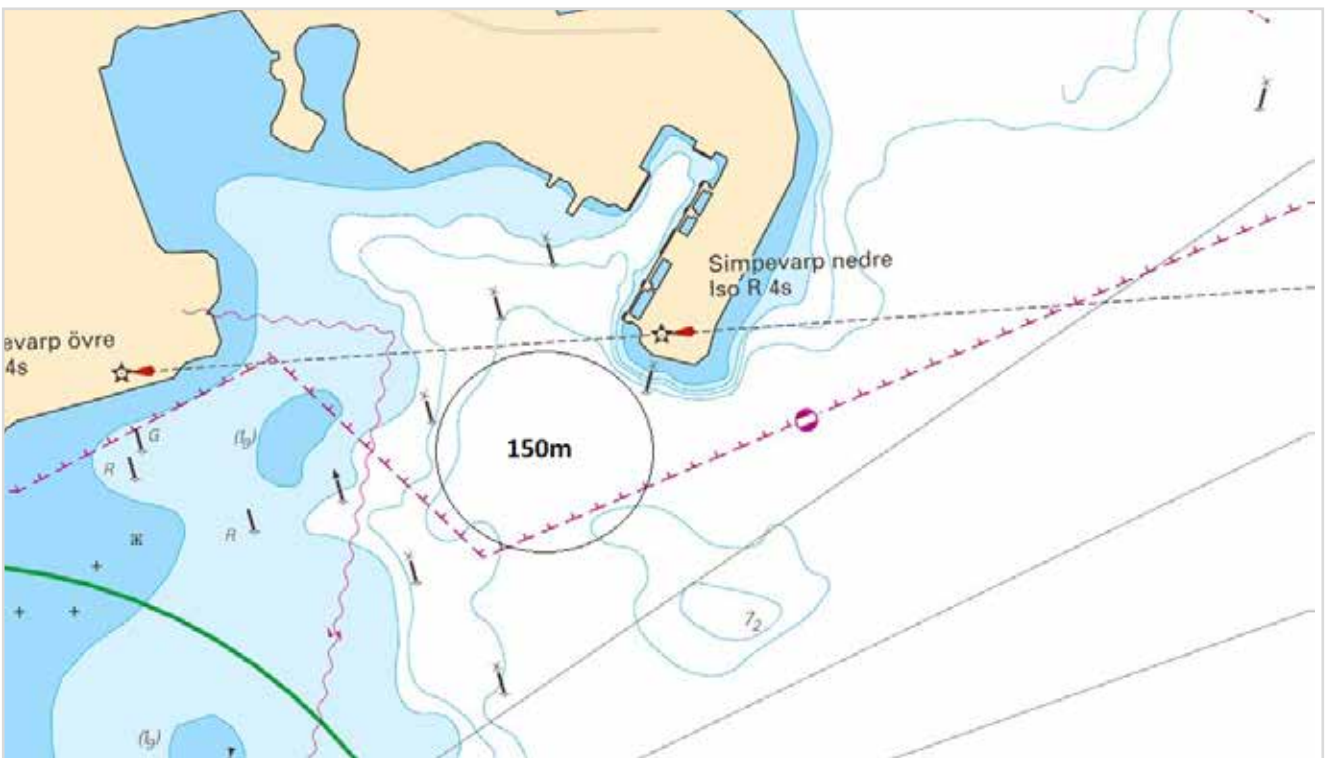
► Guidelines and restrictions for the area on SMA website

Chart 6231



► Guidelines and restrictions for the area on SMA website

Chart 6231



Quay	Draught	Depth	Length	Bearing	Notes
Simpevarp	5,5	6,0	105	212/032	Ro/ro

Distance pilotstation to berth: 2,8 nm

► Link to "Digitala färdplaner" (Route into Simpevarp in .rt3 format)