

PASSAGE PLAN

VÄSTERVIK

Not for navigation

VÄSTERVIK PILOTS

VHF CHANNEL 13

Pilot boat: VHF channel 13 and 16

Phone: +46-771-630 690

E-mail: southcoastpilot@sjofartsverket.se

- 24 hours before ETA pilot station, give preliminary ETA to Southcoast pilots.
- 5 hours before ETA pilot station; confirmation of ETA to Västervik pilots.
- Order changes less than five hours in advance and cancellation less than three hours in advance will be charged.

www.sjofartsverket.se



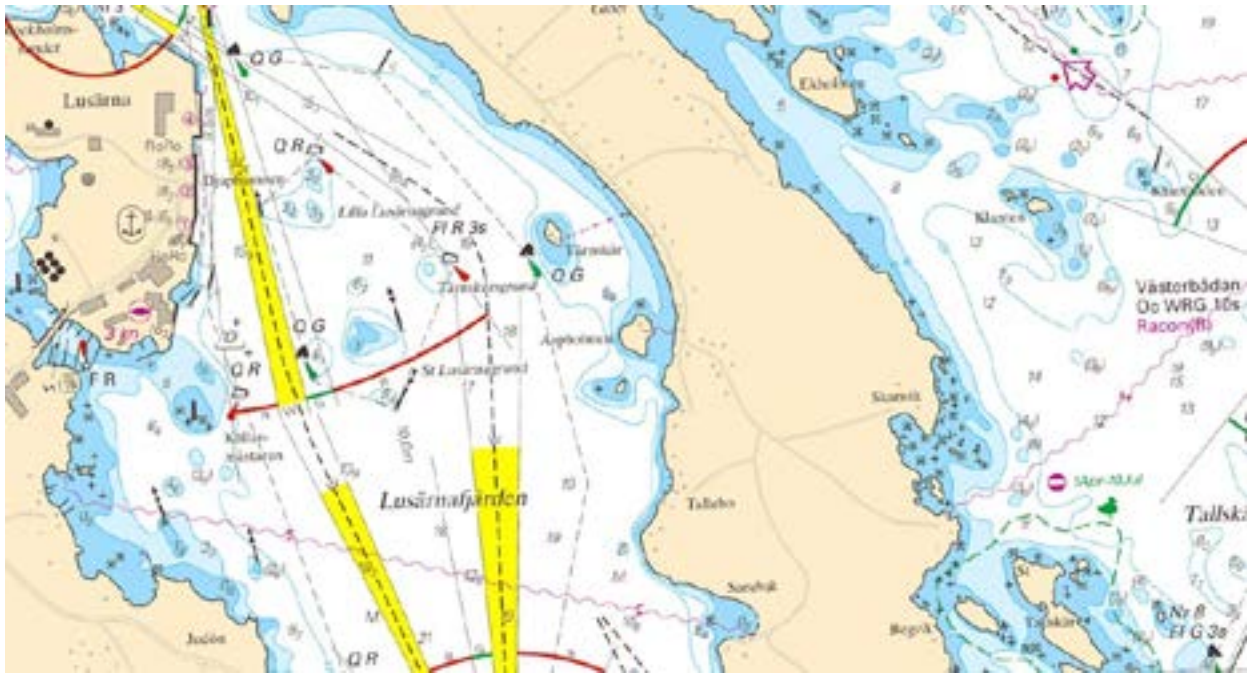
SWEDISH MARITIME
ADMINISTRATION

Photo: Västerviks Logistik & Industri AB

► Guidelines and restrictions for the area on SMA website



► Guidelines and restrictions for the area on SMA website



| Jetty | Draught | Depth | Length | Bearing | Notes |
|------------------|---------|---------|--------|---------|--------------------------------------|
| No. 1 | 5,6-6,0 | 6,1-6,5 | 100 | 014/194 | Roro 18m |
| No. 2 | 7,8 | 8,3 | 100 | 001/181 | |
| No. 3 | 8,0 | 8,5 | 100 | 001/181 | Hoose conn. 3 * 8" Roro 20 m wide |
| No. 4 | 9,0 | 9,5 | 150 | 000/180 | |
| Blockholmssundet | 5,1 | 5,6 | | | |
| Fish berth | 5,8 | 6,3 | 90 | 009/189 | |

Distance pilotstation to berth: 6,5nm

► Link to "Digitala färdplaner" (Route into Västervik in .rt3 format)