

PASSAGE PLAN

Örnsköldsvik PILOTS

VHF Channel: 11

Pilot boat. VHF ch 11 + 16

E-Mail: northcoastpilot@sjofartsverket.se

Phone: +46-(0)771-630 620

24 hours before ETA pilotstation – Give preliminary ETA to Northcoast Pilots.

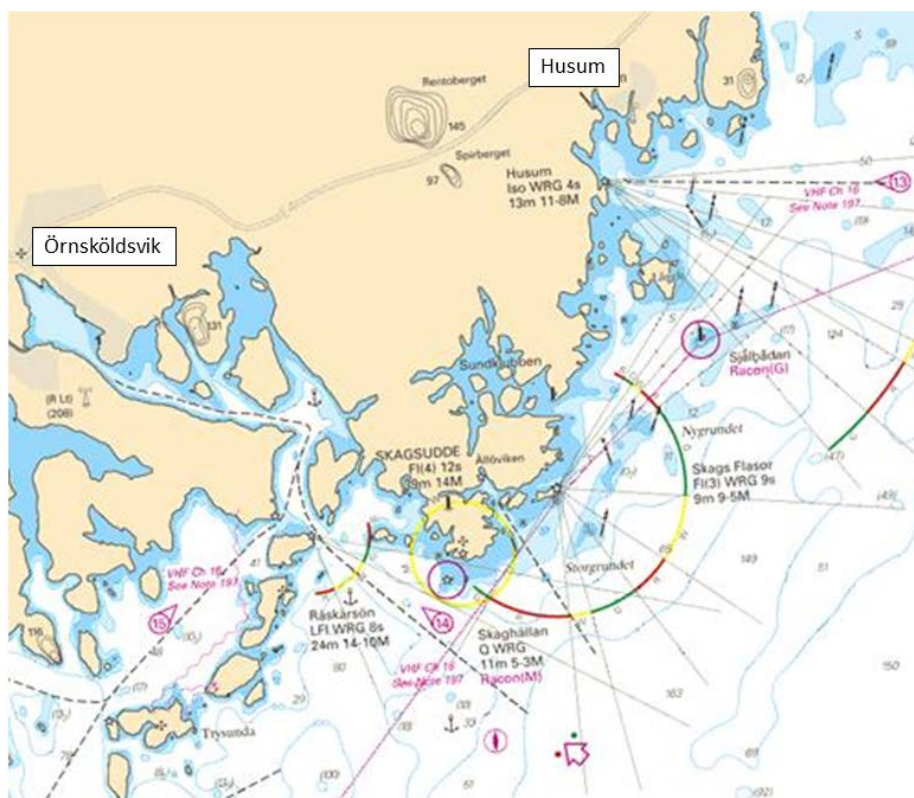
5/1 hours before ETA pilotstation – Confirmation of ETA to Skagsudde pilots.

Order changes less than five hours in advance and cancellation less than three hours in advance will be charged.

Örnsköldsvik and Husum

Link to SMA website with guidelines and restrictions for the area

<http://www.sjofartsverket.se/en/Maritime-services/Pilotage/Pilot-Areas/Lulea-Pilot-Area/Standards-Procedures/Ornskoldsvik-Pilot-Station/>



Örnsköldsvik

Distance from Skag pilot boarding position to Örnsköldsvik: 11 Nm



Husum

There are three routes to enter Husum harbor from Skag Pilot boarding position:

	<u>Route name</u>	<u>Max Draft in fairway</u>	<u>Distance</u>
1	Outer route	10.5 meter	17 Nm
2	Mid route	7 meter	13 Nm
3	Inner route (Granholmsund)	4.5 meter (only daytime)	11 Nm