

PASSAGE PLAN

VARBERG

Not for navigation

Version 2016

VARBERG PILOT

VHF Channel: 19
Pilot boat: VHF 19 and 16
Phone: +46-771-63 06 80
E-Mail: southcoastpilot@sjofartsverket.se
[www.sjofartsverket.se/en/Maritime-services/Pilotage/
Pilot-Areas/South-Coast-Maritime-Traffic-Area/](http://www.sjofartsverket.se/en/Maritime-services/Pilotage/Pilot-Areas/South-Coast-Maritime-Traffic-Area/)

DEEP SEA PILOT

Phone: +46-771-63 06 80
E-Mail: southcoastpilot@sjofartsverket.se
www.deepseapilotage.se

- 24 hours before ETA pilot station, give preliminary ETA to Southcoast pilots.
- 5 hours before ETA pilot station, confirmation of ETA to Varberg pilots.
- 1 hour before ETA pilot station, confirmation of ETA to Varberg pilots.

www.sjofartsverket.se



SWEDISH MARITIME
ADMINISTRATION

Date

Pilot (conning)

Pilot (co)

Name of berth

Max draught

LOA

Breadth

Propulsion

Thruster(s)

Rudder

Maneuvering characteristics

Defects

Tugboat (1) name and position

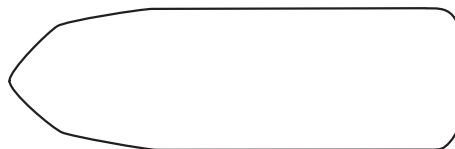
Tugboat (2) name and position

VHF working channel

Wind

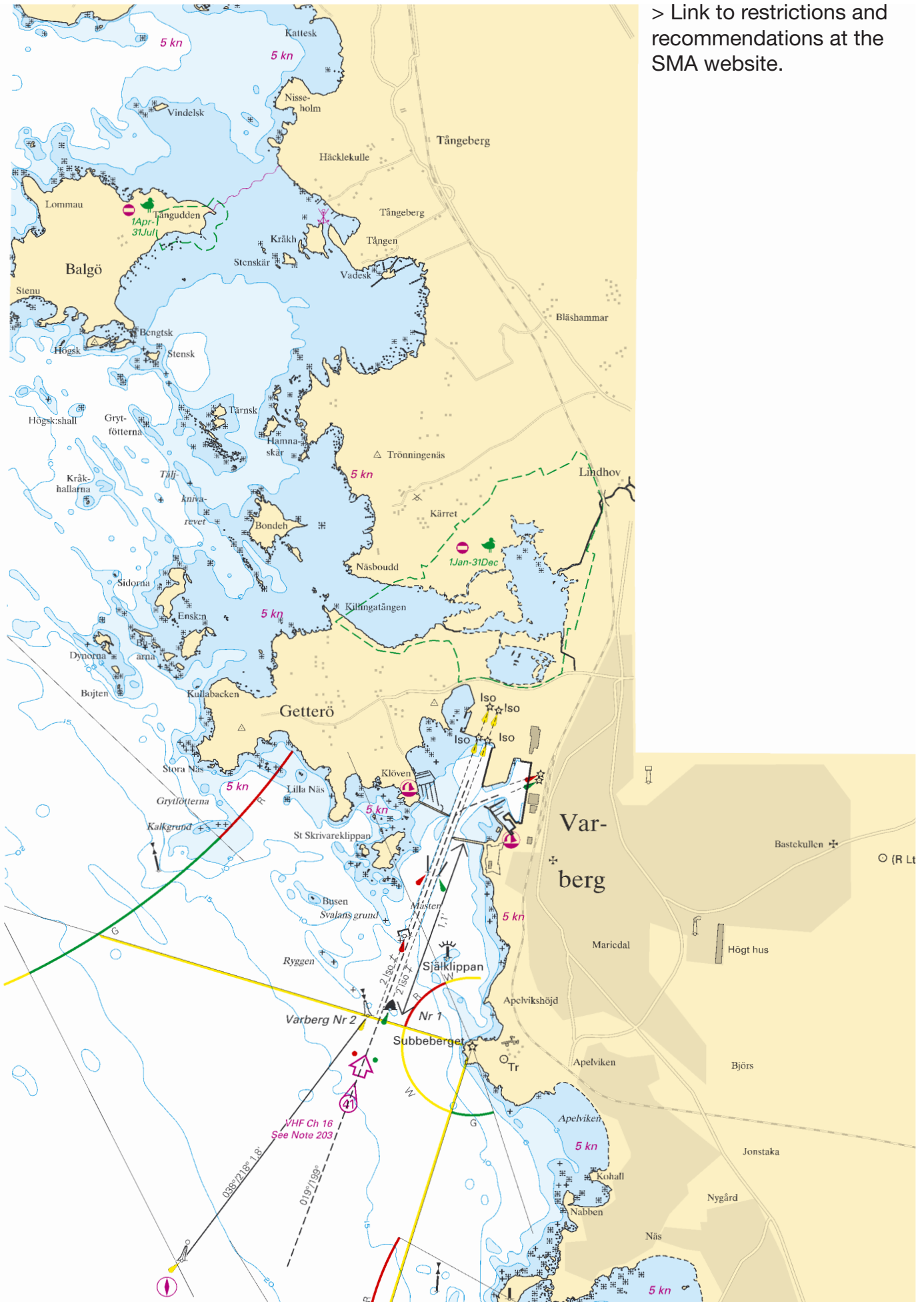
Current

Water level

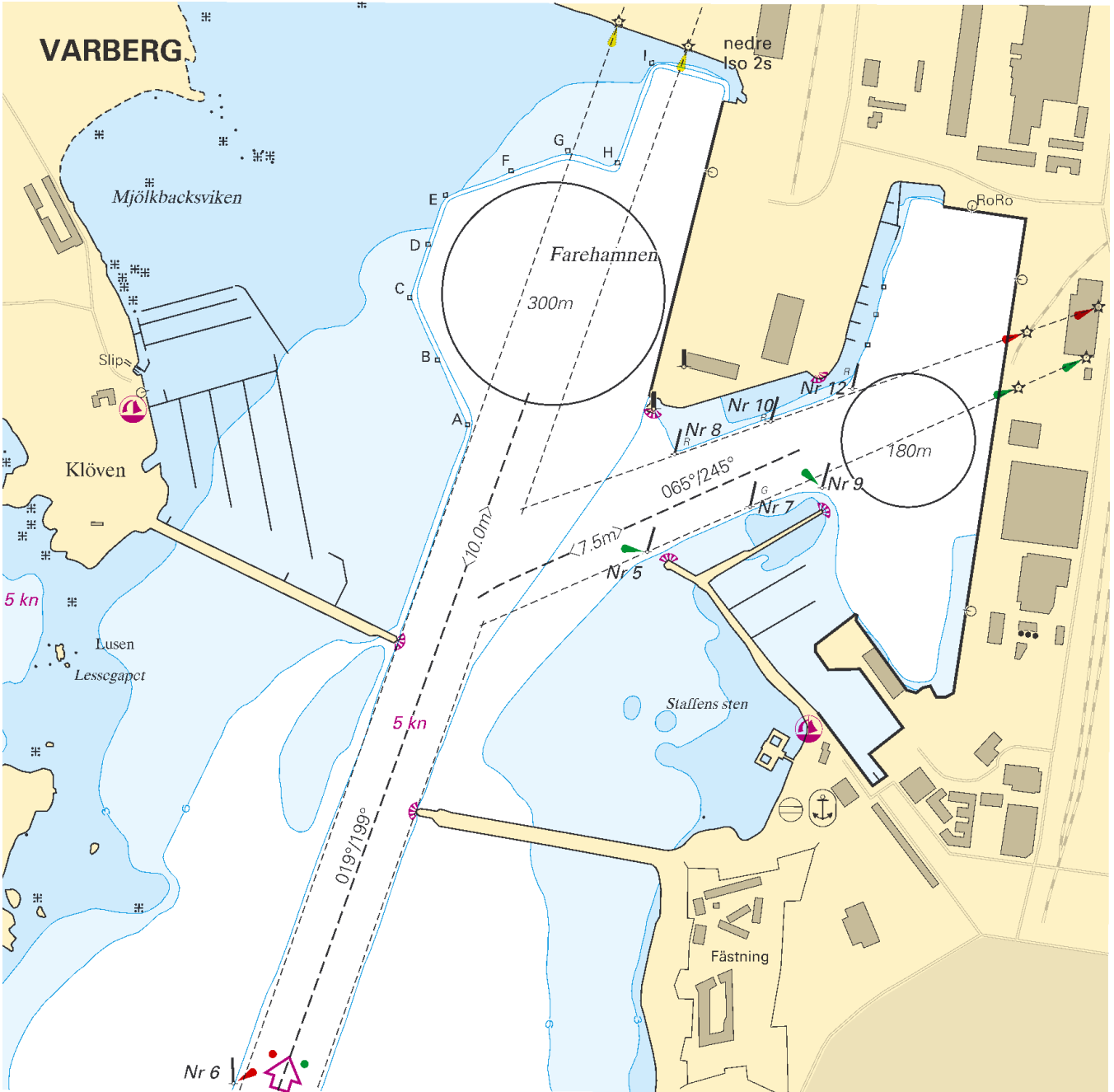


If any doubt - please challenge your pilot directly!

Varberg overview



> Link to restrictions and recommendations at the SMA website.



Tugboat arrangements for the ports of Halland

哈兰港口拖船安排。

Position for Crew/ABs for throwing of heaving line to Tug boat
此位置是船员/船级社为拖船抛撇缆绳的位置

Prepare heaving line to tug boat from fwd center lead
从船首中部给拖船准备撇缆绳
Please arrange before pilot arrival
请在领航员到来之前安排

Inform pilot of bollard SWL
告知领航员关于系缆桩的安全载重负荷