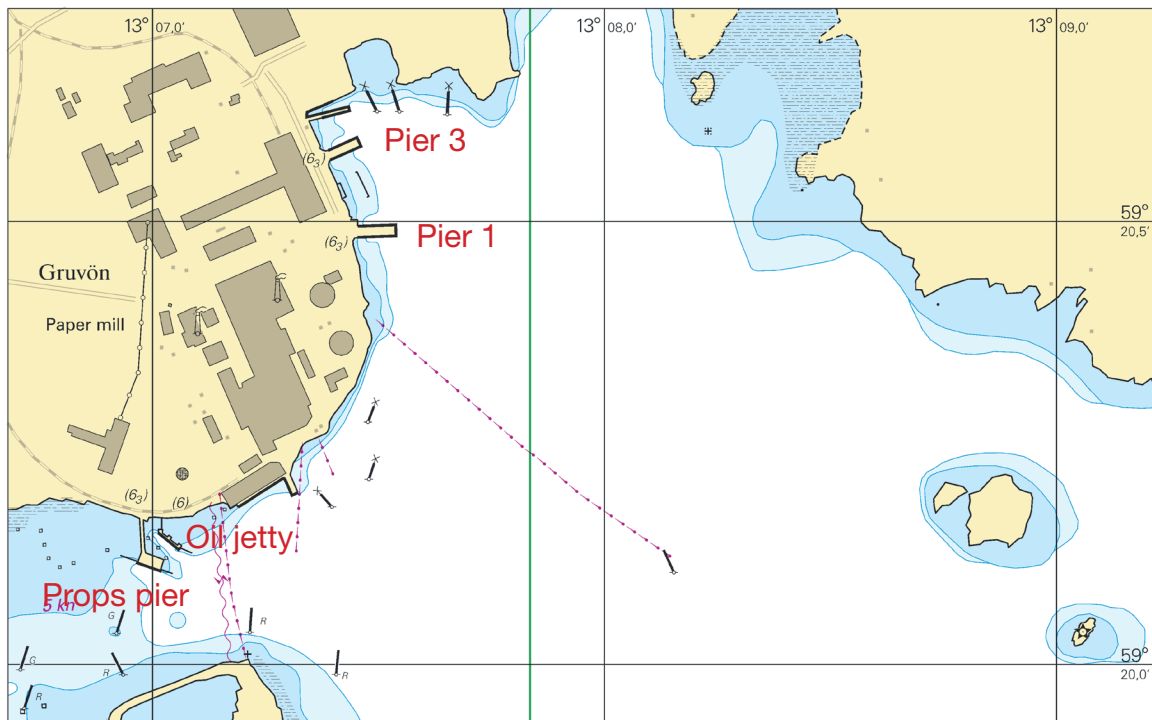


# PASSAGE PLAN GRUVÖN

Not for navigation



## Information

Pier 3 about 80 meters long. 5,40 m until 6 meters from shore

Pier 1 about 80 meters long.

Props Pier about 50 meters. Dolphins for mooring 115 meters apart.

Oil jetty about 60 meters. Dolphins for mooring available.

## Anchoring

About 0,7 NM east of Önsnässkäret



PHOTO: BILLERUDKORSNÄS

2016-03-04 version 1.0

#### **Agent**

Bror Andrén AB, Gruvön  
Storjohanns väg 4, 664 28 Grums  
Tel: +46 (0)555 10 666  
Tel: +46 (0)54 10 21 15 (24hrs)  
Fax: +46 (0)555 10 666  
mail@brorandren.se (24hrs) or  
gruvon.brorandren@telia.com

#### **Boatman**

Boatman compulsory November 1 to April 30.  
At daytime call agent for boatman, outside office  
hours call +46 (0)707520630 or by agents advice.

#### **Security Gruvön**

Telephone: +46 0555 411 80 or +46 0555 410 90  
(2h before arrival)  
Transport from berth to gate : +46 0555 410 91.

#### **Other info**

Supermarkets, train to Karlstad, Göteborg, Oslo and  
Stockholm.  
Hospital and airport in Karlstad (20 min by car).  
Garbage pick-up and disposal sludge available.  
No freshwater on any berth.