

# ICEBREAKER ALE

Call sign SBPQ  
IMO 734 7639  
MMSI 265 348 000  
Ice class 1A S Ice breaker

## Main dimensions

Length o.a 48.70 m  
Beam 13.00 m  
Draught 5.40 m  
Air draught 22.00 m  
Displacement 1,540 t



## Machinery

Total power 4,750 hp  
Main engines 4 x Wärtsilä 824 TS each 1,258 hp

### Main propeller

Aft 2 x Strömberg GTCUL 655 B3 each 1,725 kW  
Rudder 2 pcs

Speed in open water 12 kts - approx 8,4 m<sup>3</sup> MGO/24 hours  
Normal seaspeed 8 kts - approx 3,6 m<sup>3</sup> MGO/24 hours

Ice breaking capability of 0.6 m level ice at 3 knots

### Auxiliary engines and generators

Diesel generator 1 x Volvo Penta D7 139 kW  
2 x Volvo Penta D9 each 239 kW  
Supply system 240/380 VAC

### Air bubble system

The ice breaker is equipped with a system for producing air bubbles along the ship's hull, reducing the friction between the ship's hull and the ice.

Ale is designed as an escort icebreaker, purpose built to operate in Lake Vänern. It's beam and draft are adjusted to the locks in Trollhätte Canal. Ale has over the last few years been upgraded both materially and technically.

## Vessel details

Bollard pull  
Continuous forward 51 tonnes.

Towing equipment  
Norwinch towing winch, 20 tonnes.

Life saving equipment  
MOB 1 x Norvik 470  
Liferaft 2 x Viking DK, 12 persons each  
2 x Unitor TOB liferaft, 25 persons each

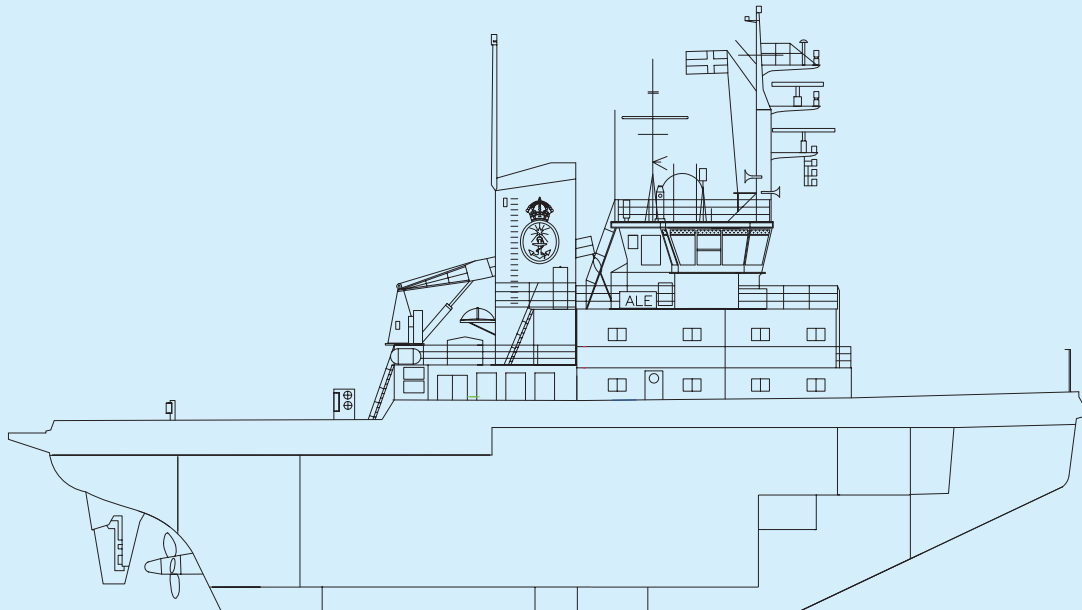
Accommodation  
Single cabin 12  
Other Sauna, gym, hospital and dayroom.

Navigational equipment  
GMDSS Sailor  
ARPA Selesmar Selux  
ECDIS Adveto  
Echo sounder Skipper  
Gyro compass Sperry  
AIS SAAB  
GPS Furuno

### Tank capacities

Fresh water 76 m<sup>3</sup>  
Diesel 316 m<sup>3</sup>  
Luboil 5 m<sup>3</sup>

Contact the vessel  
bridge@ale.sjofartsverket.se



Building yard OY Wärtsilä AB, Helsinki, Finland in year 1973